

Practical Framework for Clinicians to Address Health Equity and Social Vulnerability.

Colleen Galambos, PhD, FGSA, FAASWSW, ACSW, LCSW
Helen Bader Endowed Chair in Applied Gerontology



Objectives

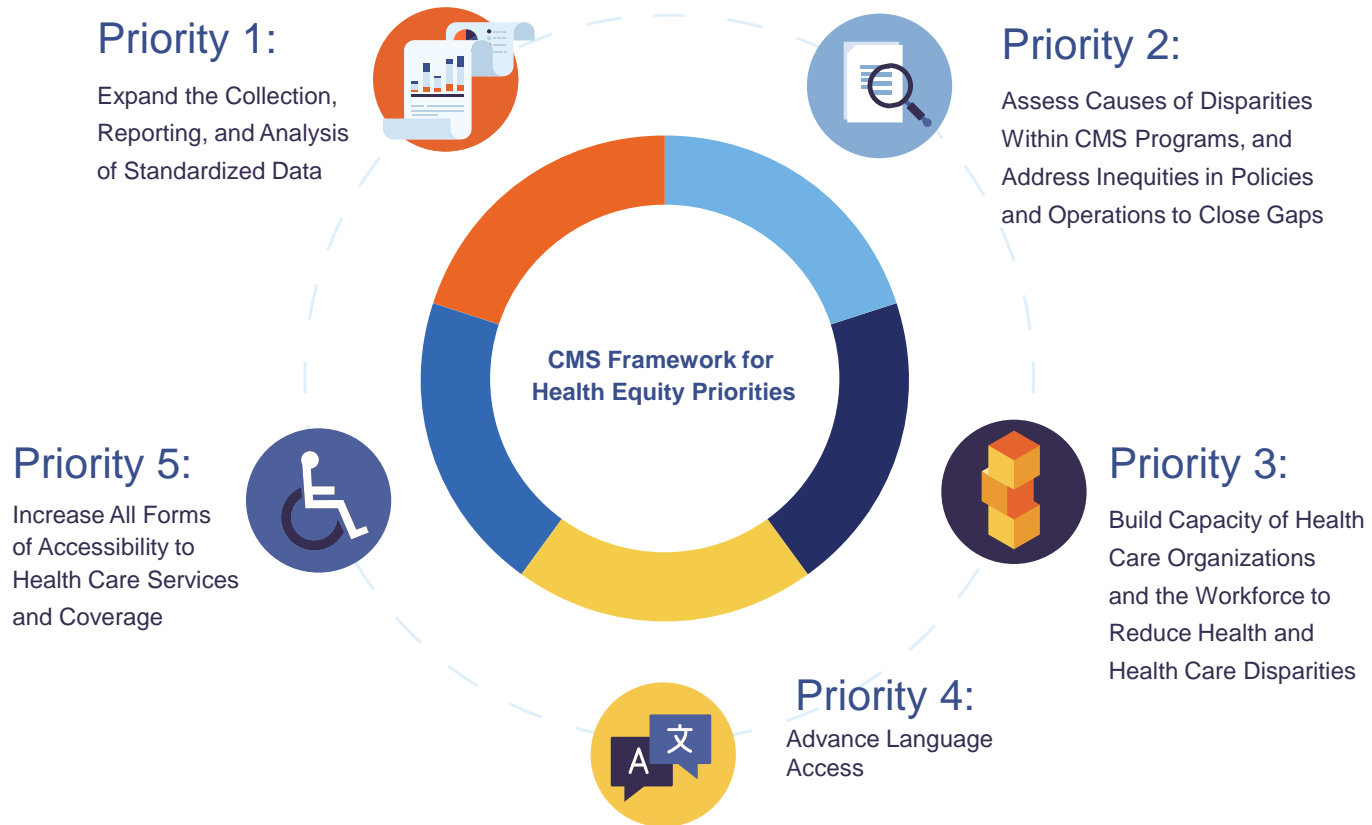
- Gain familiarity with the terms health equity/social determinants of health.
- Explore CMS Framework for Health Equity.
- Explore strategies to aid in the integration of social care to address social determinants of health.
- Obtain knowledge about practical tools that can be used to screen for social care needs.
- Obtain knowledge about resources that can be used to promote health system change

Social Determinants of Health

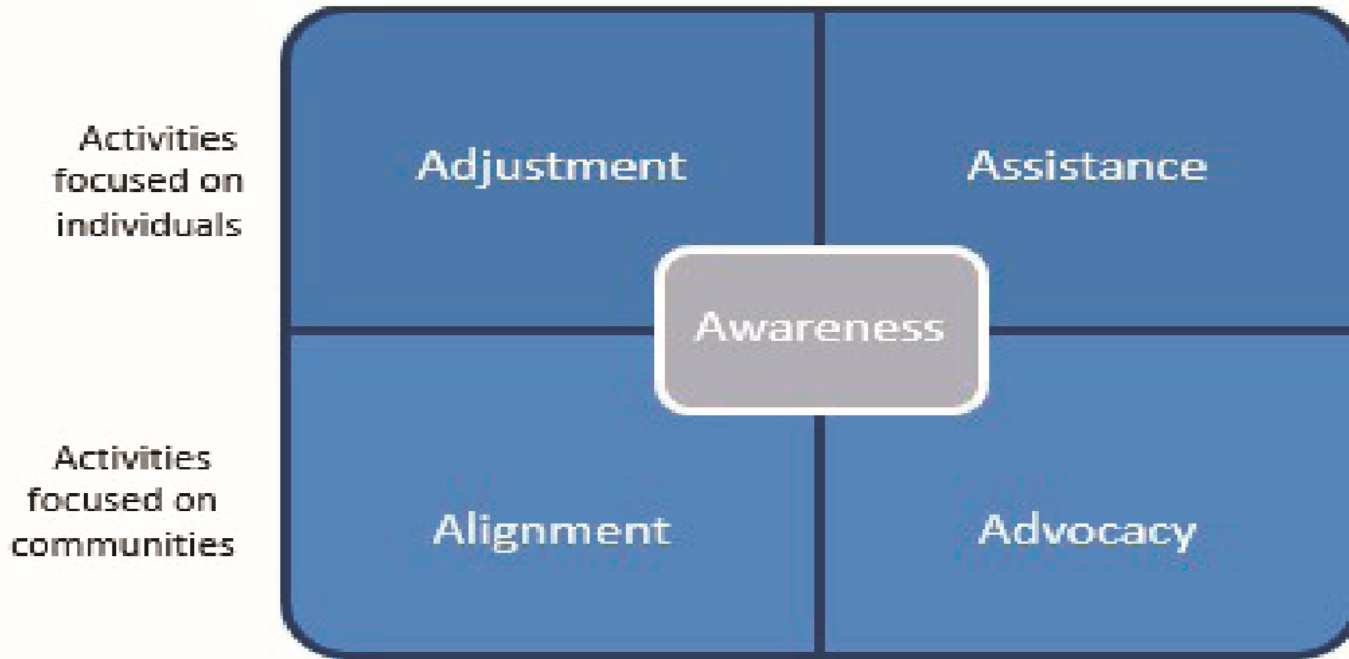


CMS Framework for Health Equity

<https://www.cms.gov/files/document/cms-framework-health-equity.pdf>



NASEM: Categories of Activities



Integrating Social Care Into the Delivery of Healthcare (2019) National Academies Press, p. 34.

NASEM: Strategies for Initiating Social Care Integration

Phase	Potential Challenges	Strategies to Address These Challenges
Initiating Social Care Integration	Leadership support	Obtain formal commitment from leaders
	Provider and staff buy-in	Identify and prepare champions
	Organizational culture	Engage staff in planning
	Logistics	Develop clear protocols
	Goals	Assess local needs and resources, identify barriers
	Strategy	Develop a formal implementation plan
	Structure	Revise professional roles and workflows
	Infrastructure	Adapt payments structures, technology, staffing, or partnerships

Integrating Social Care in the Delivery of Health Care (2019). National Academies Press, p. 140

Tools for Screening and Assessing

- WellRx Questionnaire – 11 item; yes/no responses
- PRAPARE – 17 items with 4 additional questions that are optional; forced choice responses with a prefer not to answer option
- CMS Accountable Health Communities (ACH) Health Related Social Needs (HRSN) Screening Tool – 10 core items with 16 additional supplemental questions; forced choice response.
- Your Current Life Situation (Short Form) – 9 items with 16 additional items that could be in the item bank; forced choice response.

Quality Improvement Models and Resources

- CAHPS – Consumer Assessment of Health Care Providers and Systems
- Plan Do Study Act Cycle Planning (PDSA)



- U.S. Preventative Services Task Force Methods for Screening Social Determinants of Health

Resources

Social Determinants of Health/ Health Equity General Resources:

<https://www.cdc.gov/publichealthgateway/sdoh/index.html#print>

<https://www.nationalacademies.org/our-work/integrating-social-needs-care-into-the-delivery-of-health-care-to-improve-the-nations-health>

<https://nap.nationalacademies.org/catalog/25663/social-isolation-and-loneliness-in-older-adults-opportunities-for-the>

Resources

Screening Tools:

<https://sirenetwork.ucsf.edu/tools-resources/resources/your-current-life-situation-survey>

<https://forms.loinc.org/93667-4>

<https://www.acpjournals.org/doi/full/10.7326/M20-0730?journalCode=aim>

<https://innovation.cms.gov/files/worksheets/ahcm-screeningtool.pdf>

[https://nursing.utexas.edu/sites/default/files/AMEN Health Leads Social Needs Screening Toolkit.pdf](https://nursing.utexas.edu/sites/default/files/AMEN_Health_Leads_Social_Needs_Screening_Toolkit.pdf)

<https://healthleadsusa.org/communications-center/resources/the-health-leads-screening-toolkit/>

[hops19-physician-form-sdoh \(2\).pdf](#)

Resources

Quality Improvement Tools:

<https://www.ahrq.gov/evidencenow/tools/pdsa-worksheet.html>

<https://www.acpjournals.org/doi/full/10.7326/M20-0730?journalCode=aim>

<https://www.ahrq.gov/sdoh/practice-improvement.html>

<https://www.ahrq.gov/cahps/quality-improvement/improvement-guide/improvement-guide.html>

References

AHRQ (2023) *Social Determinants of Health*. Retrieved: <https://www.ahrq.gov/sdoh/index.html>.

Cartier Y, Fichtenberg F, Gottlieb L. (2023) Screening tools comparison tables. Retrieved: <https://sirenetwork.ucsf.edu/tools-resources/resources/screening-tools-comparison-tables>

CMS (2023) *Framework for Health Equity*. Retrieved: <https://www.cms.gov/about-cms/agency-information/omh/health-equity-programs/cms-framework-for-health-equity>

De Saxe Zerden, L., Cadet, T.J., Galambos, C. & Jones, B. (2021). Social work's commitment and leadership to address social determinants of health and integrate social care into health care. *Journal of Health and Human Services Administration*, 43(3), 309-323. <https://doi.org/10.37808/jhhsa.43.3.5>.

Healthy People 2030 (2023). *Social Determinants of Health*. Retrieved: <https://health.gov/healthypeople/priority-areas/social-determinants-health>

LaForge K, Gold R, Cottrell E, Bunce AE, Proser M, Hollombe C, Dambrun K, Cohen DJ, Clark KD. *How 6 Organizations Developed Tools and Processes for Social Determinants of Health Screening in Primary Care: An Overview. J Ambul Care Manage.* 2018;41(1):2-14.

NASEM (2019). *Integrating Social Care into the Delivery of Health Care*. Washington, DC : The National Academies Press.

NASEM (2020). *Social Isolation and Loneliness in Older Adults: Opportunities for the Health Care System*. Washington, D.C. : The National Academies Press.

Page-Reeves J, Kaufman W, Bleecker M, et al. Addressing social determinants of health in a clinic setting: The WellRx pilot in Albuquerque, New Mexico. *J Am Board Fam Med.* 2016;29(3):414-8. doi: 10.3122/jabfm.2016.03.150272.

THANK YOU!!



Presenter Information



Colleen Galambos,
Ph.D., ACSW, LCSW,
FGSA, FAASWSW
Helen Bader
Endowed Chair in
Applied Gerontology
at the University of
Wisconsin-Milwaukee;
Adjunct Professor,
Medical College of
Wisconsin