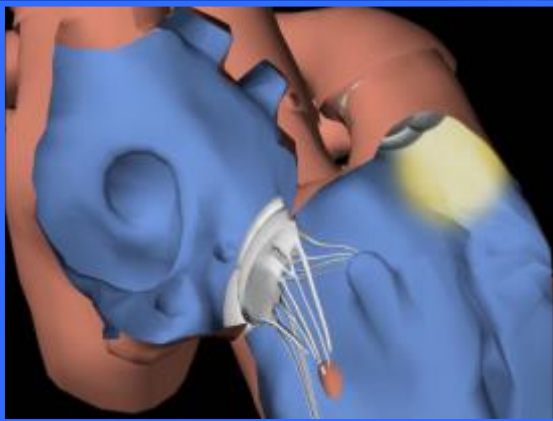




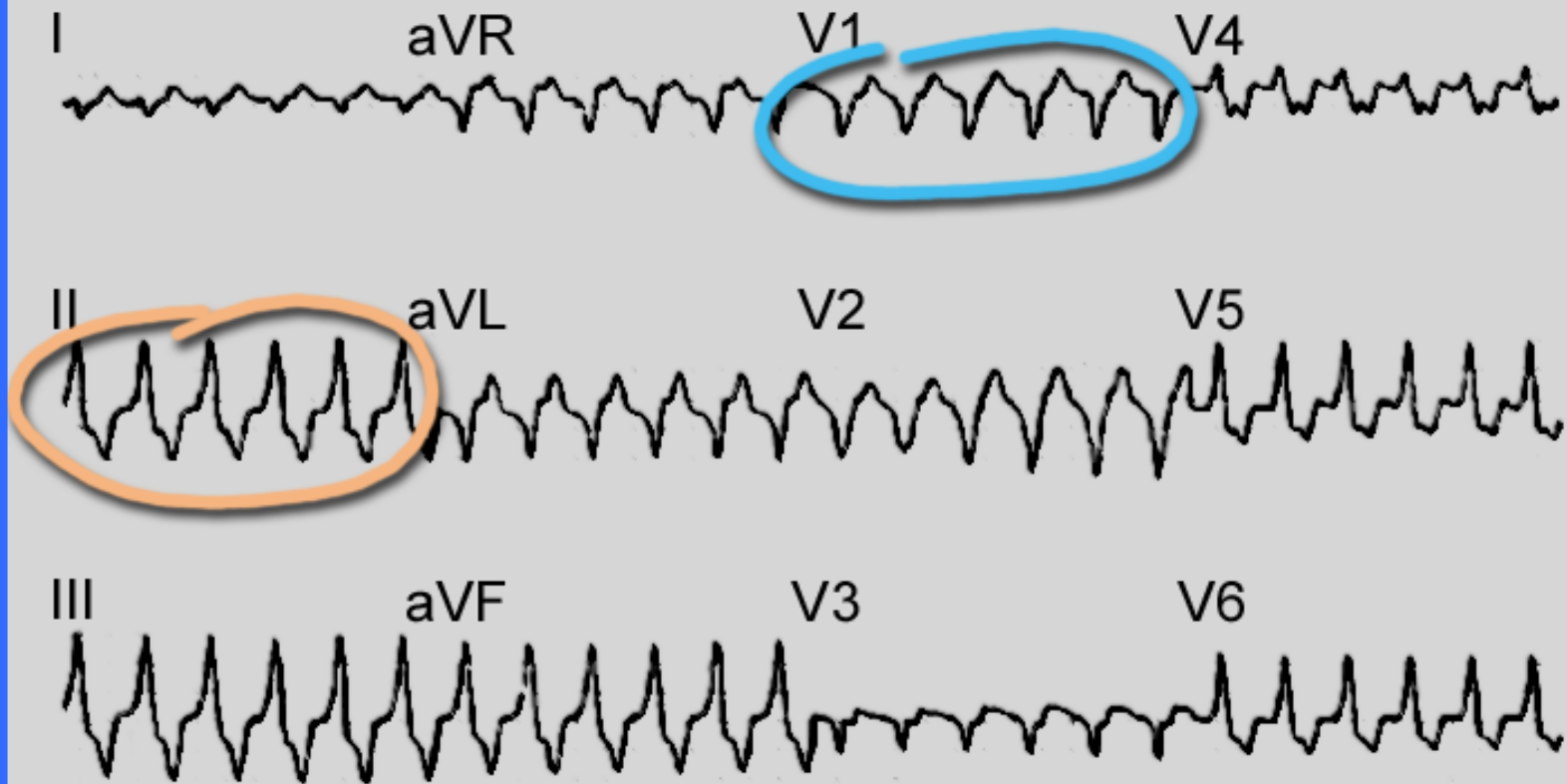
RV-LV and Epicardial Anatomy in VT

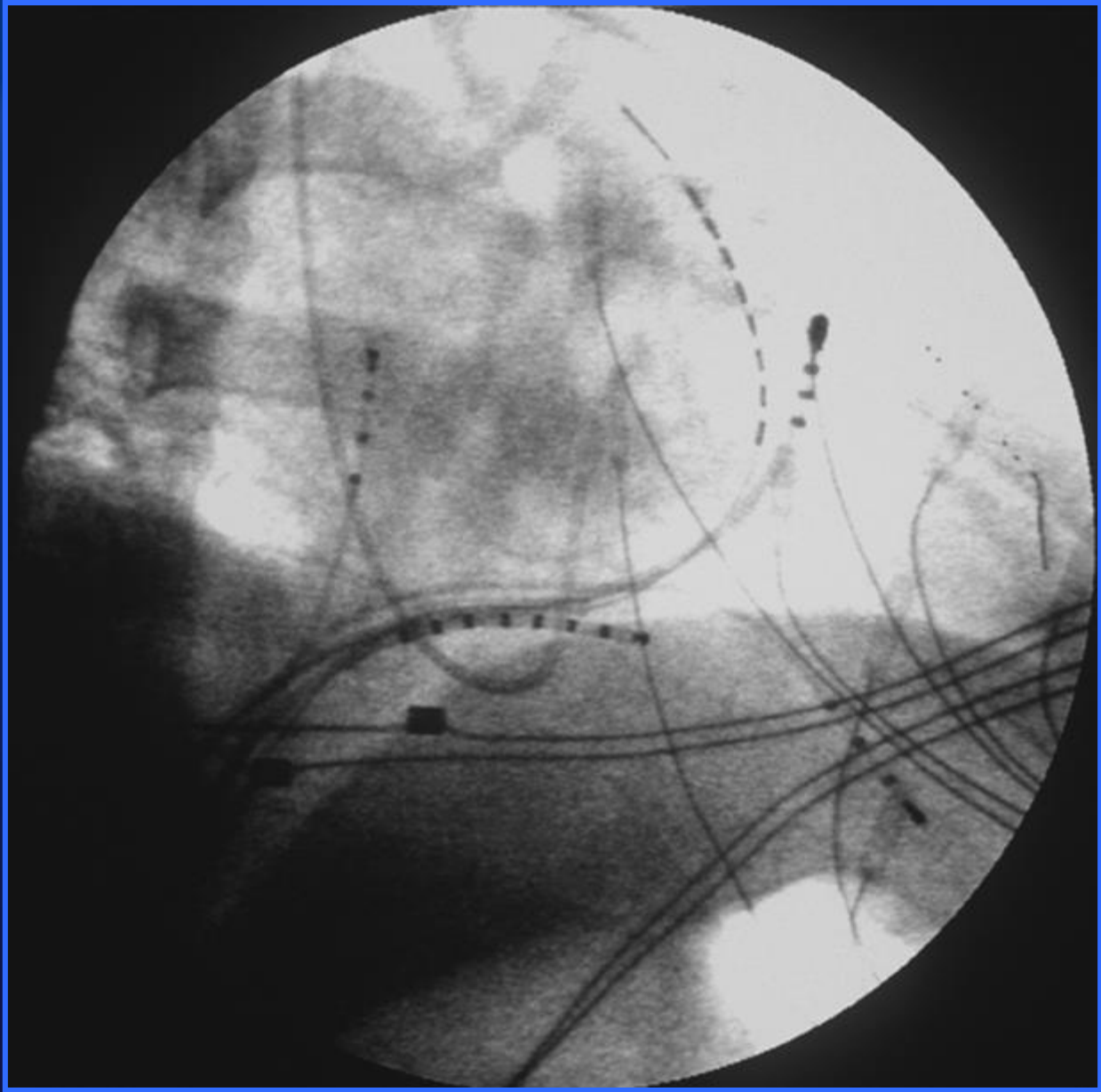


Samuel J. Asirvatham, M.D.
Mayo Clinic – Rochester
AF, VT, VF Summit – Chicago, Illinois
Friday, December 6, 2019: 7:50 to 8:15 a.m.

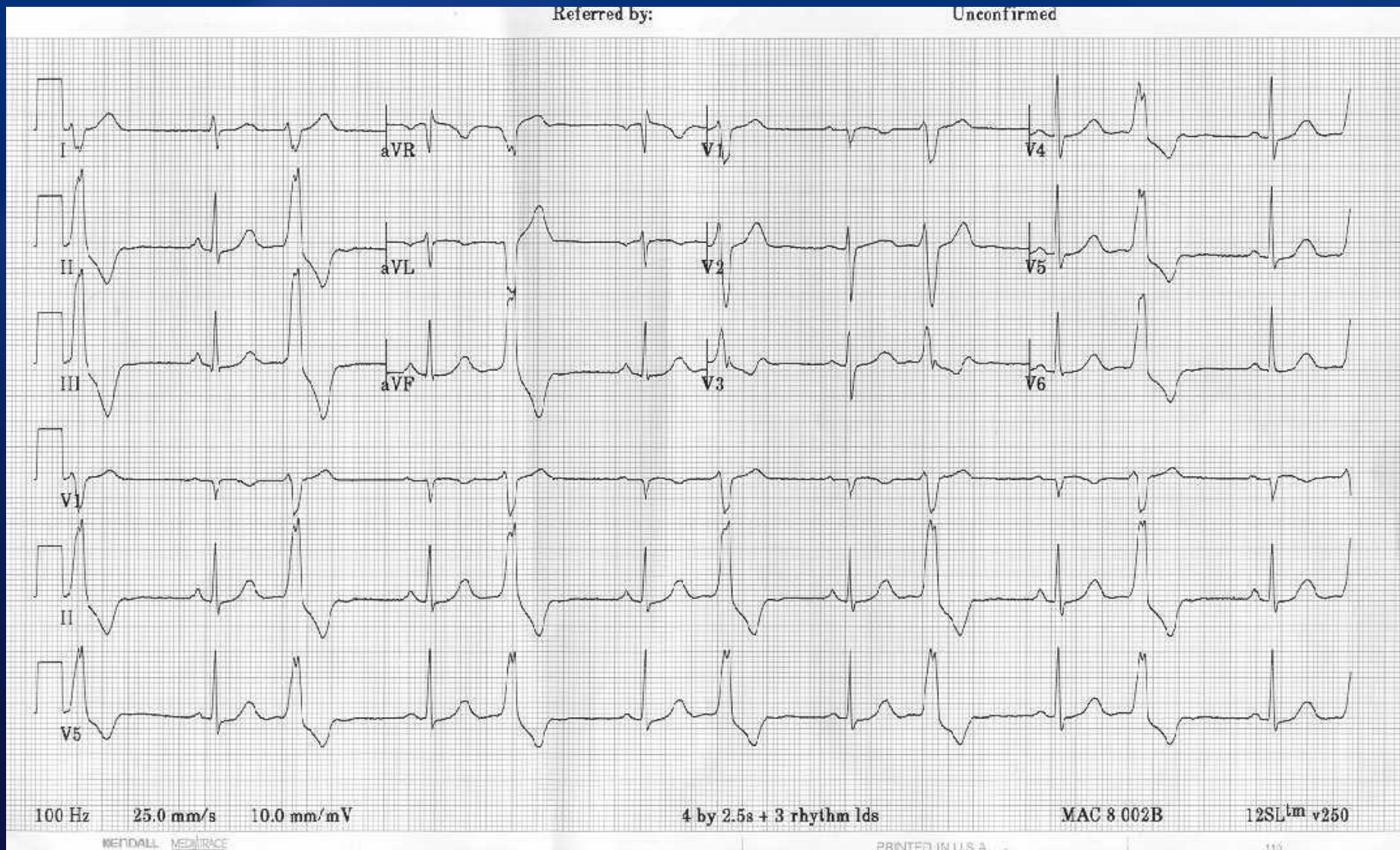


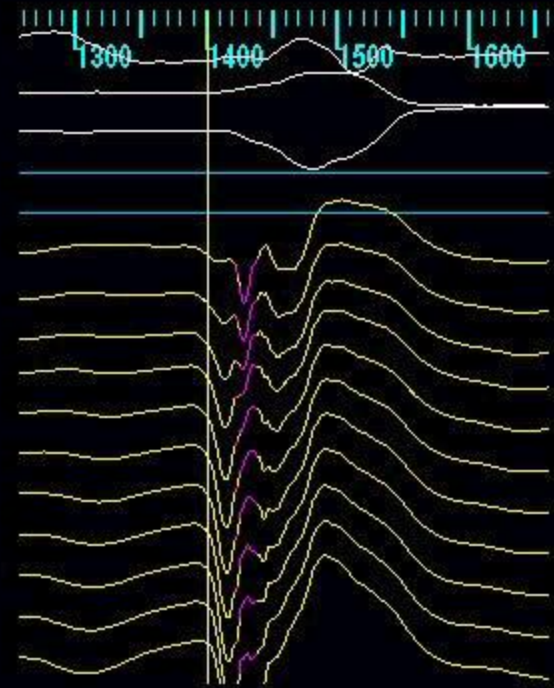
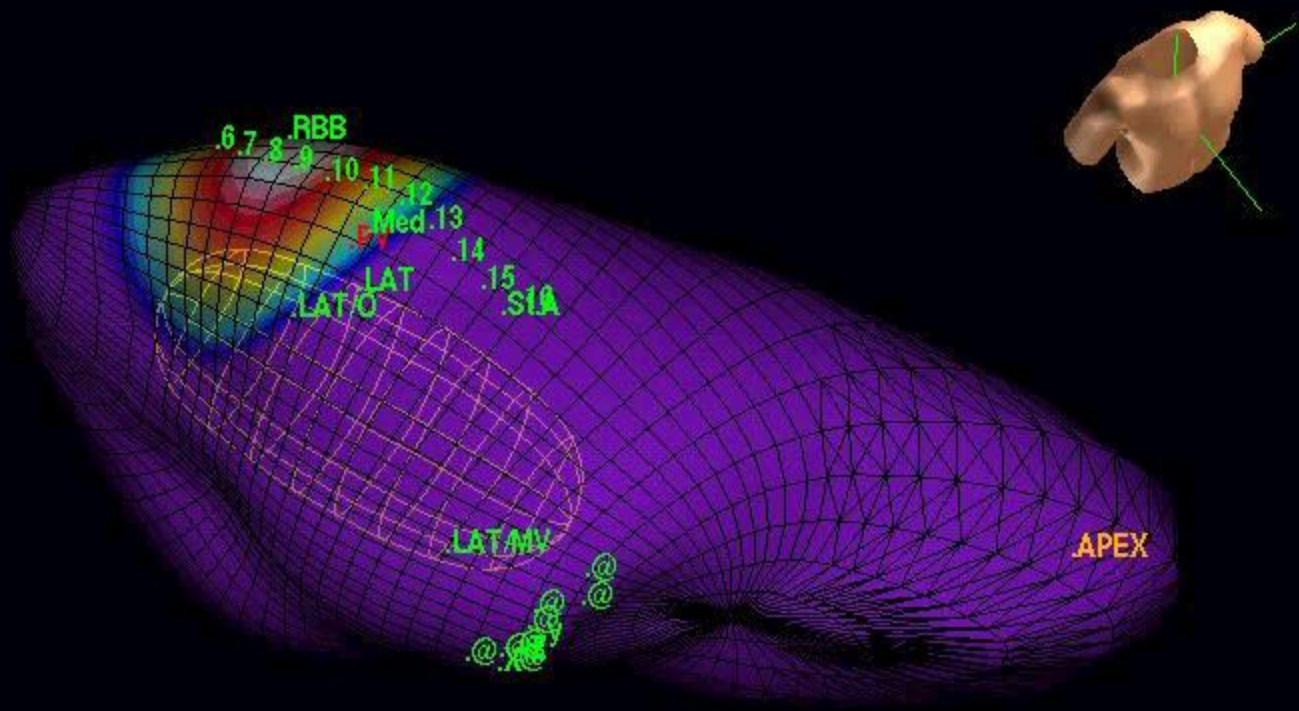
Right Ventricular Outflow Tract VT





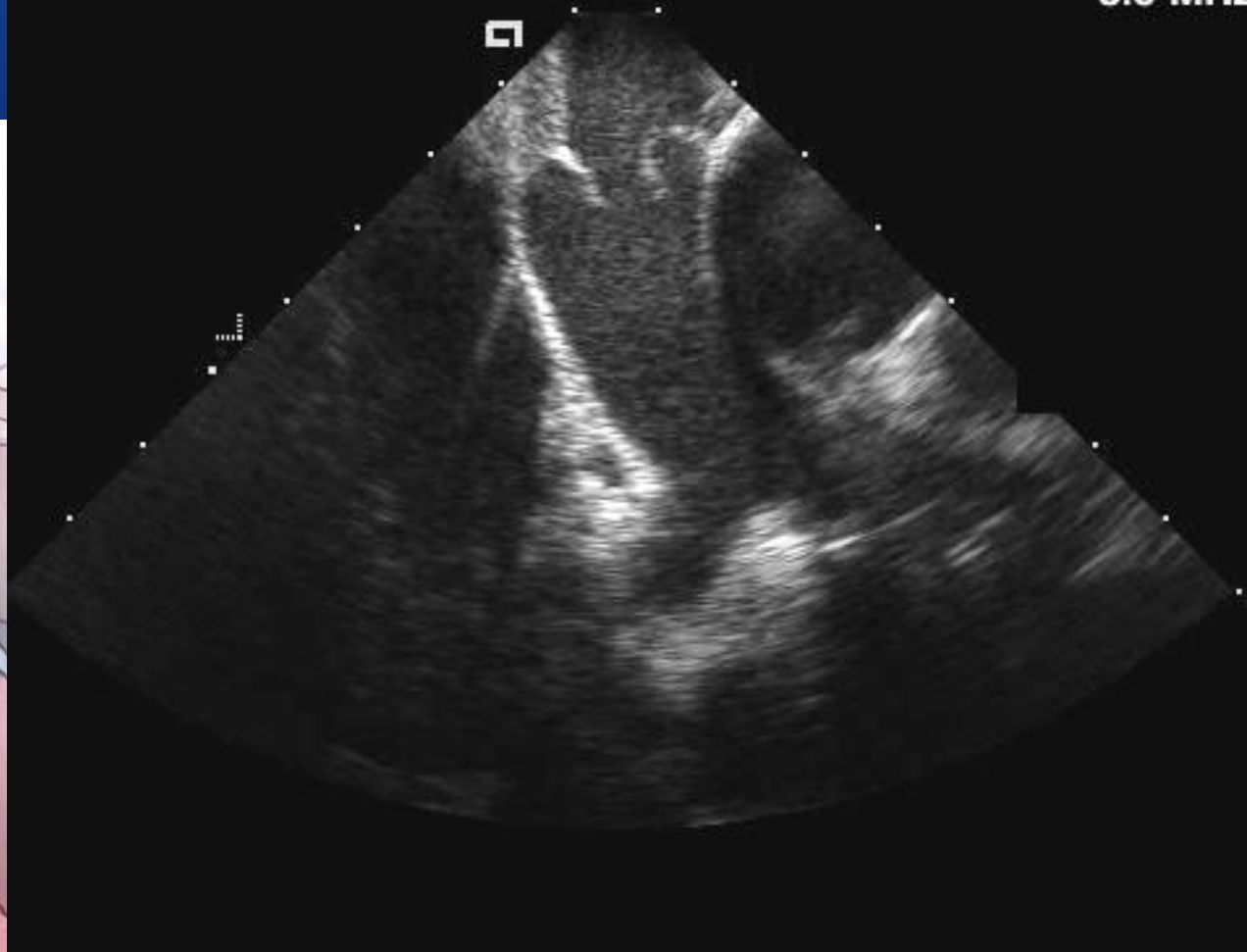
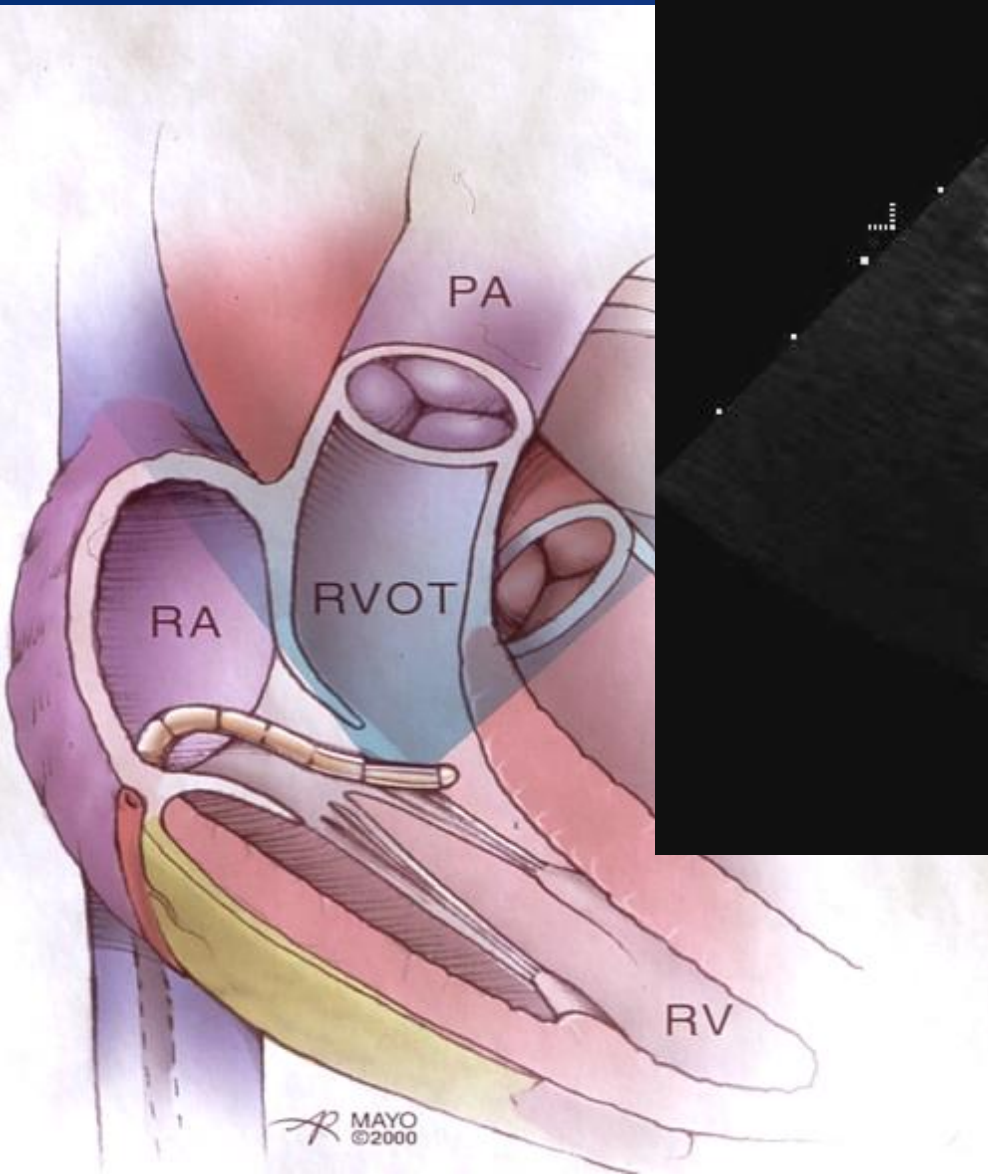
26 yrs female, 25,000 PVCs on Holter 3 failed ablations





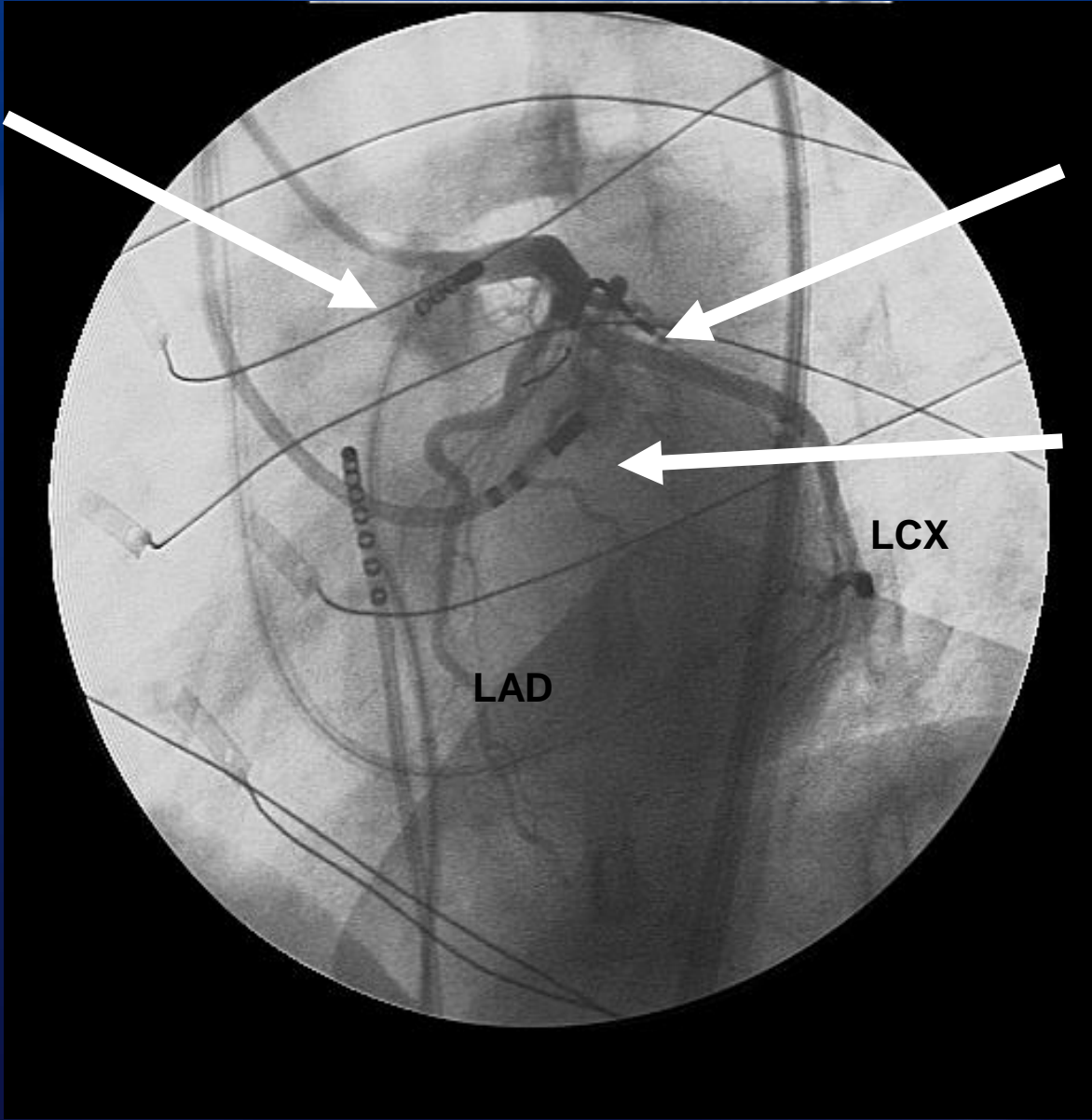


IC9V5
8.5 MHz





RVOT



Cardiac Vein

LVOT
retrograde
approach

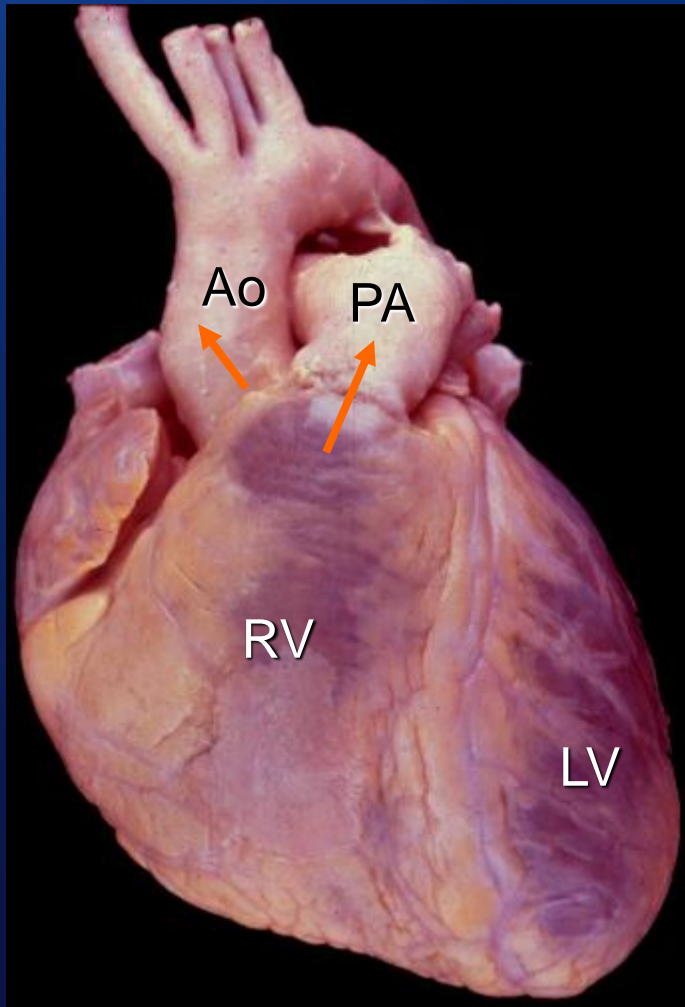
LCX

LAD

LAO

Normal Heart

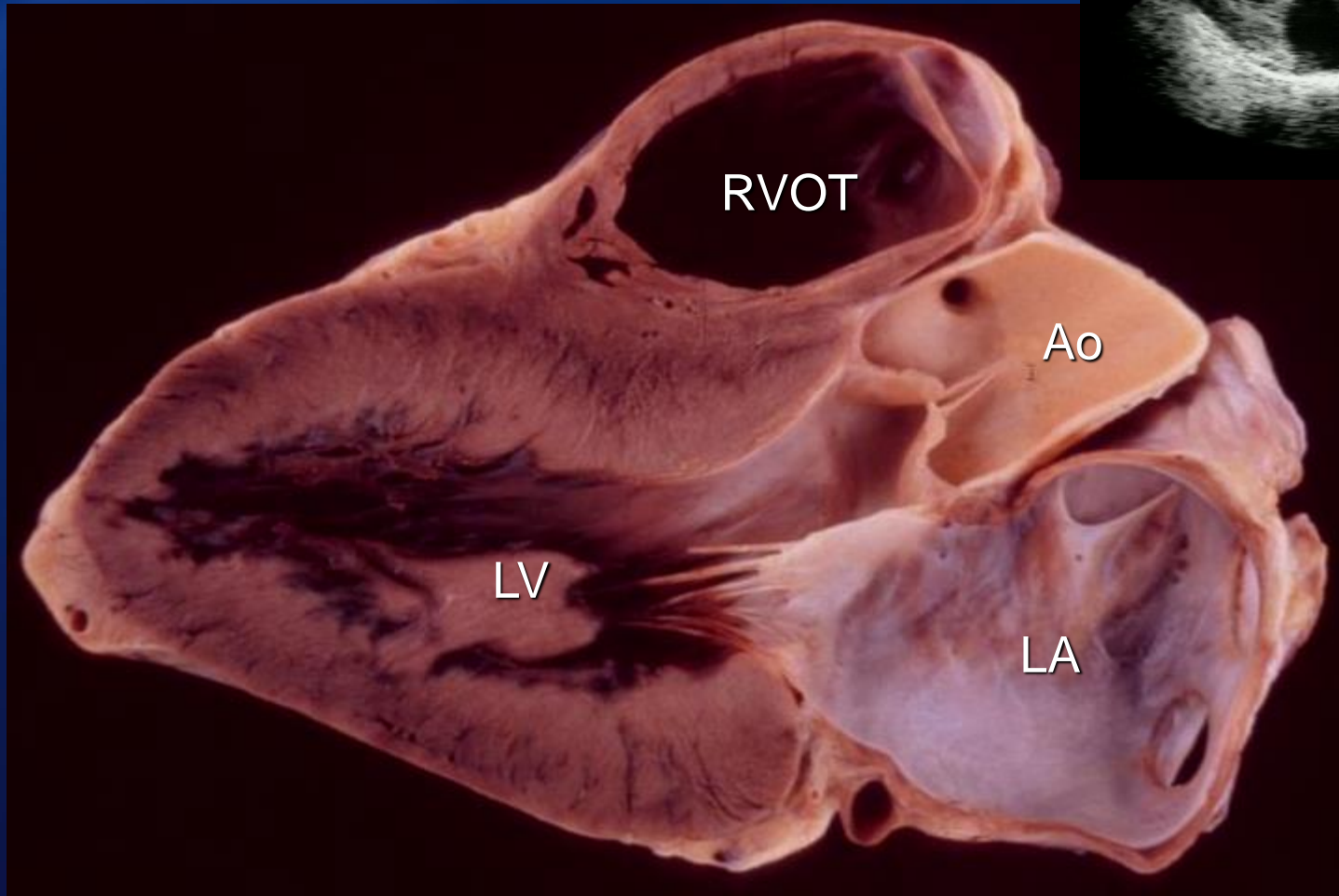
Direction of Great Arteries



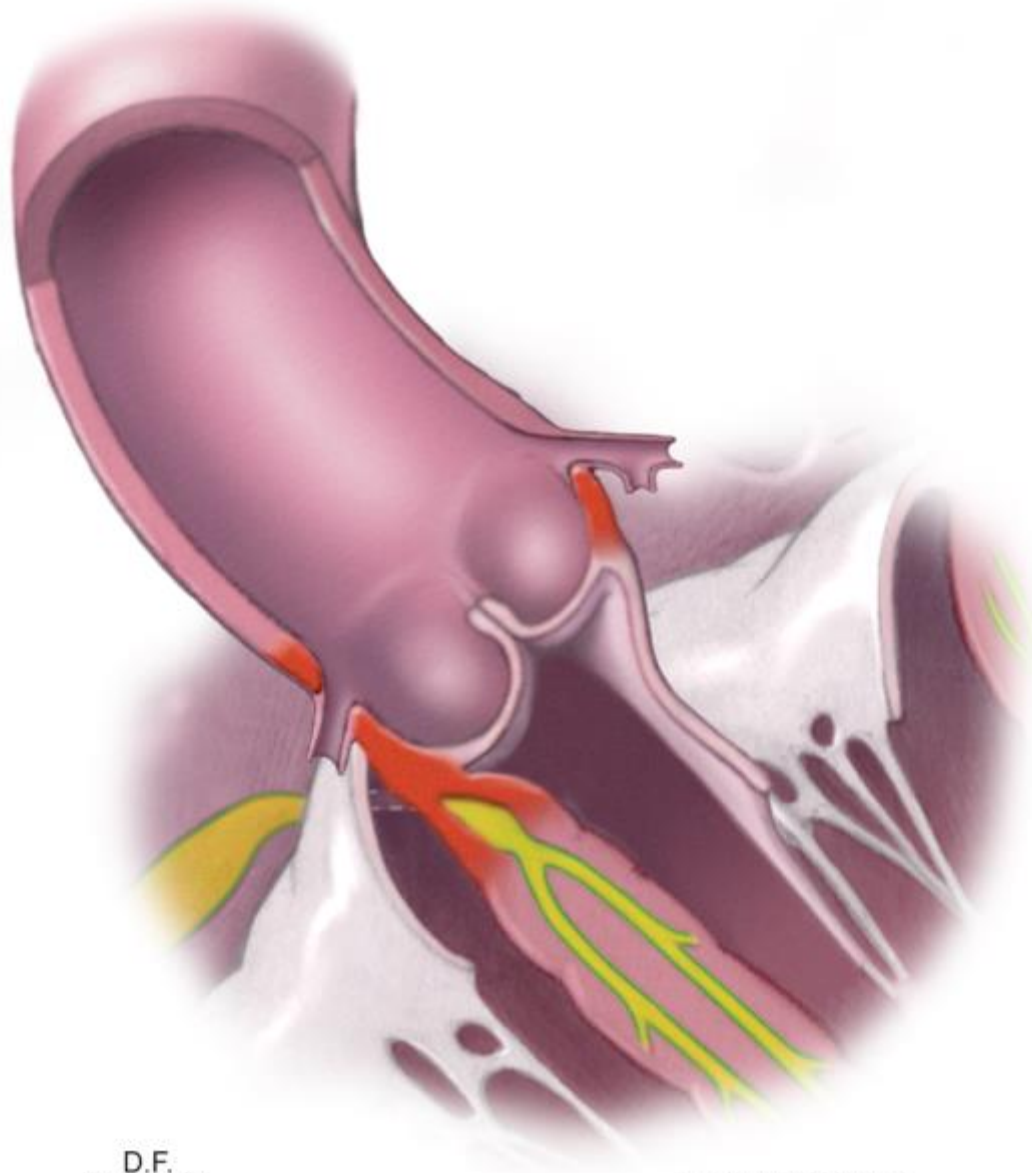
Anterior View

- **Pulmonary artery**
Anterior to aorta
To left shoulder
- **Ascending aorta**
Posterior to PA
To right shoulder
- **Aorta-PA angle**
60 to 90 degrees

Normal Heart Ventricles

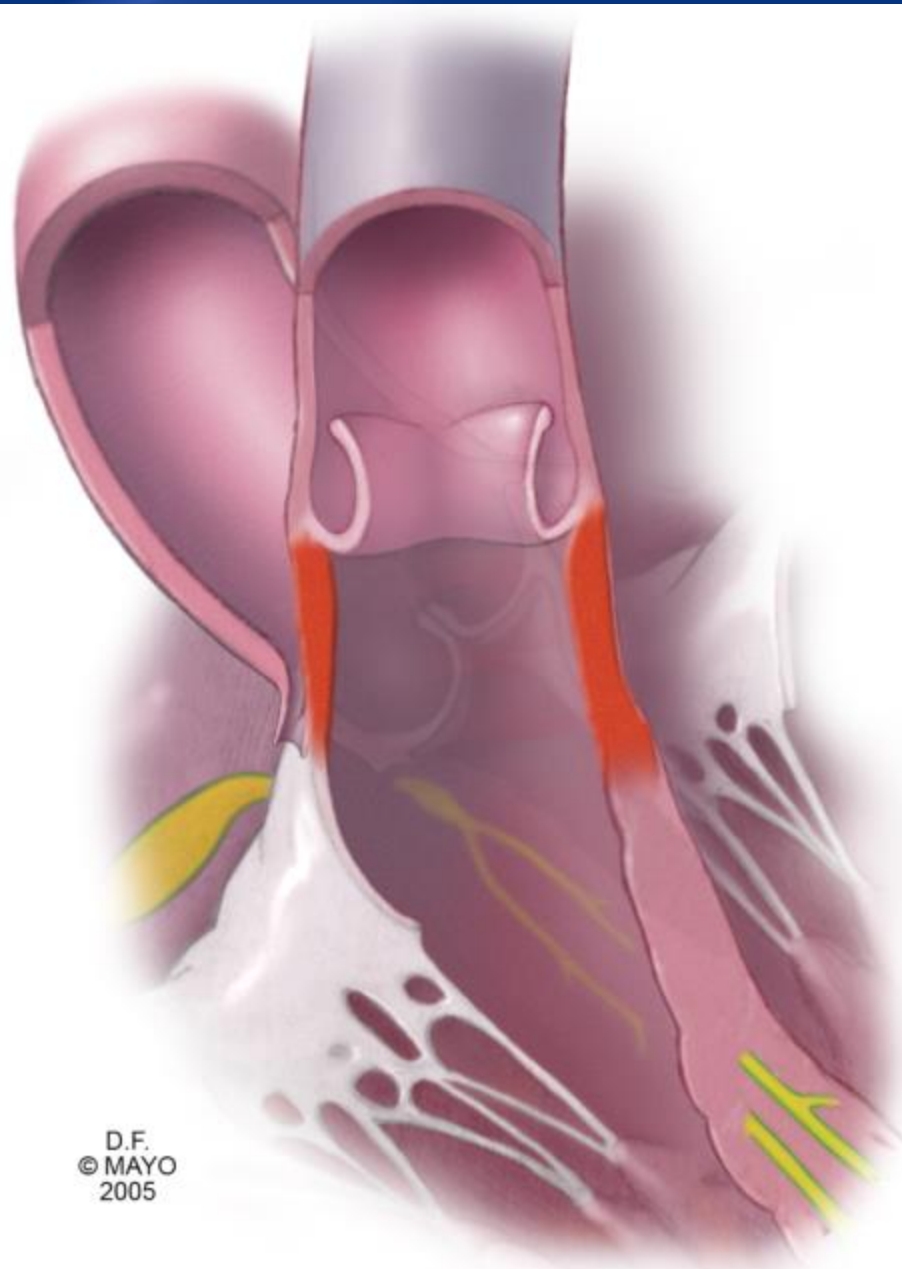


Long-Axis View



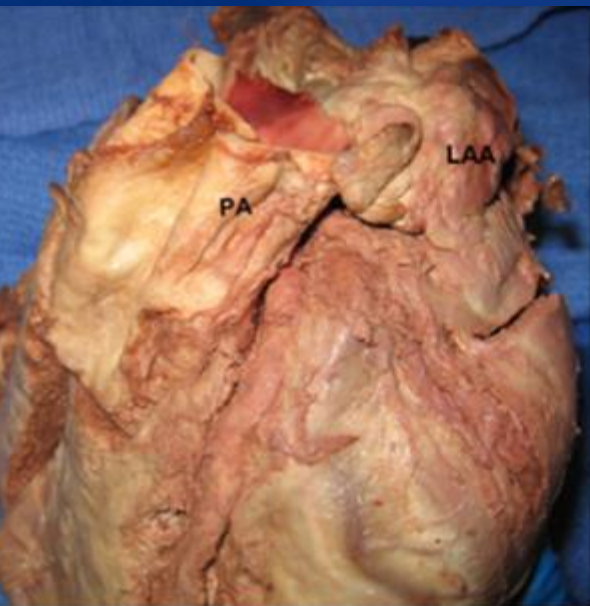
D.F.
© MAYO
2005

Ec1206088-005-0

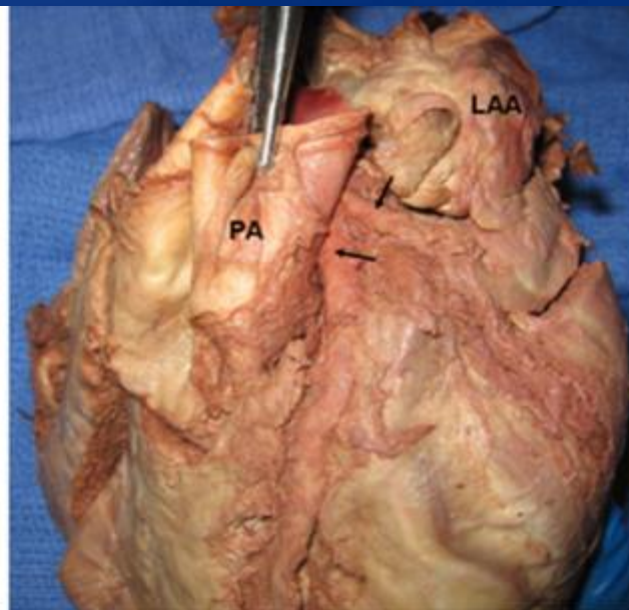


D.F.
© MAYO
2005

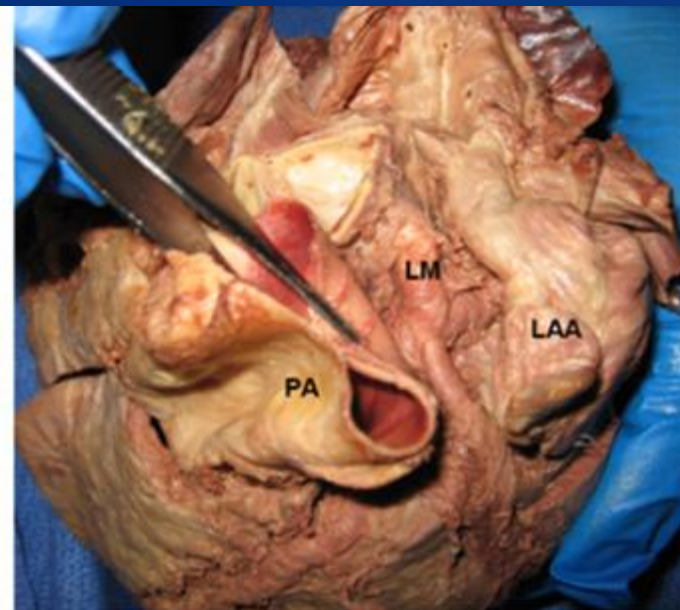
Ec1206088-006-0



A

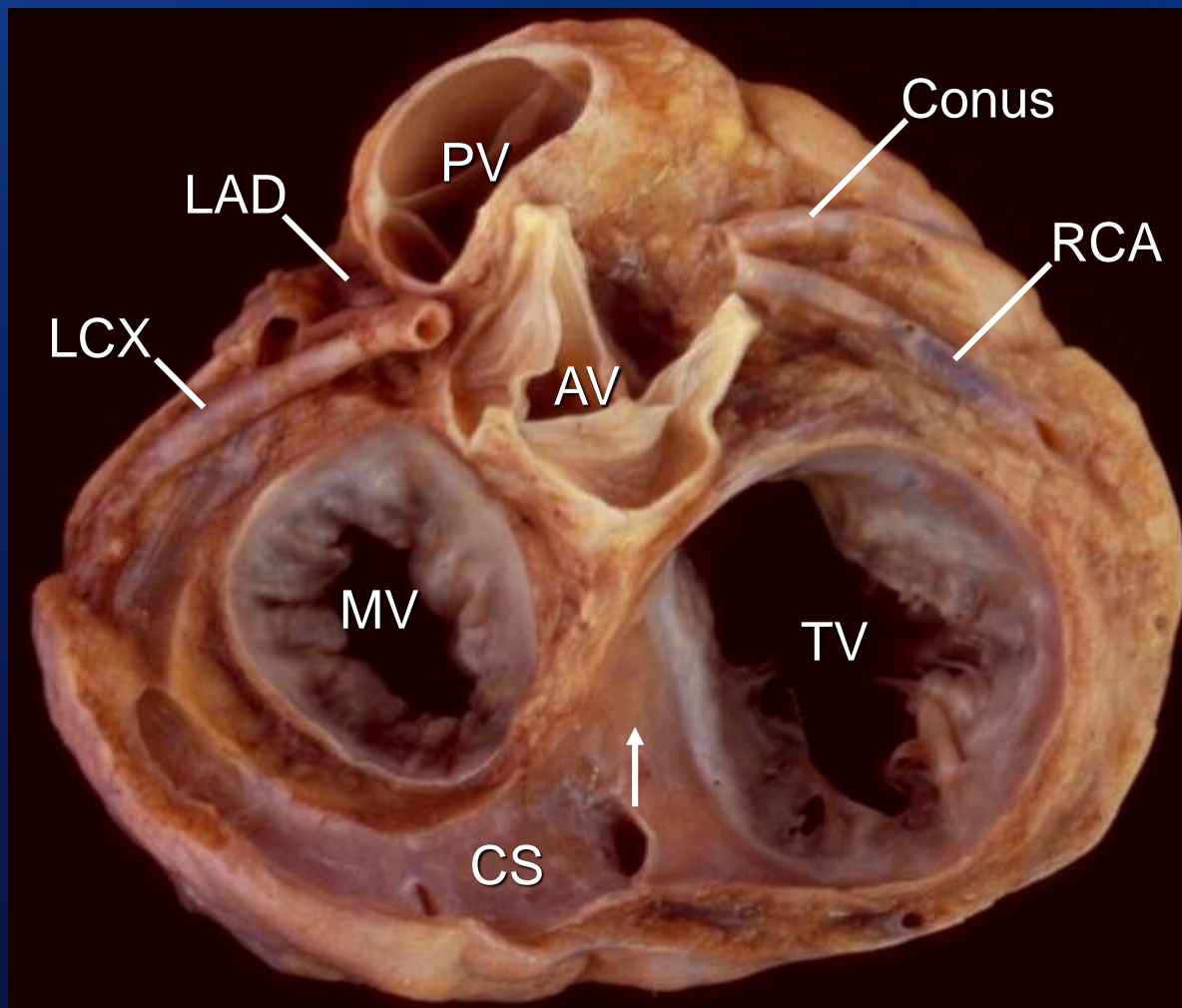


B



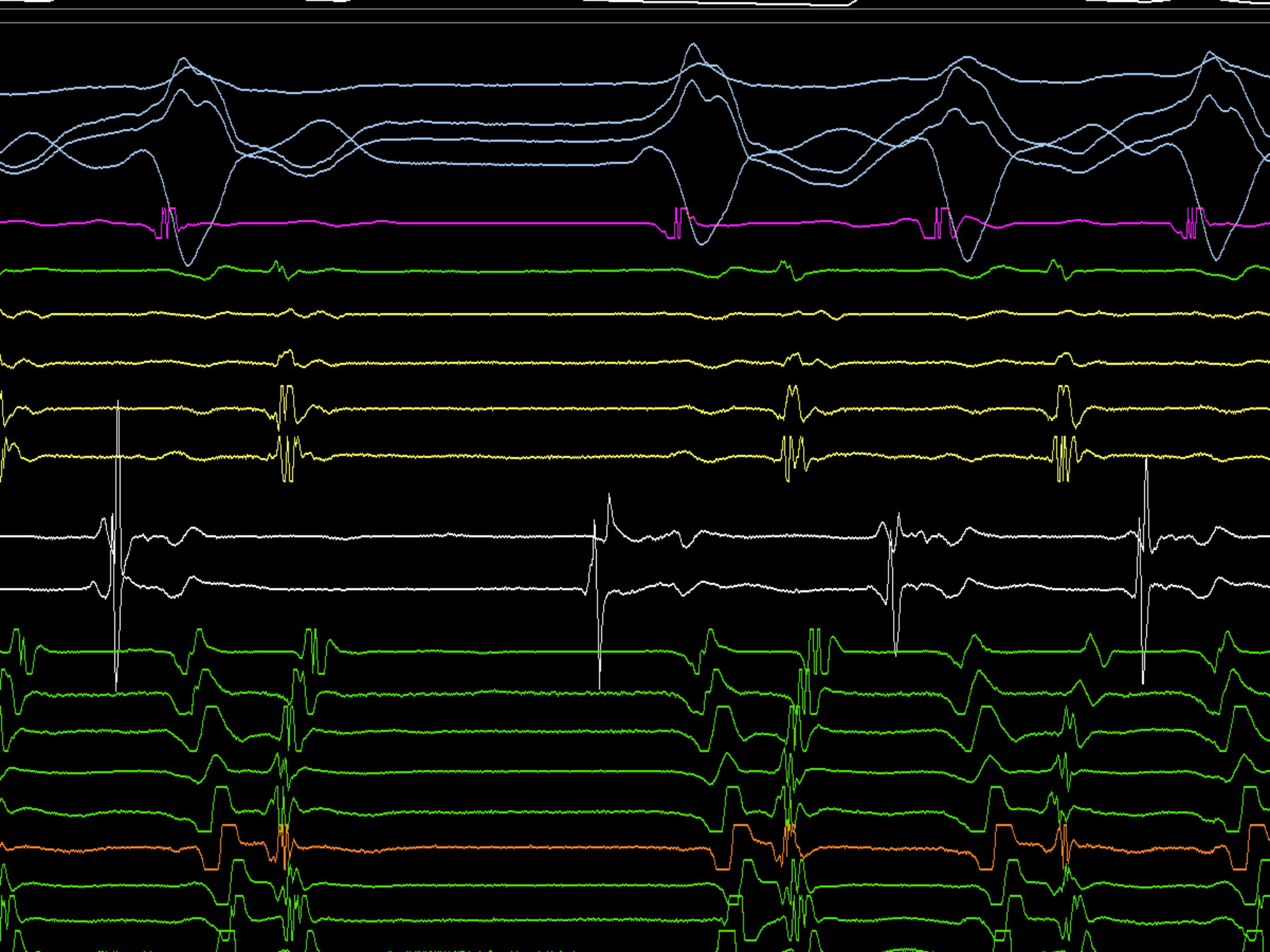
C

Normal Heart Valves & Coronary Arteries



Cardiac Base





PHILIPS

09/08/2008 02:19:38PM TIS0.2 MI 0.4

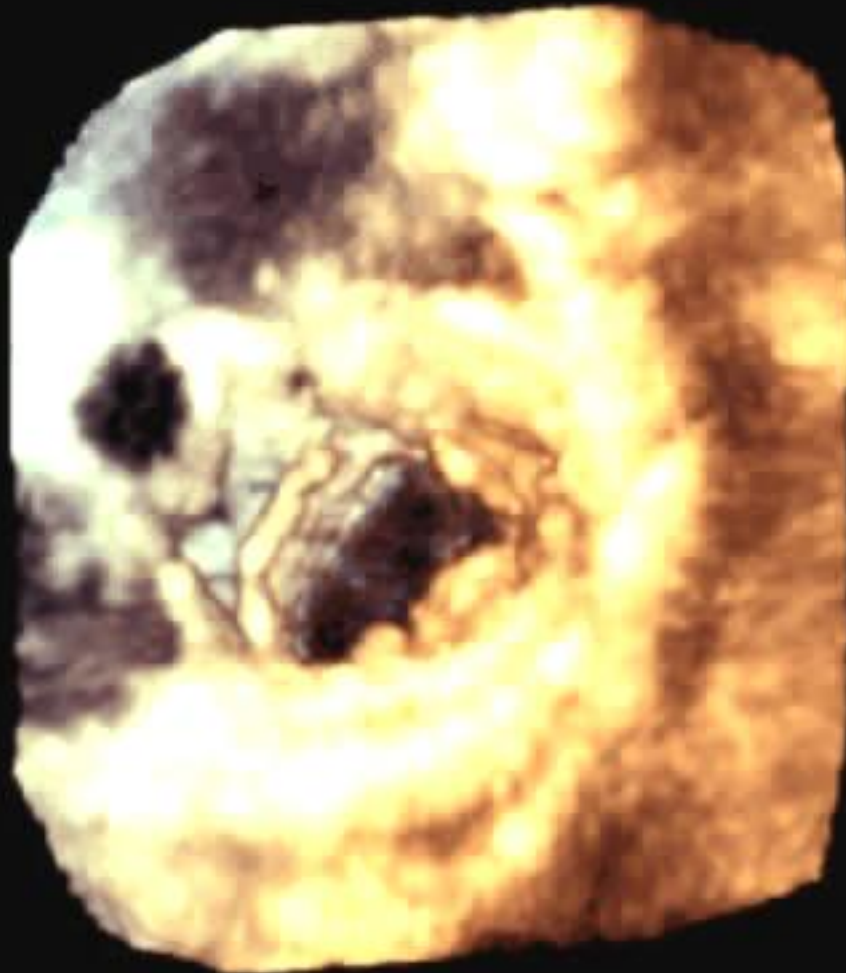
X7-2t/MCTEE

FR 5Hz
8.9cm

Live 3D
3D 20%
3D 40dB
Gen



AO MV
VENTRIC
VIEW



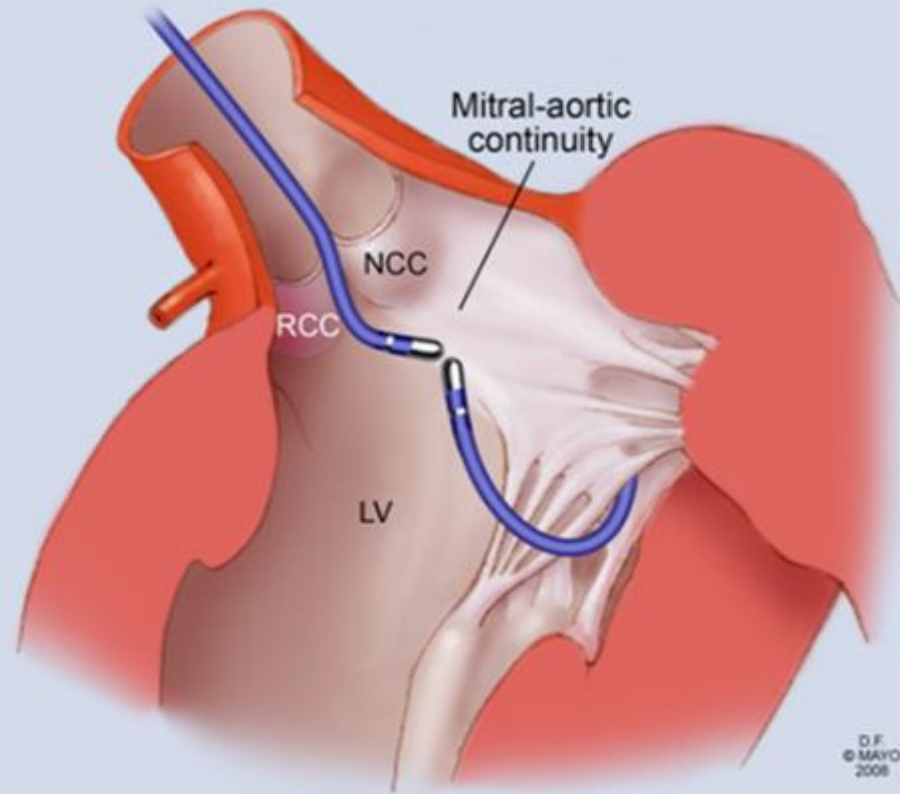
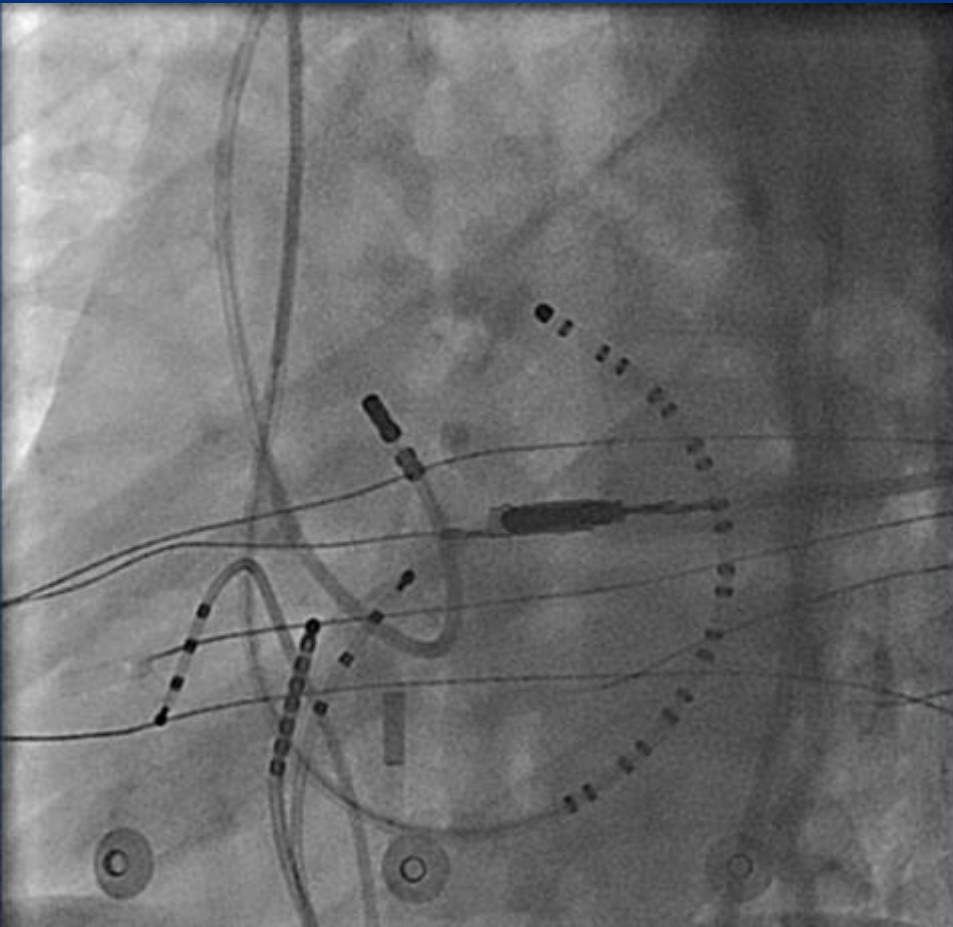
M4



JPEG

PAT T: 37.0C
TEE T: 39.6C

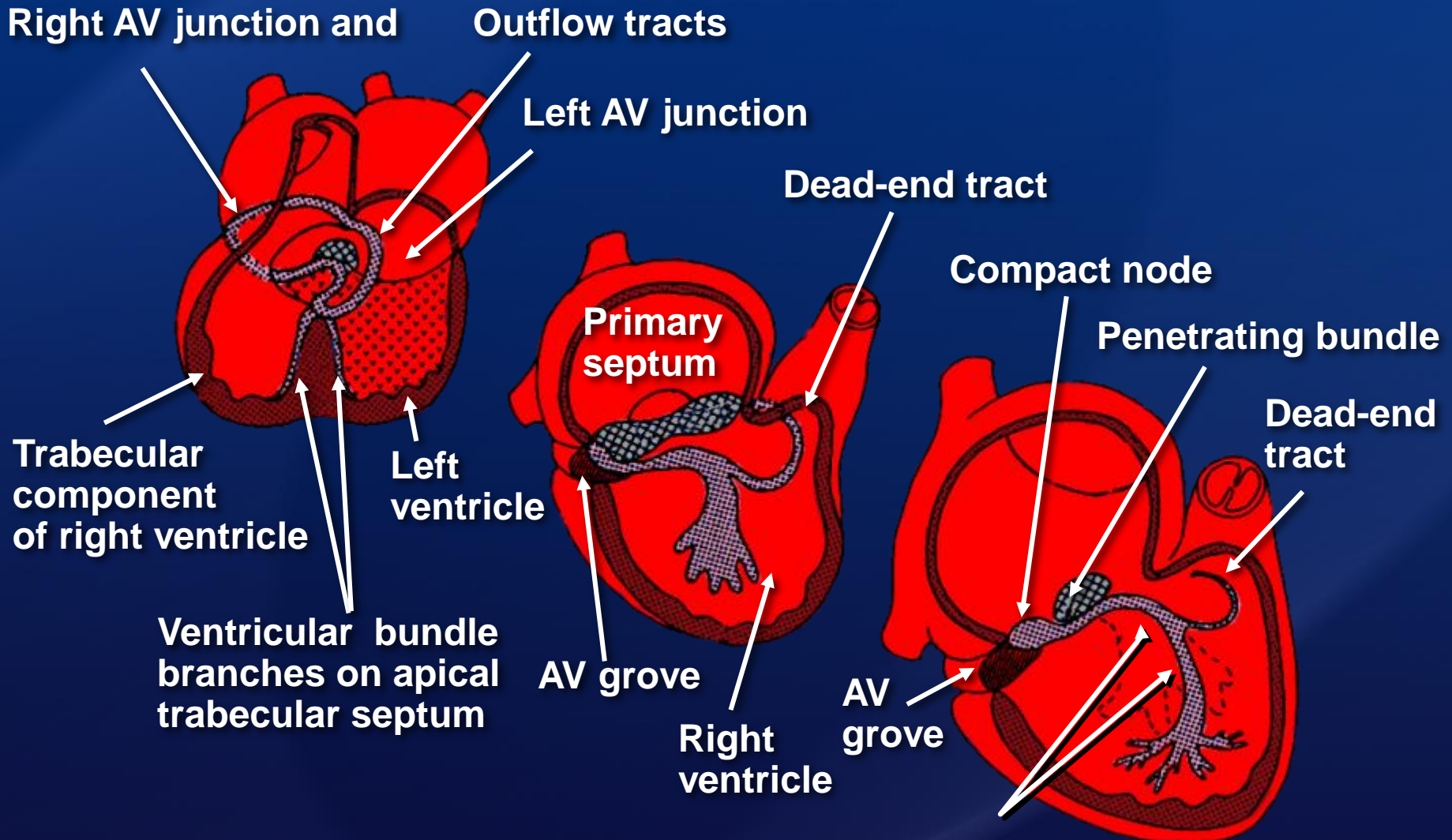
79 bpm



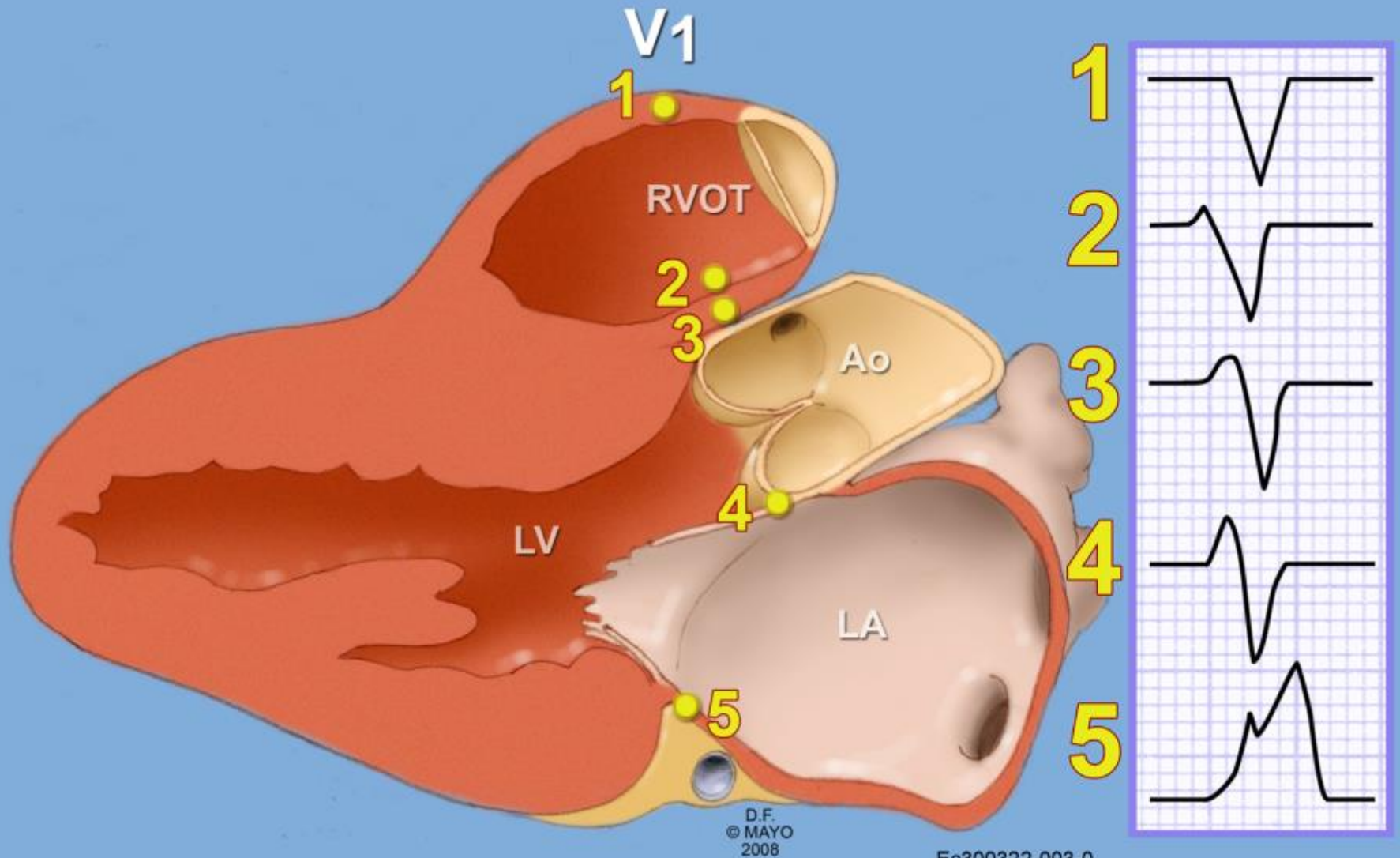
D.F.
© MAYO
2008

Ec1296211-005-0

Inlet-outlet ring around



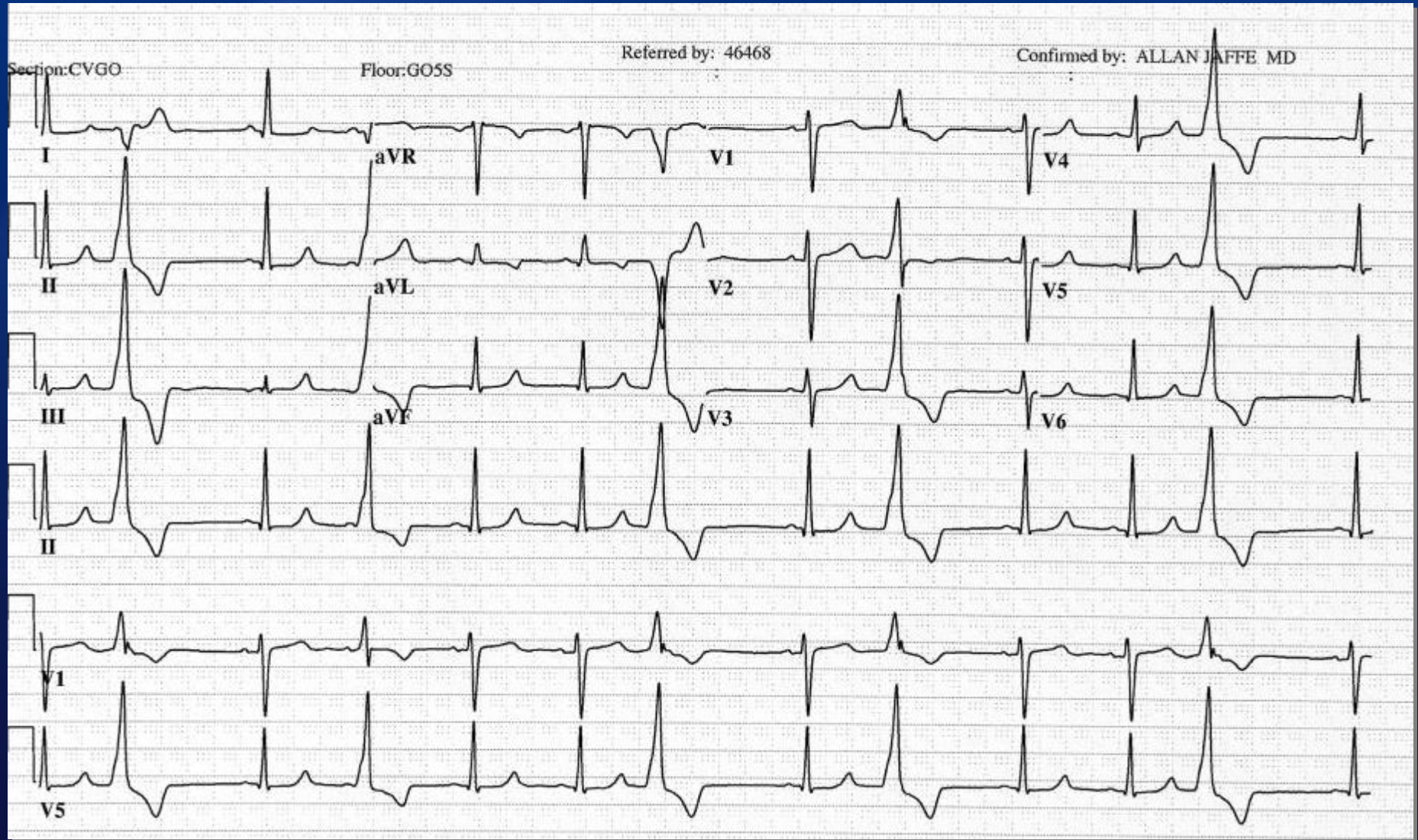
Branching bundle and bundle branches



D.F.
© MAYO
2008

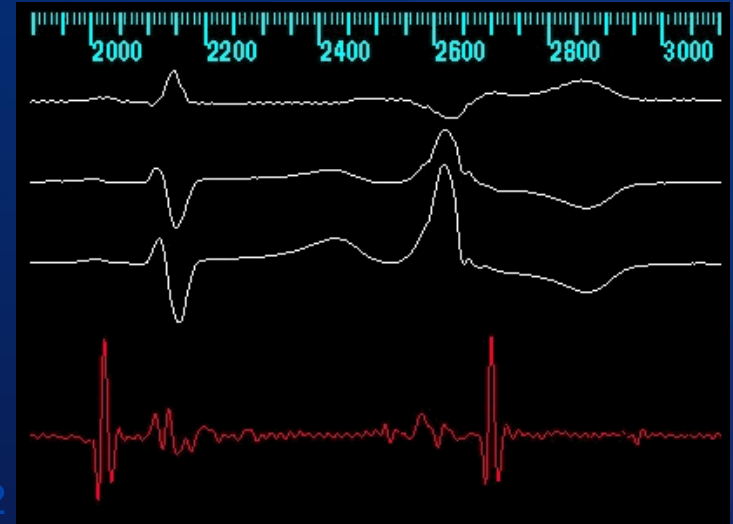
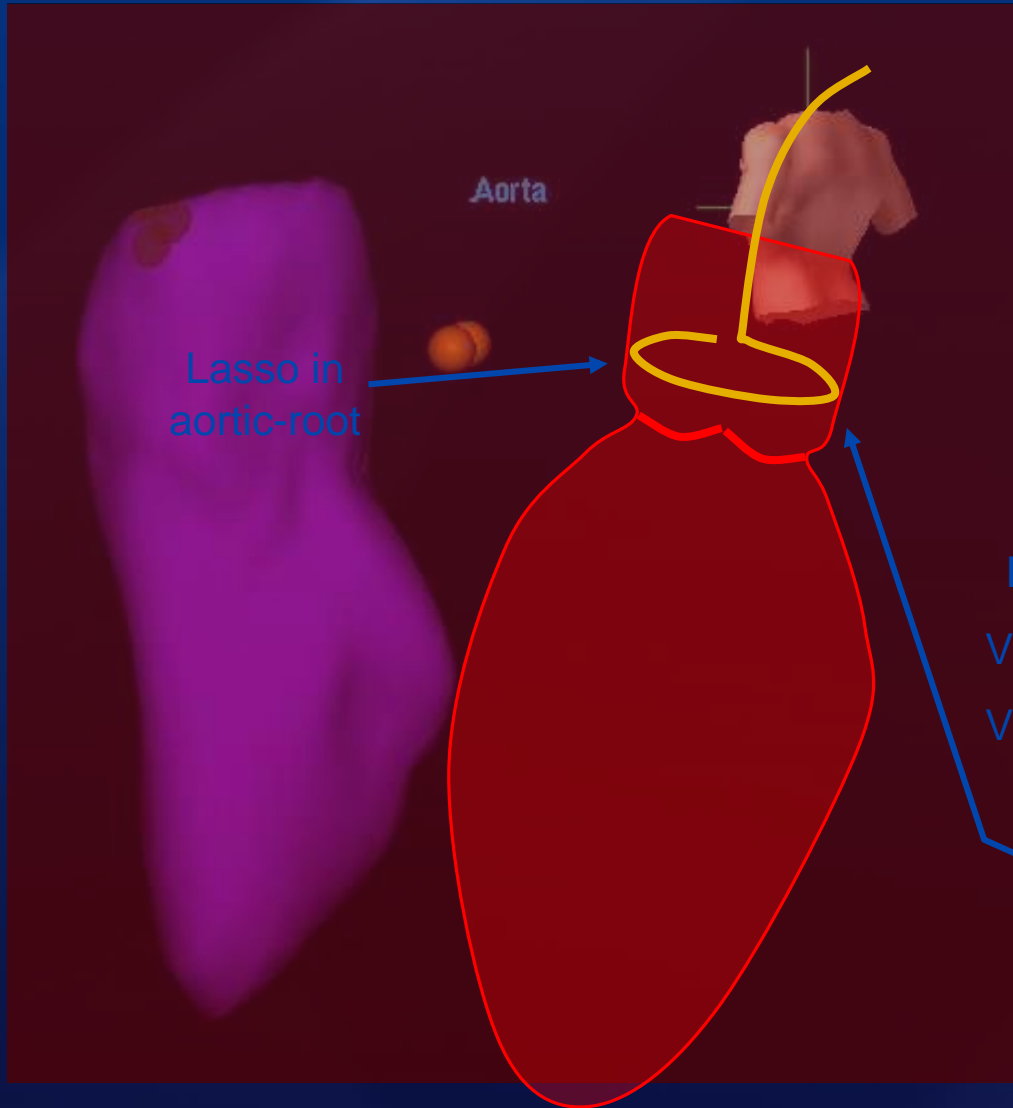
Ec300322-003-0

12-lead ECG

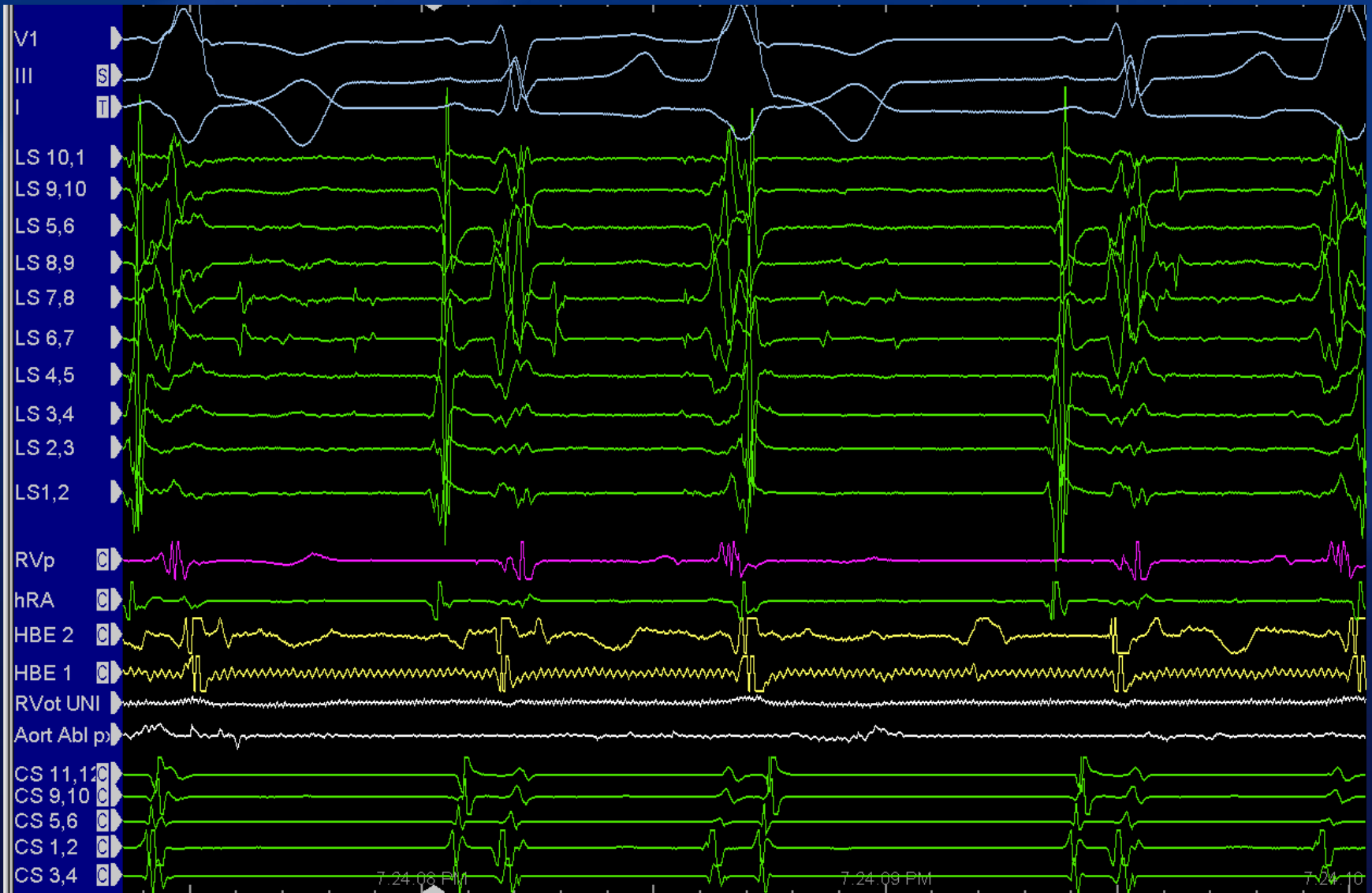


RVOT Anatomy

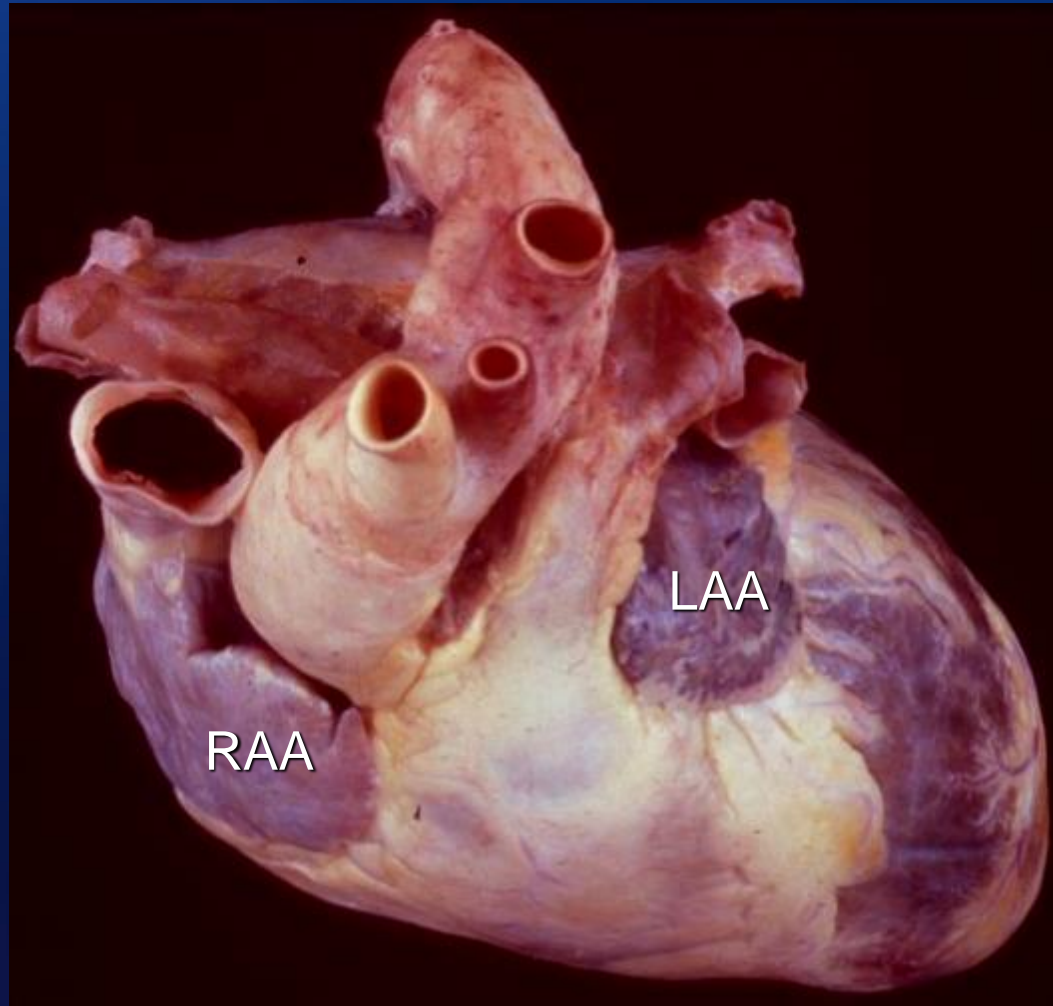
LPO



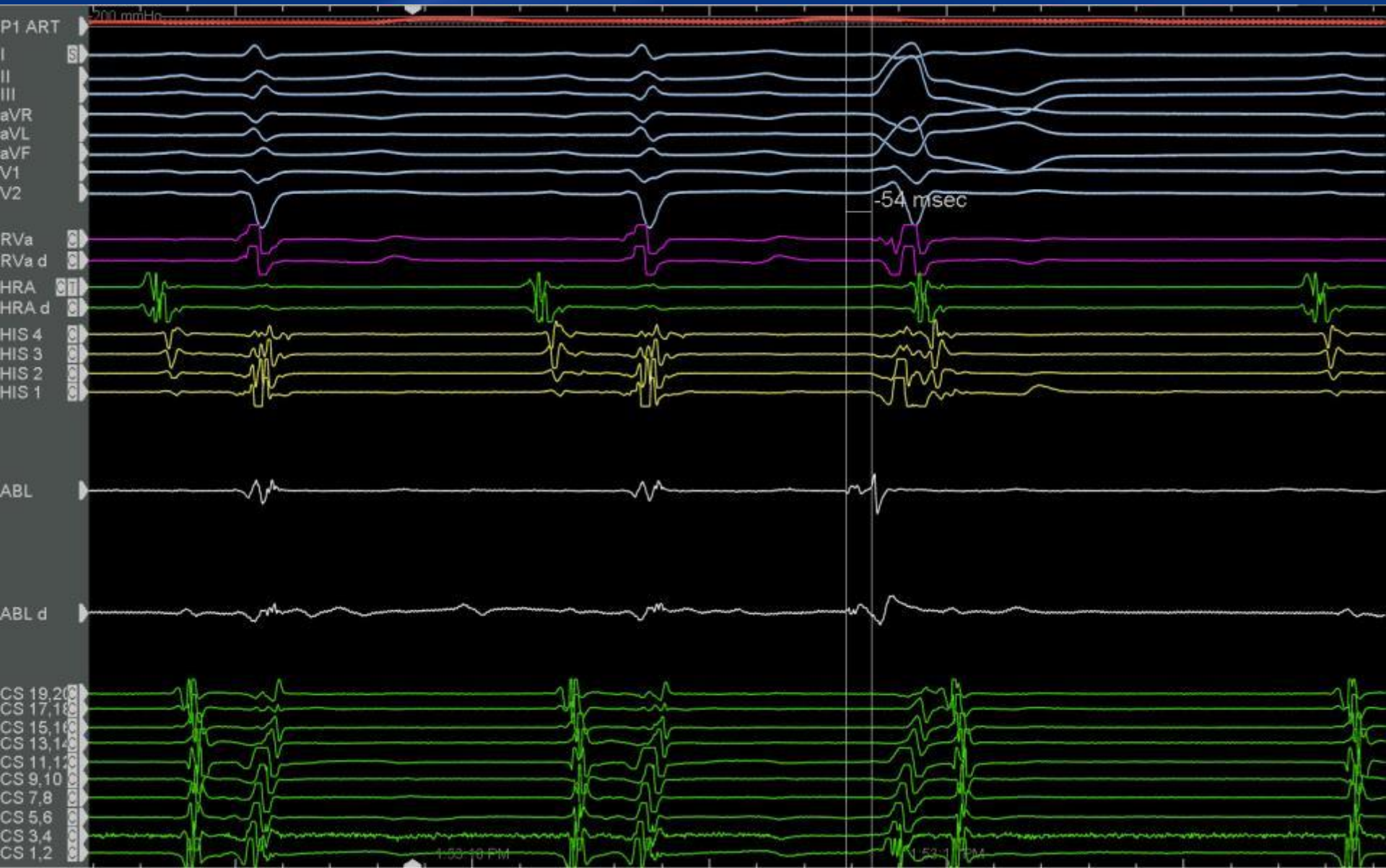
Lasso at Aortic Sinus of Valsava



Normal Heart External Topography

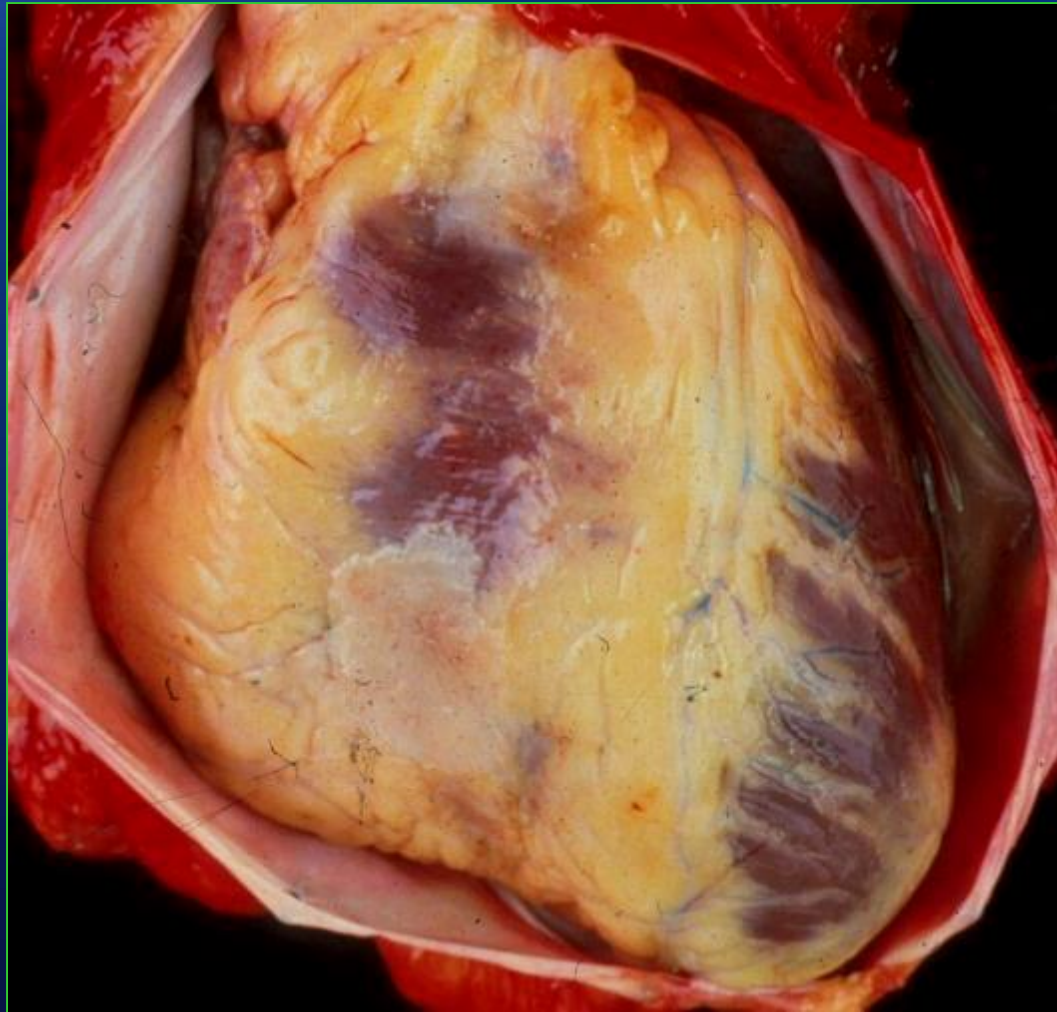


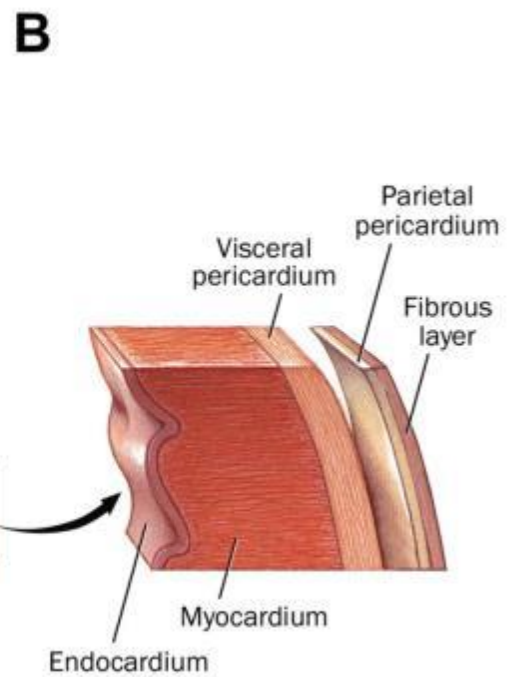
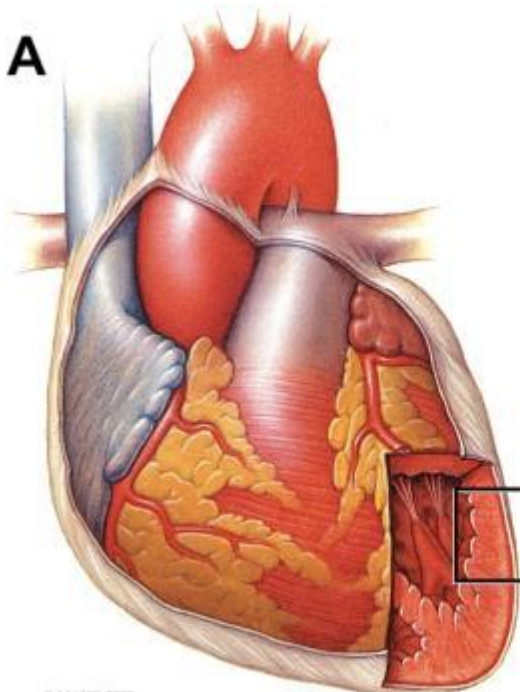
Superior View



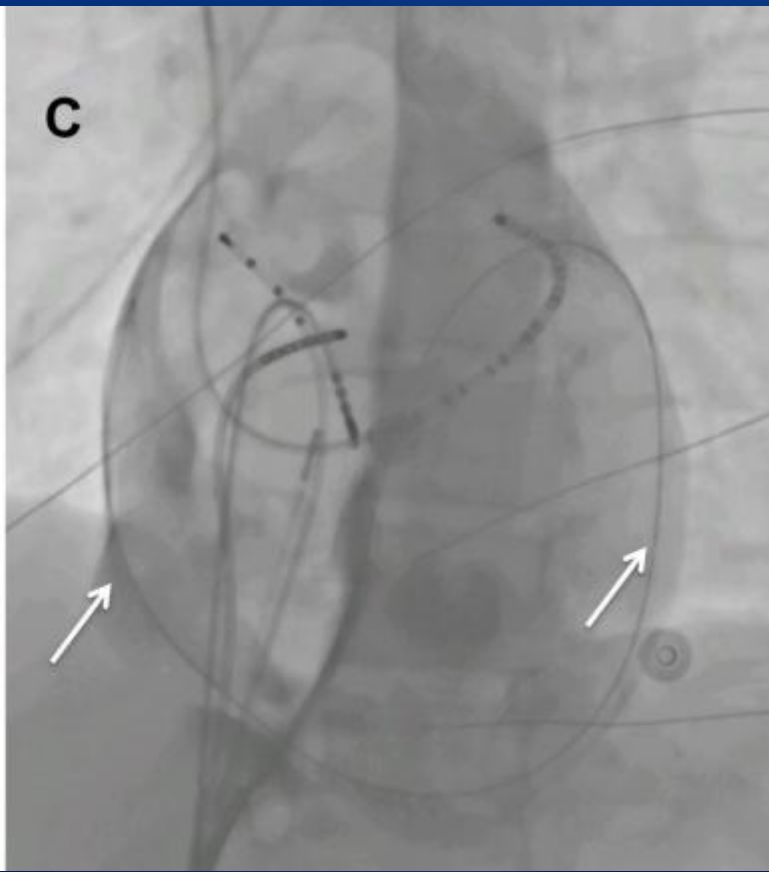


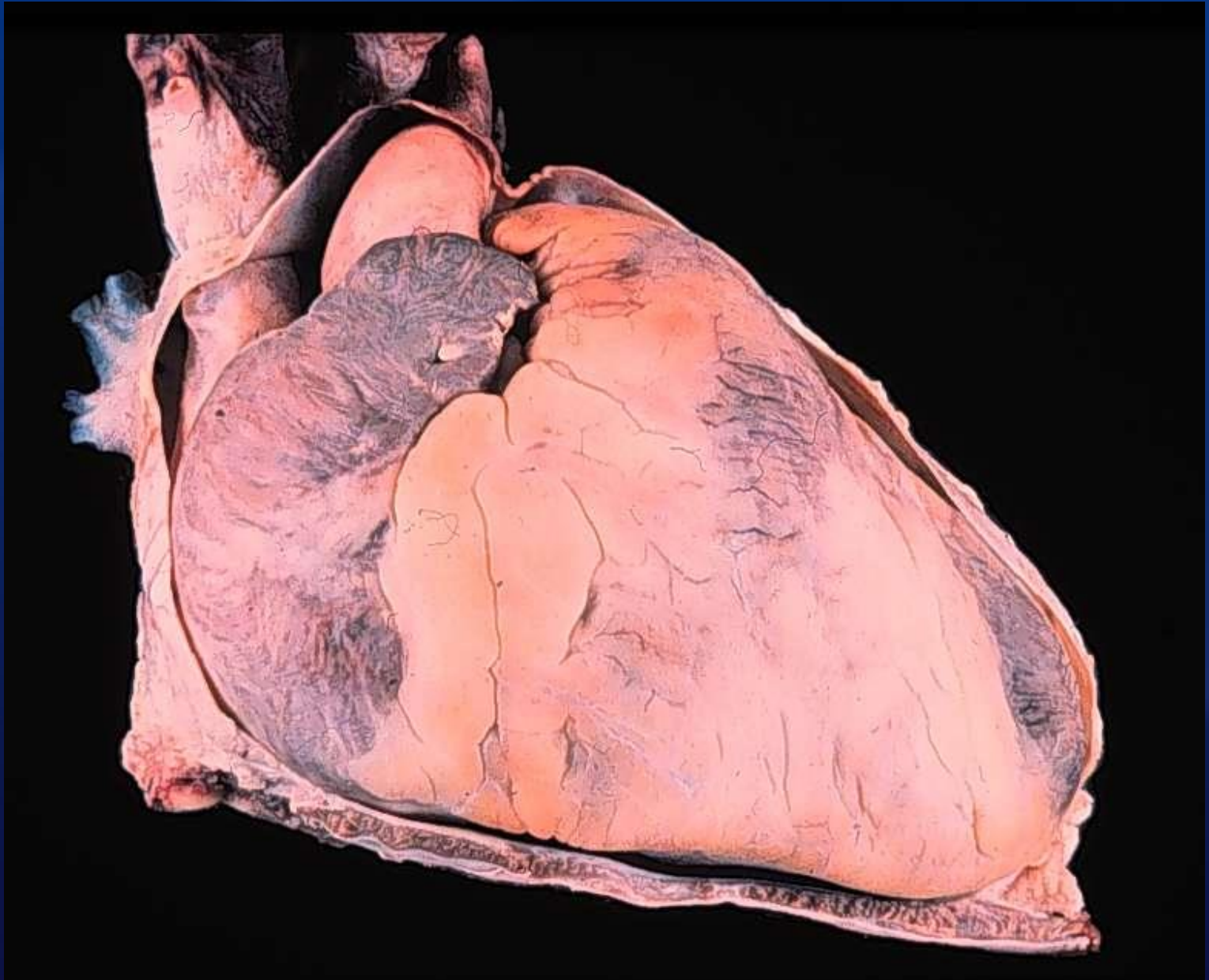


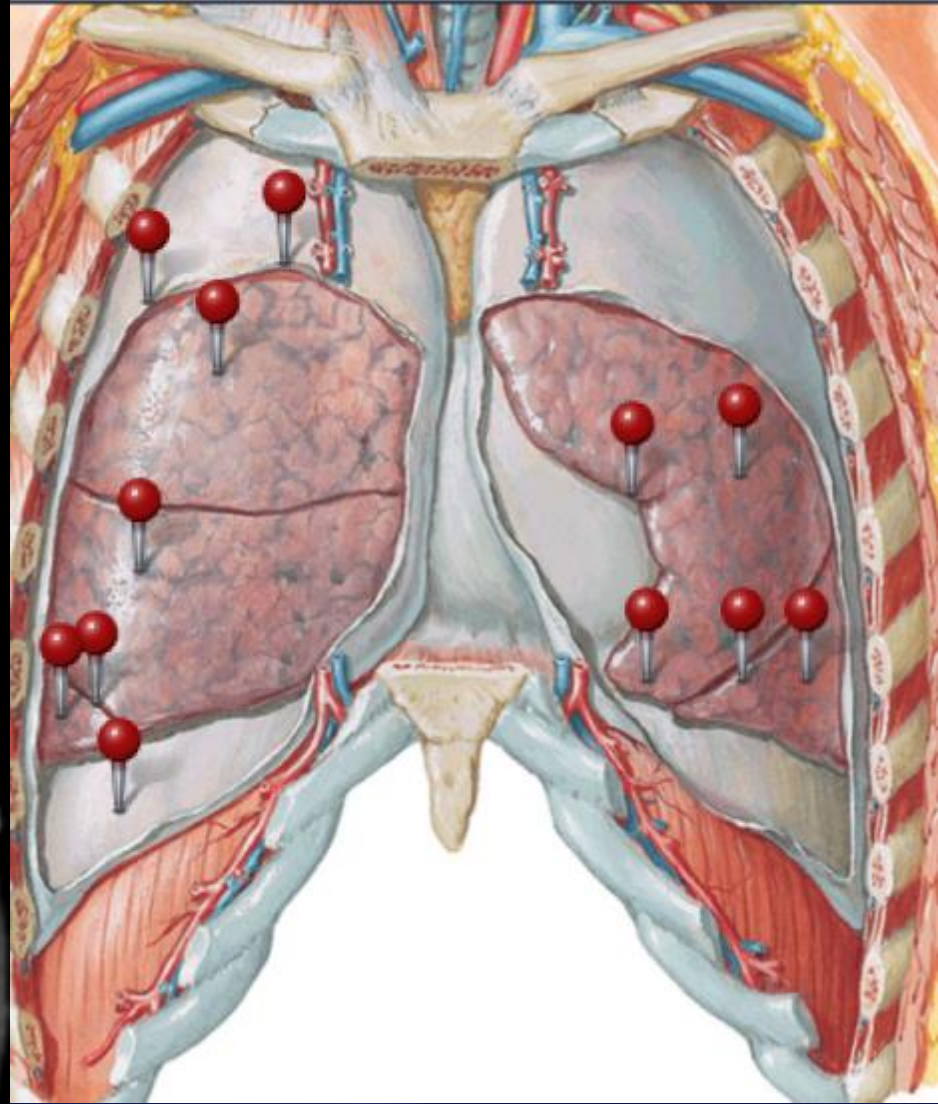


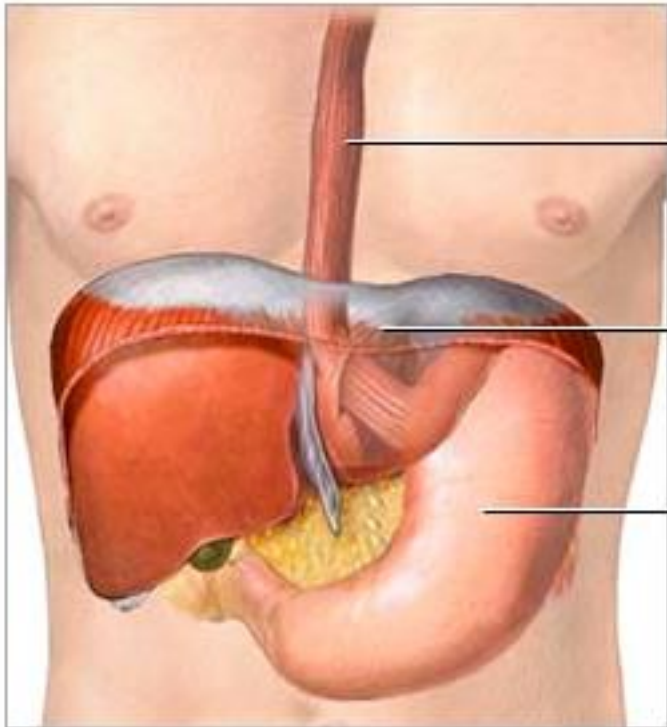


E3022756-001-0









Esophagus

Diaphragm

Stomach

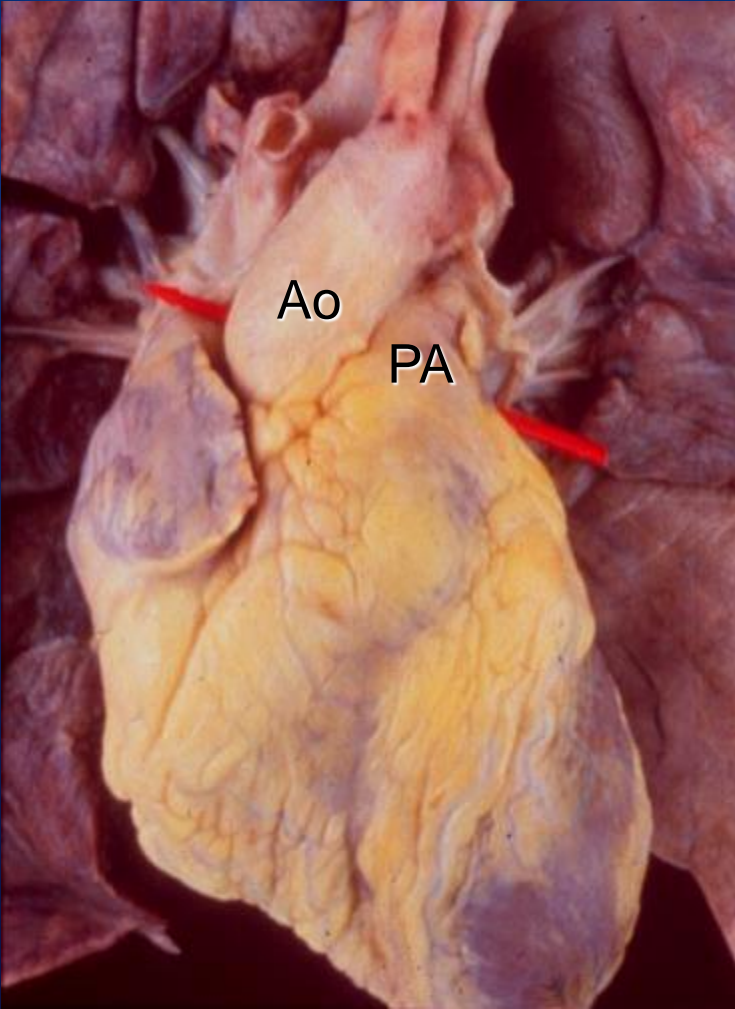


The diaphragm
is shaped
like a parachute

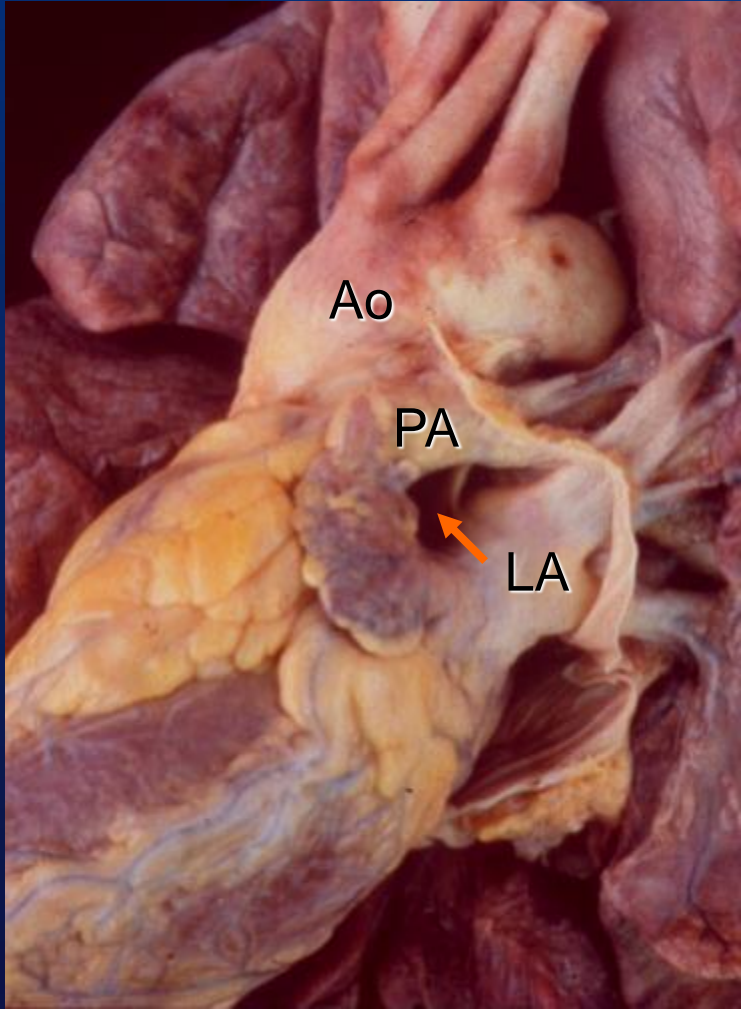


© ADAM, Inc.

Normal Heart Transverse Sinus

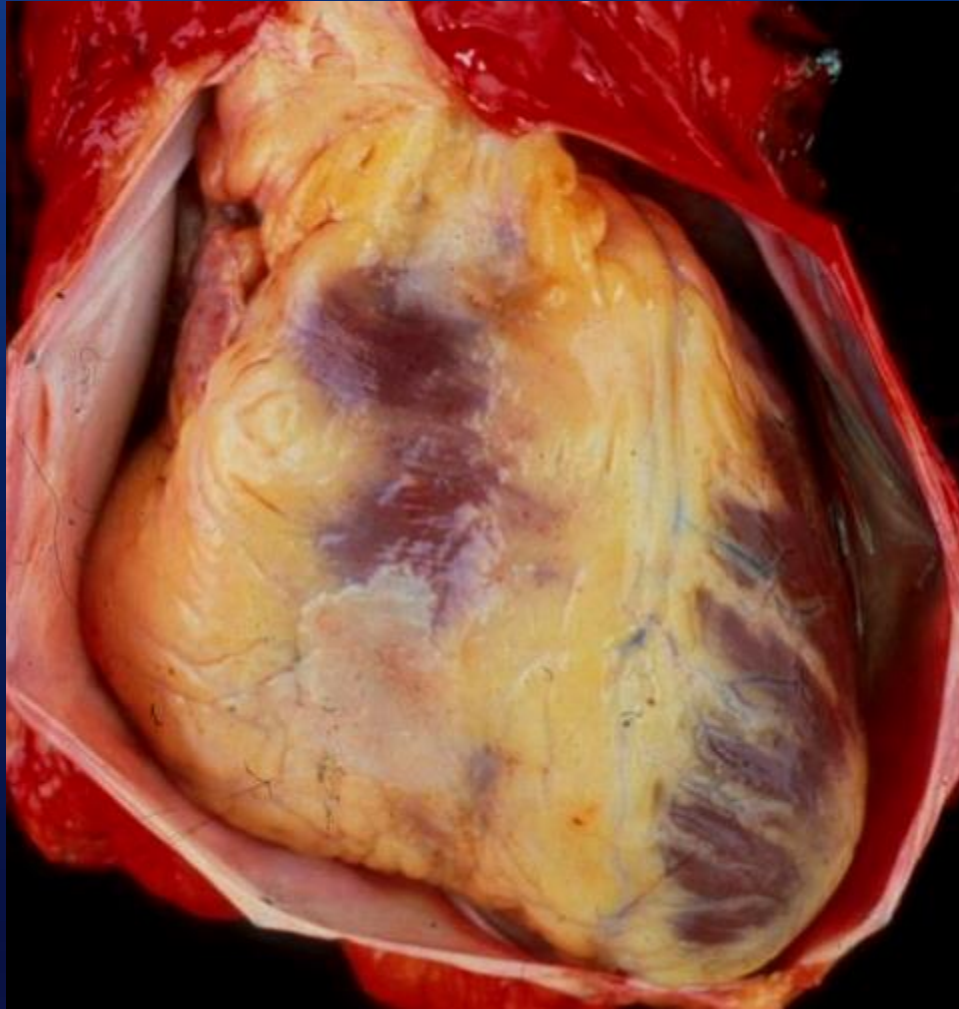


Anterior View



Left Lateral View

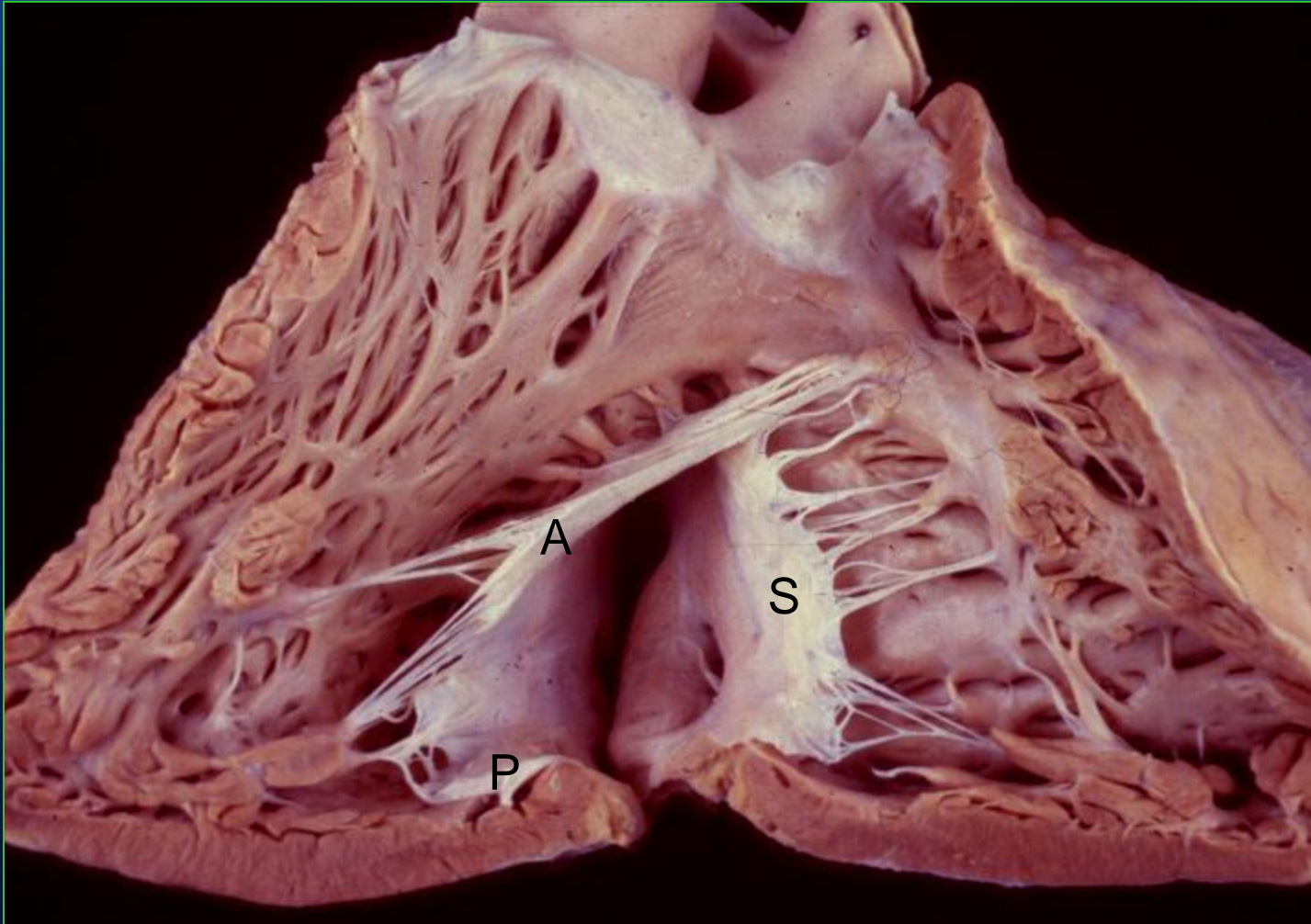
Normal Heart Pericardium



Opened Parietal Pericardium

Internal Cardiac Anatomy

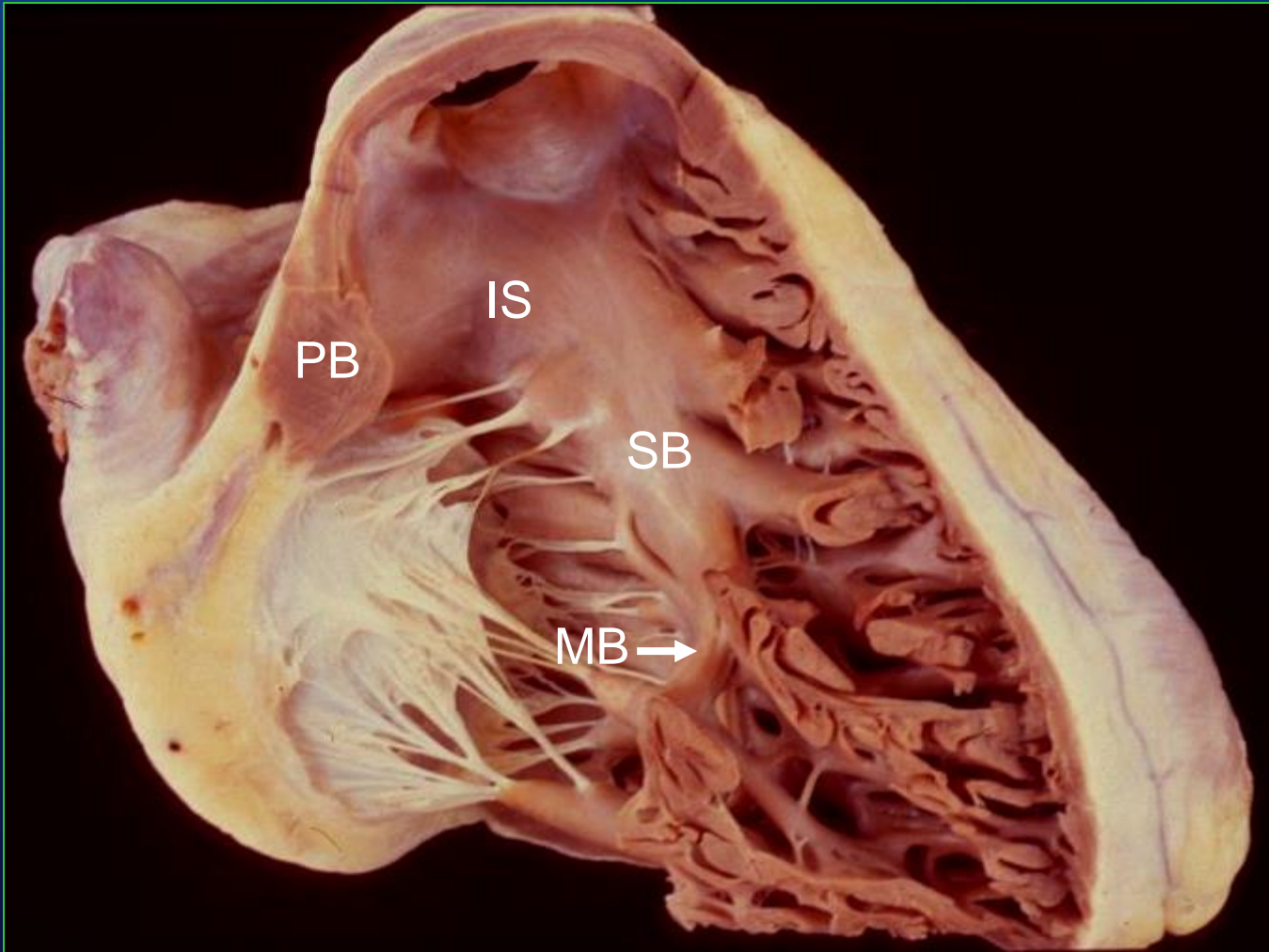
Atrioventricular Valves



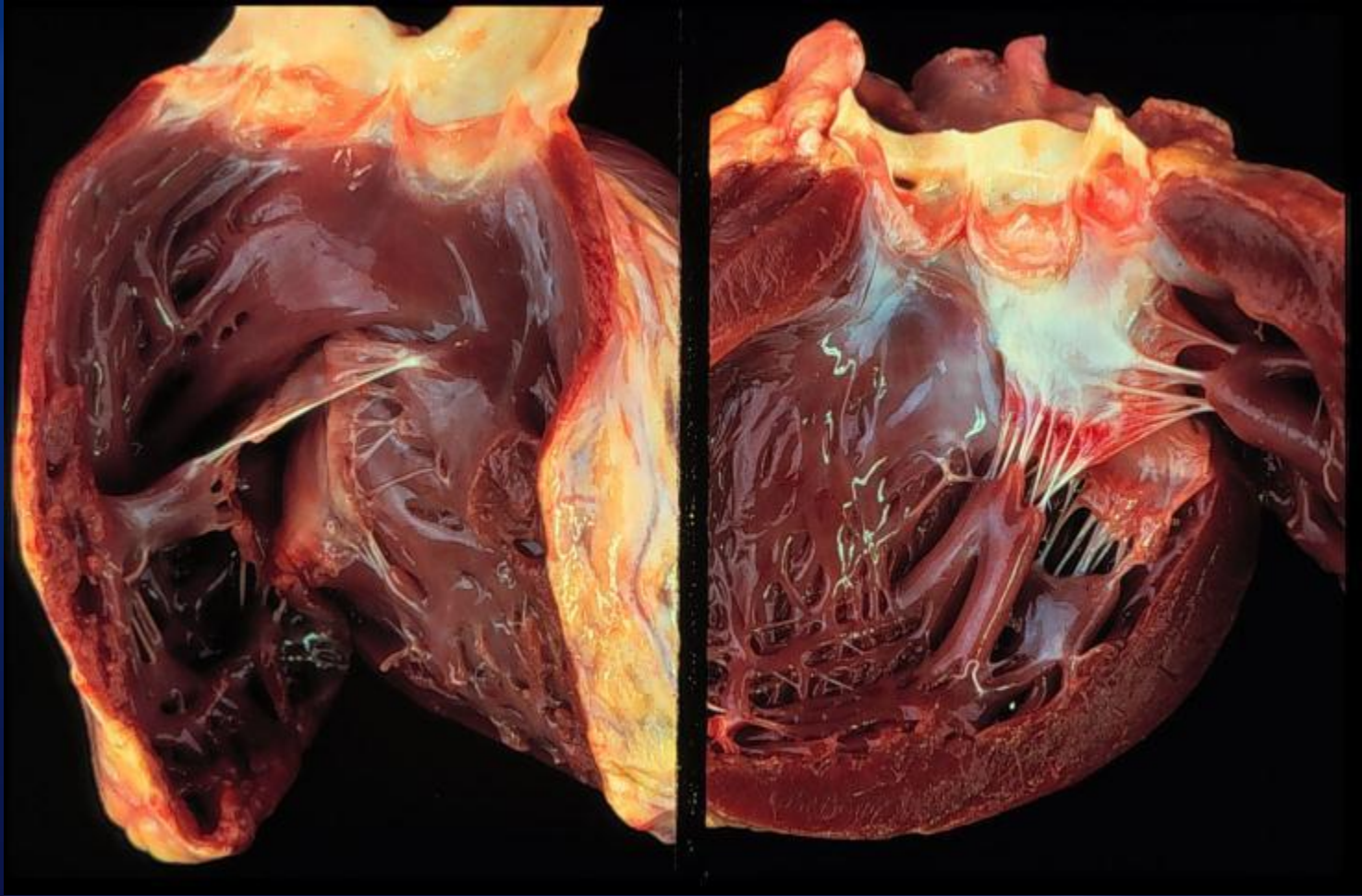
Tricuspid Valve (RV View)

Internal Cardiac Anatomy

Ventricles

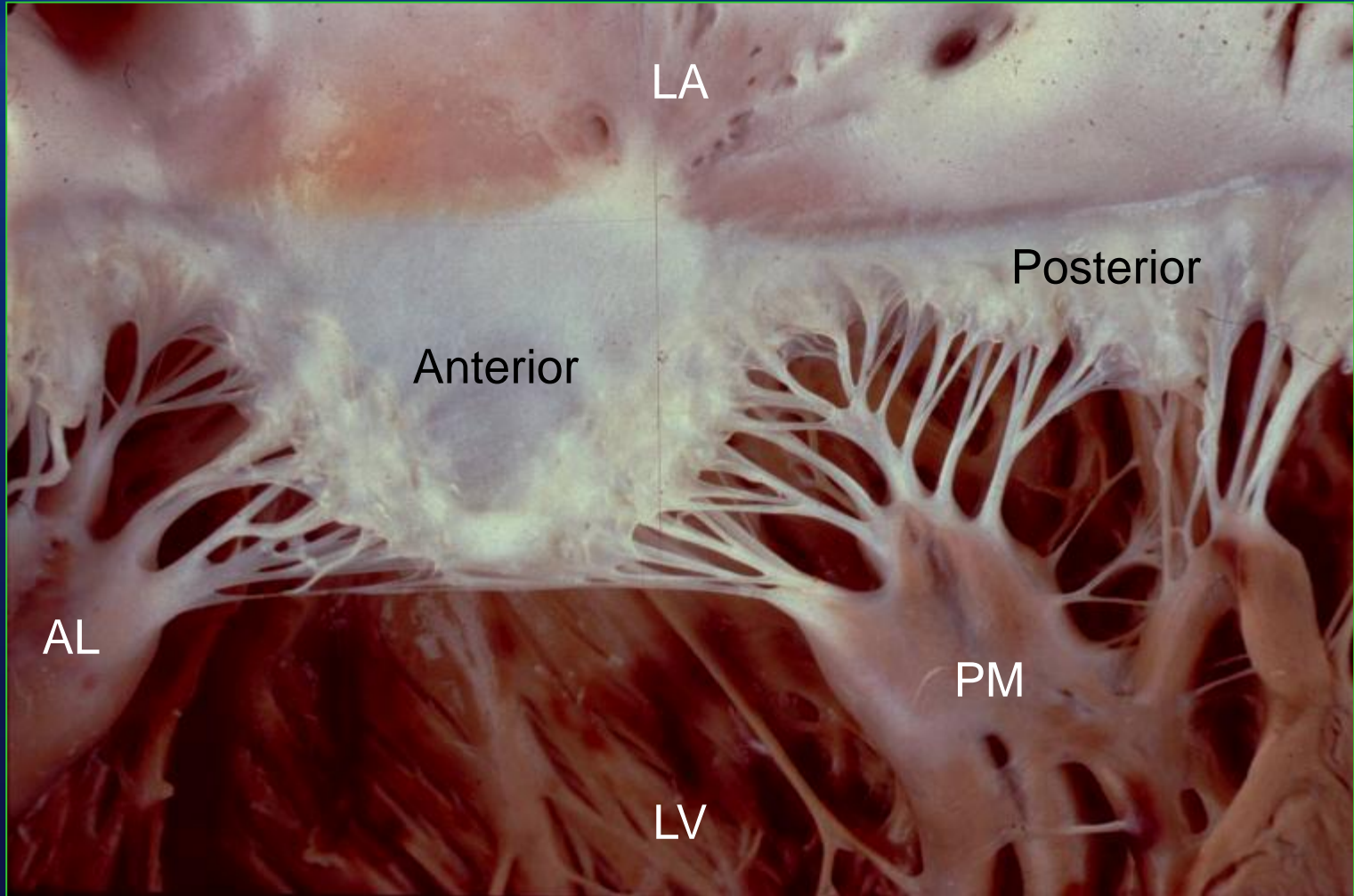


Right Ventricle (Wall Removed, Ant View)

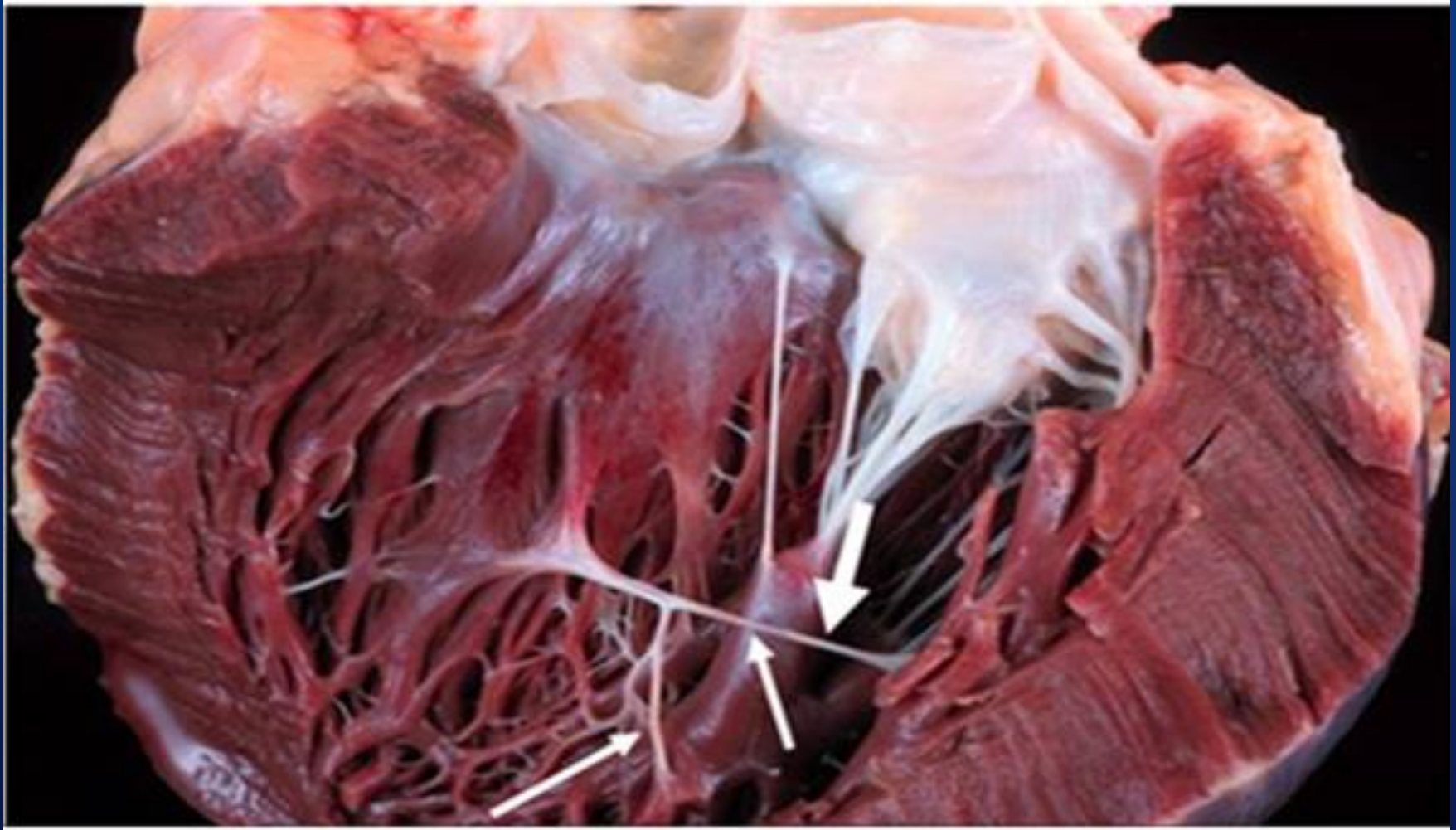


Internal Cardiac Anatomy

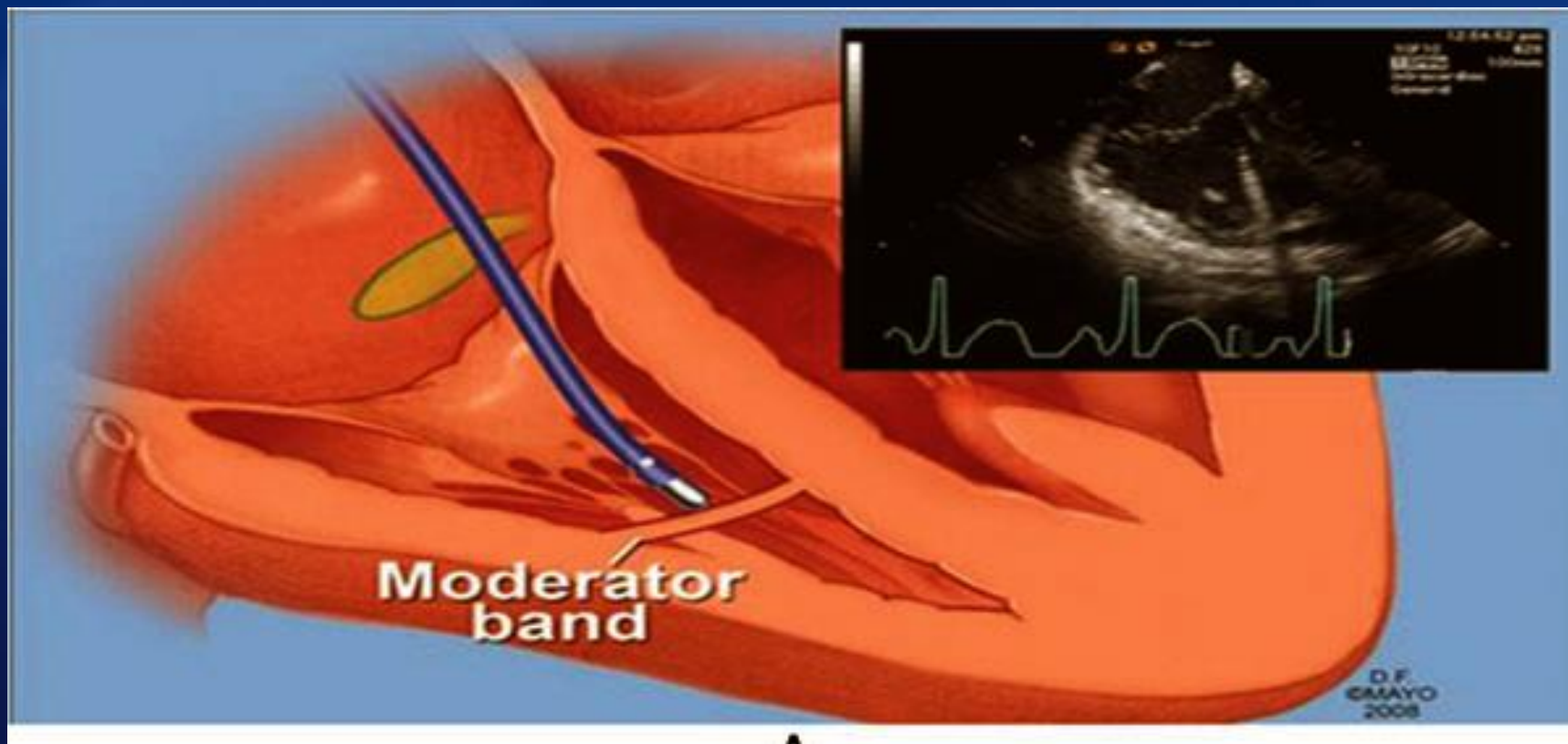
Atrioventricular Valves

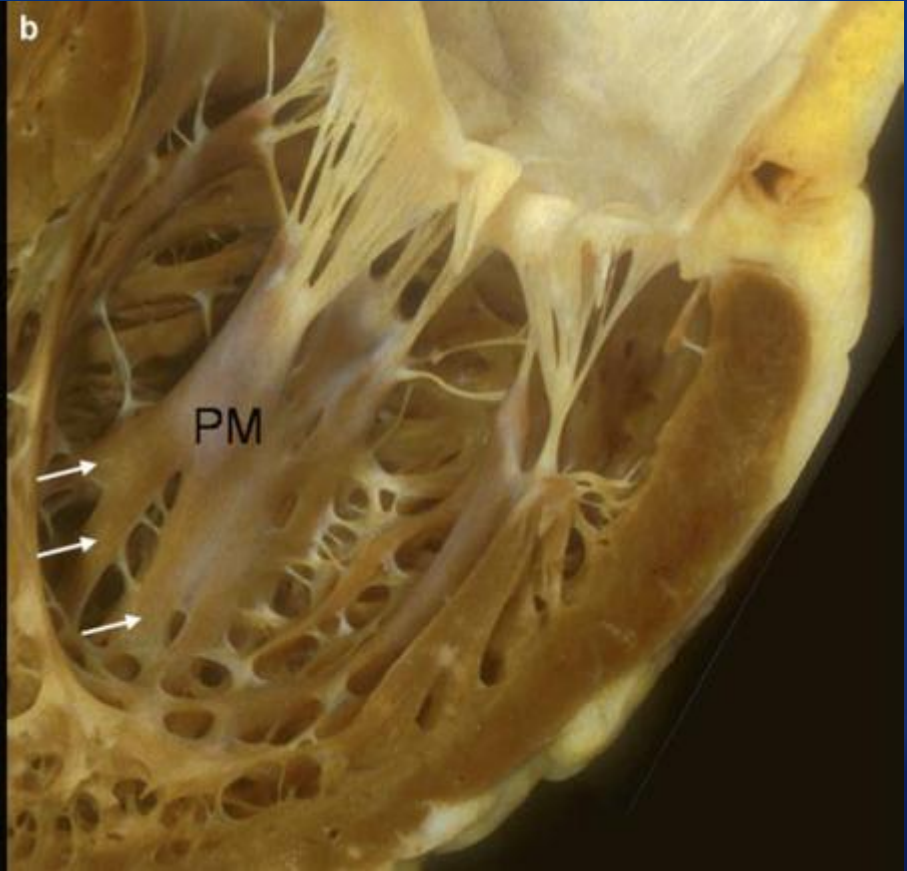
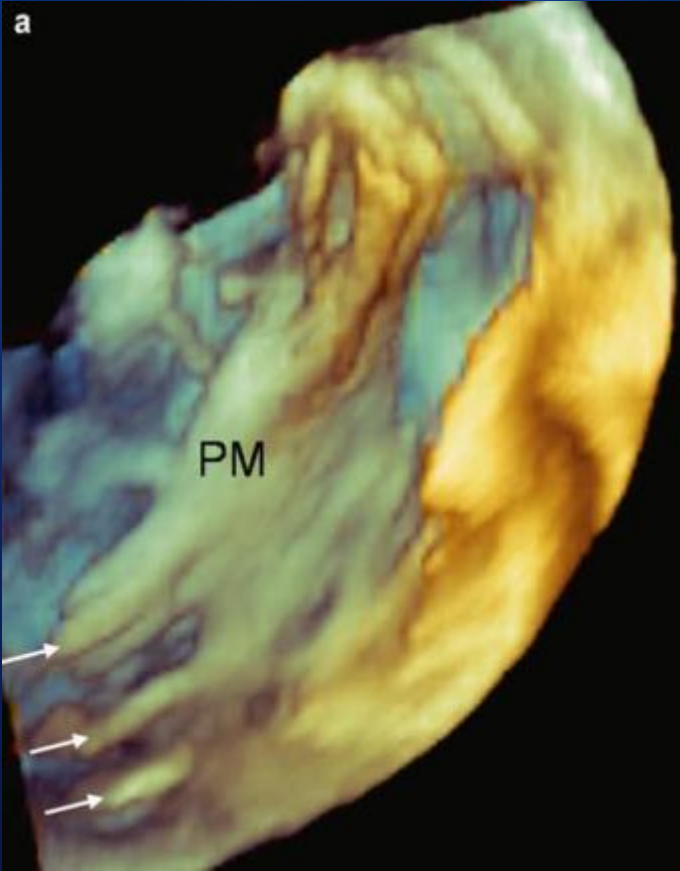


Mitral Valve (Opened, LA Aspect)

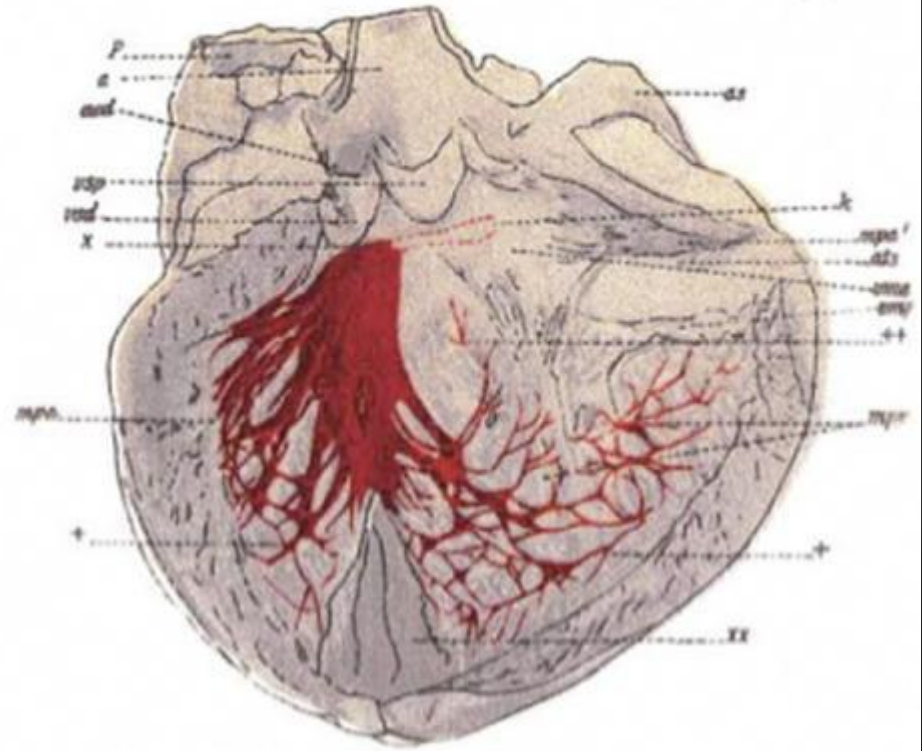
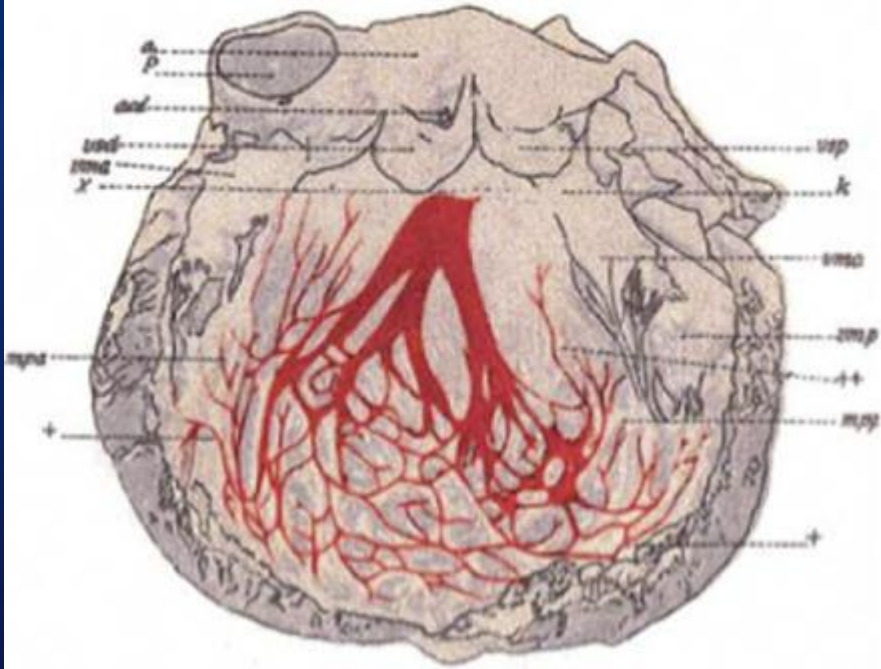


Moderator band VT





Left Fascicular System



Tawara



RV-LV and Epicardial Anatomy in VT



Samuel J. Asirvatham, M.D.
Mayo Clinic – Rochester
AF, VT, VF Summit – Chicago, Illinois
Friday, December 6, 2019: 7:50 to 8:15 a.m.