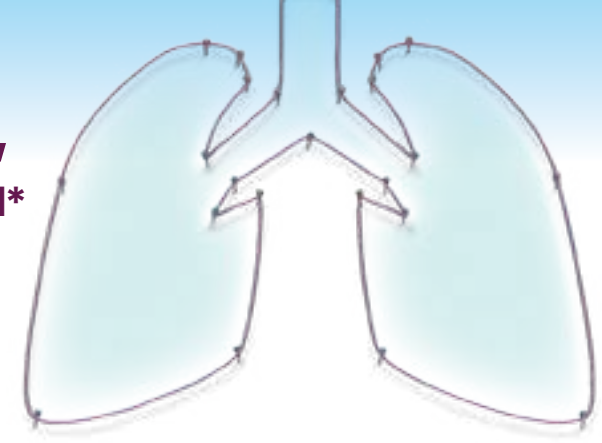


3 REASONS TO CHOOSE TECENTRIQ + CARBO/ETOP, THE #1 MOST PRESCRIBED REGIMEN IN 1L ES-SCLC^{1*}



- 1 1ST AND ONLY immunotherapy combination with significantly superior OS and PFS in 1L ES-SCLC, as demonstrated in the IMpower133 trial^{2,3}**
 - 12.3 months median OS vs 10.3 months with placebo + carbo/etop (HR=0.70[†]; 95% CI, 0.54, 0.91; P=0.0069)^{2,3,§}
 - 5.2 months median PFS vs 4.3 months with placebo + carbo/etop (HR=0.77; 95% CI, 0.62, 0.96; P=0.0170)^{2,3,¶}
 - 1st FDA-approved treatment for 1L ES-SCLC in 20 years^{2,4}
- 2 Nearly 2 YEARS of follow-up OS data¹**
 - Additional exploratory analysis conducted to further evaluate survival benefit
- 3 3 FLEXIBLE, CHEMO-FREE maintenance dosing options**
 - The first and only regimen with **q4w, q3w, and q2w** maintenance dosing options in 1L ES-SCLC²

NCCN
CATEGORY 1,
PREFERRED



Atezolizumab (TECENTRIQ) + carbo/etop is a preferred immunotherapy/chemotherapy option (Category 1) for first-line treatment of patients with ES-SCLC in the NCCN Clinical Practice Guidelines in Oncology (NCCN Guidelines[®]).^{5¶¶}

1L=first line; carbo/etop=carboplatin/etoposide; CI=confidence interval; ECOG=Eastern Cooperative Oncology Group; EMR=electronic medical record; ES-SCLC=extensive-stage small cell lung cancer; HR=hazard ratio; NCCN=National Comprehensive Cancer Network; OS=overall survival; PFS=progression-free survival; PS=performance status; q2w=every 2 weeks; q3w=every 3 weeks; q4w=every 4 weeks.

*Flatiron EMR data ending March 2020.

†Analyses were stratified by gender and ECOG PS.

‡Based on the stratified log-rank test.

§Based on OS interim analysis.

¶As determined by investigator per RECIST v1.1.

¶¶NCCN makes no warranties of any kind whatsoever regarding their content, use, or application, and disclaims any responsibility for their application or use in any way. See the NCCN Guidelines[®] for detailed recommendations, including other preferred options.

¶¶¶Category 1: based upon high-level evidence, there is uniform NCCN consensus that the intervention is appropriate.

► Learn more at TECENTRIQ-HCP.com/3reasons

Indication

TECENTRIQ, in combination with carboplatin and etoposide, is indicated for the first-line treatment of adult patients with extensive-stage small cell lung cancer (ES-SCLC).

Select Important Safety Information

Serious and sometimes fatal adverse reactions occurred with TECENTRIQ treatment. Warnings and precautions include immune-mediated serious adverse reactions, including pneumonitis, hepatitis, colitis, endocrinopathies, and other immune-mediated adverse reactions. Other warnings and precautions include infections, infusion-related reactions, and embryo-fetal toxicity.

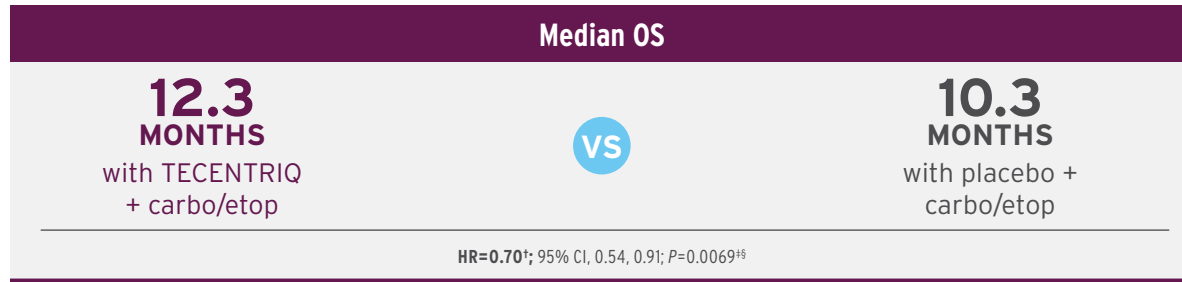
Please see full Prescribing Information and additional Important Safety Information throughout this brochure.

**TECENTRIQ[®]**
atezolizumab 840 mg / 1200 mg
INJECTION FOR IV USE
CONNECT WITH PURPOSE

Median follow-up of 13.9 months

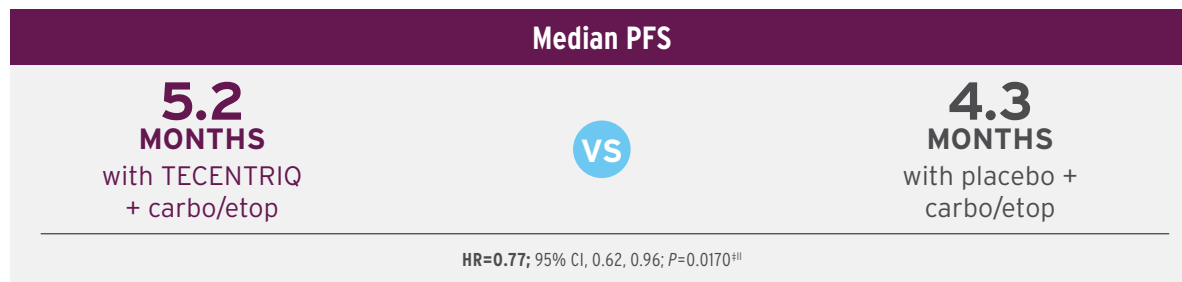
1 THE 1ST AND ONLY IMMUNOTHERAPY COMBINATION TO DEMONSTRATE SIGNIFICANTLY SUPERIOR OS AND PFS IN 1L ES-SCLC^{2,3}

30% reduction in the risk of death vs placebo + carbo/etop^{2,3}



*Flatiron EMR data ending March 2020.
†Analyses were stratified by gender and ECOG PS only.
‡Based on the stratified log-rank test.
§Based on OS interim analysis.
||As determined by investigator per RECIST v1.1.

Adding TECENTRIQ to carbo/etop significantly improved median PFS^{2,3}



IMpower133 was a Phase III, multicenter, randomized, double-blind, placebo-controlled trial in patients who had received no prior chemotherapy for ES-SCLC (N=403). Patients were randomized 1:1 to receive TECENTRIQ or placebo with carbo/etop. The major efficacy outcome measures were OS and investigator-assessed PFS. Select secondary efficacy measures included 12-month OS rate. During induction, patients were assigned to receive carboplatin AUC 5 mg/mL/min on Day 1 and etoposide 100 mg/m² on Days 1 to 3 of each 21-day cycle for a maximum of 4 cycles, with either TECENTRIQ 1200 mg or placebo intravenously (IV) on Day 1 of each cycle. The induction phase was followed by a maintenance phase during which patients received either TECENTRIQ or placebo every 3 weeks until disease progression or unacceptable toxicity. Randomization was stratified by gender, ECOG PS, and the presence of brain metastases; analyses were stratified by gender and ECOG PS only. This study excluded patients who had active or untreated CNS metastases; history of autoimmune disease; administration of a live, attenuated vaccine within 4 weeks prior to randomization; or administration of systemic immunosuppressive medications within 1 week prior to randomization. Prophylactic cranial irradiation was permitted during the maintenance phase, but thoracic radiation therapy was not.^{2,3}
AUC=area under the concentration-time curve; CNS=central nervous system.

Important Safety Information

Serious Adverse Reactions

Please refer to the full Prescribing Information for important dose management information specific to adverse reactions.

Immune-Mediated Pneumonitis

- Immune-mediated pneumonitis or interstitial lung disease, including fatal cases, have occurred with TECENTRIQ treatment
- In clinical studies of TECENTRIQ as a single agent, 2.5% of patients developed pneumonitis, including Grade 3 (0.6%), Grade 4 (0.1%), and Grade 5 (<0.1%) events
- In clinical studies of TECENTRIQ in combination with platinum-based chemotherapy for NSCLC and SCLC, pneumonitis occurred in 5.5% of patients, including Grades 3 to 4 (1.4%) events
- Monitor patients for signs and symptoms of pneumonitis. Evaluate patients with suspected pneumonitis with radiographic imaging. Administer corticosteroids followed by a taper. Withhold TECENTRIQ for Grade 2 and permanently discontinue for Grade 3 or 4 pneumonitis

Please see full Prescribing Information and additional Important Safety Information throughout this brochure.

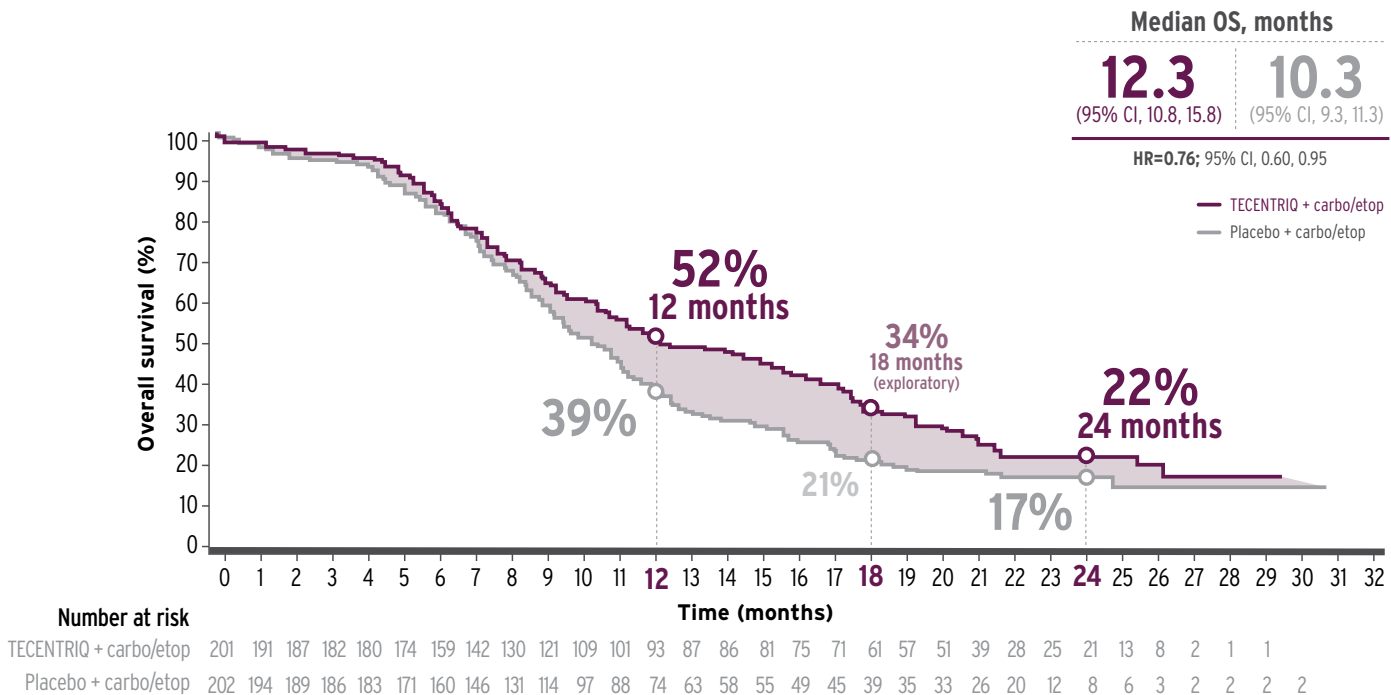
 **TECENTRIQ**[®]
atezolizumab 840 mg | 1200 mg
INJECTION FOR IV USE

2

Median follow-up of 22.9 months

NEARLY 2 YEARS OF CLINICAL DATA IN 1L ES-SCLC¹

Updated exploratory survival data based on nearly 2 years of follow-up



Landmark analyses were not powered to demonstrate statistically significant differences and no conclusions can be drawn from these analyses. The 12- and 24-month OS rates were prespecified secondary endpoints. The 18-month OS rate was not prespecified and is considered exploratory. The 24-month OS rates may be subject to change with longer follow-up. The safety observed in the updated analysis was generally consistent with the safety observed in the initial analysis.

Important Safety Information (cont'd)

Immune-Mediated Hepatitis

- Liver test abnormalities and immune-mediated hepatitis, including fatal cases, have occurred with TECENTRIQ treatment
- In clinical studies of TECENTRIQ as a single agent, hepatitis occurred in 9% of patients, including Grade 3 (2.3%), Grade 4 (0.6%), and Grade 5 (<0.1%) events
- In clinical studies of TECENTRIQ in combination with platinum-based chemotherapy for NSCLC and SCLC, hepatitis occurred in 14% of patients, including Grades 3 to 4 (4.1%) events



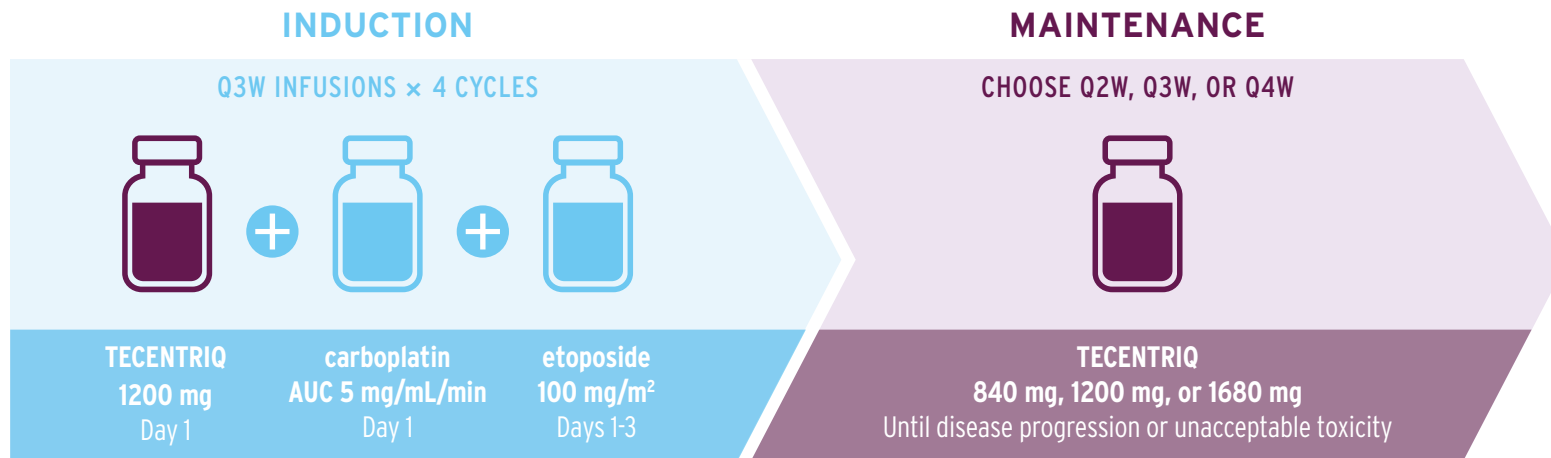
Please see full Prescribing Information and additional Important Safety Information throughout this brochure.

3

3 FLEXIBLE, CHEMO-FREE MAINTENANCE DOSING OPTIONS

Choose a maintenance infusion schedule that helps meet your patient's needs²

q4w q3w q2w



Dosing information for carbo/etop is based on the IMpower133 trial. TECENTRIQ was administered q3w in IMpower133. Visualization of vials is illustrative and does not represent actual vial usage.

Important Safety Information (cont'd)

Immune-Mediated Hepatitis (cont'd)

- Monitor patients for signs and symptoms of hepatitis, during and after discontinuation of TECENTRIQ, including clinical chemistry monitoring. Administer corticosteroids followed by a taper for immune-mediated hepatitis. Withhold TECENTRIQ for AST or ALT elevations more than 3 and up to 8 times the upper limit of normal or total bilirubin more than 1.5 and up to 3 times the upper limit of normal. Permanently discontinue TECENTRIQ for AST or ALT elevations more than 8 times the upper limit of normal or total bilirubin more than 3 times the upper limit of normal

Immune-Mediated Colitis

- Immune-mediated diarrhea or colitis have occurred with TECENTRIQ treatment
- In clinical studies of TECENTRIQ as a single agent, diarrhea or colitis occurred in 20% of patients, including Grade 3 (1.4%) events

Please see full Prescribing Information and additional Important Safety Information throughout this brochure.

TECENTRIQ[®]
atezolizumab 840 mg | 1200 mg
INJECTION FOR IV USE

3 FLEXIBLE, CHEMO-FREE MAINTENANCE DOSING OPTIONS (CONT'D)

- During induction phase, TECENTRIQ should be administered by IV infusion first, followed by carboplatin, then etoposide
- During maintenance phase, TECENTRIQ can be administered as 840 mg every 2 weeks, as 1200 mg every 3 weeks, or as 1680 mg every 4 weeks

TECENTRIQ can be administered in 30-minute infusions, if the initial 60-minute infusion is tolerated

Additional administration information²

- Do not administer TECENTRIQ as an IV push or bolus
- Do not co-administer other drugs through the same IV line
- Refer to the Prescribing Information for carboplatin and etoposide for recommended dosing information

Important Safety Information (cont'd)

Immune-Mediated Colitis (cont'd)

- In clinical studies of TECENTRIQ in combination with platinum-based chemotherapy for NSCLC and SCLC, diarrhea or colitis occurred in 29% of patients, including Grades 3 to 4 (4.3%) events
- Monitor patients for signs and symptoms of diarrhea or colitis. Withhold TECENTRIQ for Grade 2 or 3 and permanently discontinue for Grade 4 diarrhea or colitis

Immune-Mediated Endocrinopathies

- TECENTRIQ can cause immune-mediated endocrinopathies, including thyroid disorders; adrenal insufficiency; type 1 diabetes mellitus, including diabetic ketoacidosis; and hypophysitis/hypopituitarism
- Withhold TECENTRIQ for Grades 2 to 4 endocrinopathies



Please see full Prescribing Information and additional Important Safety Information throughout this brochure.

IMPORTANT SAFETY INFORMATION (CONT'D)

Immune-Mediated Endocrinopathies (cont'd)

- Thyroid Disorders
 - In clinical studies of TECENTRIQ as a single agent, hypothyroidism occurred in 4.6% of patients and hyperthyroidism occurred in 1.6% of patients
 - In clinical studies of TECENTRIQ in combination with platinum-based chemotherapy for NSCLC and SCLC, hypothyroidism occurred in 11% of patients, including Grades 3 to 4 (0.3%) events
 - Monitor thyroid function prior to and during treatment with TECENTRIQ. Initiate hormone replacement therapy or medical management of hyperthyroidism as clinically indicated
- Adrenal Insufficiency
 - In clinical studies of TECENTRIQ as a single agent, adrenal insufficiency occurred in 0.4% of patients, including Grade 3 (<0.1%) events
 - Monitor patients for clinical signs and symptoms of adrenal insufficiency. For Grade 2 or higher adrenal insufficiency, initiate corticosteroids and hormone replacement therapy as clinically indicated
- Type 1 Diabetes Mellitus
 - In clinical studies of TECENTRIQ as a single agent, type 1 diabetes mellitus occurred in <0.1% of patients
 - Monitor patients for hyperglycemia or other signs and symptoms of diabetes. Initiate treatment with insulin as clinically indicated
- Hypophysitis
 - In clinical studies of TECENTRIQ as a single agent, Grade 2 hypophysitis occurred in <0.1% of patients
 - For Grades 2 to 4 hypophysitis, initiate corticosteroids and hormone replacement therapy as clinically indicated
- The frequency and severity of hyperthyroidism, thyroiditis, adrenal insufficiency, diabetes mellitus, and hypophysitis were similar whether TECENTRIQ was given as a single agent or in combination with other antineoplastic drugs in NSCLC and SCLC

Other Immune-Mediated Adverse Reactions

- TECENTRIQ can cause severe and fatal immune-mediated adverse reactions. These immune-mediated reactions may involve any organ system

Other Immune-Mediated Adverse Reactions (cont'd)

- In clinical studies of TECENTRIQ as a single agent and in combination with platinum-based chemotherapy, or were reported in other products in this class, the immune-mediated adverse reactions occurring at an incidence of <1% were cardiac, dermatologic, gastrointestinal, general, hematological, musculoskeletal, neurological, ophthalmological, renal, and vascular
- For suspected Grade 2 immune-mediated adverse reactions, exclude other causes and initiate corticosteroids as clinically indicated. For severe (Grade 3 or 4) adverse reactions, withhold TECENTRIQ and administer corticosteroids. Permanently discontinue TECENTRIQ for Grade 4 immune-mediated adverse reactions involving a major organ
- Evaluate for Vogt-Koyanagi-Harada syndrome if uveitis occurs in combination with other immune-mediated adverse reactions

Infections

- TECENTRIQ can cause severe infections including fatal cases
- In clinical studies of TECENTRIQ as a single agent, infections occurred in 42% of patients, including Grade 3 (8.7%), Grade 4 (1.5%), and Grade 5 (1%) events
- The frequency and severity of infections were similar whether TECENTRIQ was given as a single agent or in combination with other antineoplastic drugs in NSCLC and SCLC
- Monitor patients for signs and symptoms of infection. For Grade 3 or higher infections, withhold TECENTRIQ and resume once clinically stable

Infusion-Related Reactions

- TECENTRIQ can cause severe or life-threatening infusion-related reactions
- In clinical studies of TECENTRIQ as a single agent, infusion-related reactions occurred in 1.3% of patients, including Grade 3 (0.2%) events
- The frequency and severity of infusion-related reactions were similar whether TECENTRIQ was given as a single agent or in combination with other antineoplastic drugs in NSCLC and SCLC
- Monitor patients for signs and symptoms of infusion-related reactions. Interrupt or slow the rate of infusion in patients with Grade 1 or 2 infusion-related reactions. Permanently discontinue TECENTRIQ in patients with Grade 3 or 4 infusion-related reactions



IMPORTANT SAFETY INFORMATION (CONT'D)

Embryo-Fetal Toxicity

- Based on its mechanism of action, TECENTRIQ can cause fetal harm when administered to a pregnant woman. Verify pregnancy status of females of reproductive potential prior to initiating TECENTRIQ. Advise females of reproductive potential of the potential risk to a fetus. Advise females of reproductive potential to use effective contraception during treatment with TECENTRIQ and for at least 5 months after the last dose

Nursing Mothers/Fertility

- Because of the potential for serious adverse reactions in breastfed infants from TECENTRIQ, advise female patients not to breastfeed while taking TECENTRIQ and for at least 5 months after the last dose
- Based on animal studies, TECENTRIQ may impair fertility in females of reproductive potential while receiving treatment

Most Common Adverse Reactions

The most common adverse reactions (rate $\geq 20\%$) in patients who received TECENTRIQ in combination with other antineoplastic drugs for NSCLC and SCLC were fatigue/asthenia (49%), nausea (38%), alopecia (35%), constipation (29%), diarrhea (28%), and decreased appetite (27%).

You may report side effects to the FDA at 1-800-FDA-1088 or www.fda.gov/medwatch. You may also report side effects to Genentech at 1-888-835-2555.

Please see full Prescribing Information for additional Important Safety Information.

References: **1.** Data on file. Genentech, Inc. **2.** TECENTRIQ Prescribing Information. Genentech, Inc. **3.** Horn L, Mansfield AS, Szczesna A, et al. First-line atezolizumab plus chemotherapy in extensive-stage small-cell lung cancer. *N Engl J Med.* 2018;379:2220-2229. **4.** Sabari JK, Lok BH, Laird JH, Poirier JT, Rudin CM. Unravelling the biology of SCLC: implications for therapy. *Nat Rev Clin Oncol.* 2017;14:549-561. **5.** Referenced with permission from the NCCN Clinical Practice Guidelines in Oncology (NCCN Guidelines[®]) for Small Cell Lung Cancer V.1.2021. © National Comprehensive Cancer Network, Inc. 2020. All rights reserved. Accessed August 14, 2020. To view the most recent and complete version of the guideline, go online to www.NCCN.org.

CHOOSE TECENTRIQ + CARBO/ETOP IN 1L ES-SCLC

- **1st and only** immunotherapy combination with significantly superior OS and PFS in 1L ES-SCLC, as demonstrated in the IMpower133 trial^{2,3}
 - 12.3 months median OS vs 10.3 months with placebo + carbo/etop (HR=0.70*; 95% CI, 0.54, 0.91; $P=0.0069$)^{2,3†‡}
 - 5.2 months median PFS vs 4.3 months with placebo + carbo/etop (HR=0.77; 95% CI, 0.62, 0.96; $P=0.0170$)^{2,3§}
- **Nearly 2 years** of exploratory follow-up clinical data¹
- **3 flexible, chemo-free** maintenance dosing options (q4w, q3w, and q2w)

NCCN
CATEGORY 1,
PREFERRED



Atezolizumab (TECENTRIQ) + carbo/etop is a preferred immunotherapy/chemotherapy option (Category 1) for first-line treatment of patients with ES-SCLC in the NCCN Clinical Practice Guidelines in Oncology (NCCN Guidelines[®]).^{5||¶}

*Analyses were stratified by gender and ECOG PS.

†Based on the stratified log-rank test.

‡Based on OS interim analysis.

§As determined by investigator per RECIST v1.1.

¶NCCN makes no warranties of any kind whatsoever regarding their content, use, or application, and disclaims any responsibility for their application or use in any way. See the NCCN Guidelines[®] for detailed recommendations, including other preferred options.

||Category 1: based upon high-level evidence, there is uniform NCCN consensus that the intervention is appropriate.

1L ES-SCLC is 1 of 5 TECENTRIQ APPROVALS IN LUNG CANCER

► Explore [TECENTRIQ-HCP.com/3reasons](https://www.tecentriq-hcp.com/3reasons) to learn more

Indication

TECENTRIQ, in combination with carboplatin and etoposide, is indicated for the first-line treatment of adult patients with extensive-stage small cell lung cancer (ES-SCLC).

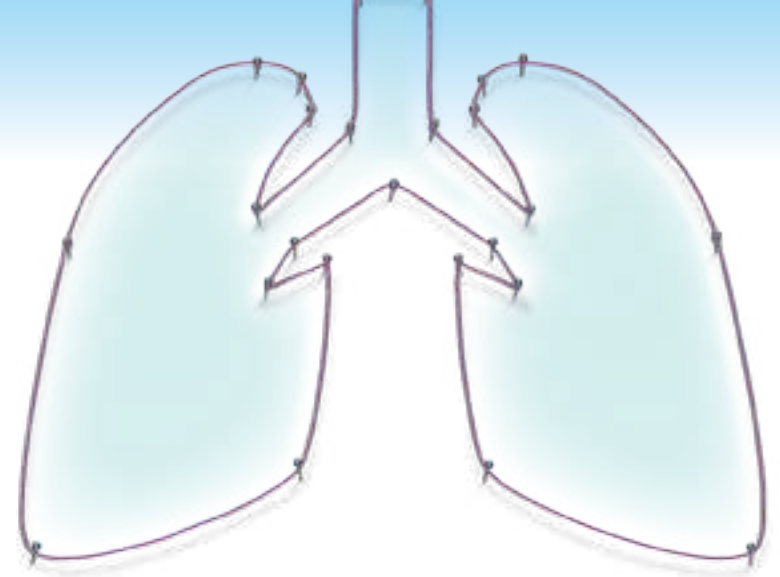
Select Important Safety Information

Serious and sometimes fatal adverse reactions occurred with TECENTRIQ treatment. Warnings and precautions include immune-mediated serious adverse reactions, including pneumonitis, hepatitis, colitis, endocrinopathies, and other immune-mediated adverse reactions. Other warnings and precautions include infections, infusion-related reactions, and embryo-fetal toxicity.

Please see full Prescribing Information and additional Important Safety Information throughout this brochure.

Genentech
A Member of the Roche Group

© 2020 Genentech USA, Inc. All rights reserved. M-US-00007114(v1.0)



 **TECENTRIQ[®]**
atezolizumab 840 mg | 1200 mg
INJECTION FOR IV USE
CONNECT WITH PURPOSE

HIGHLIGHTS OF PRESCRIBING INFORMATION

These highlights do not include all the information needed to use TECENTRIQ safely and effectively. See full prescribing information for TECENTRIQ.

TECENTRIQ® (atezolizumab) injection, for intravenous use
Initial U.S. Approval: 2016

RECENT MAJOR CHANGES

Indications and Usage, Non-Small Cell Lung Cancer (1.2)	5/2020
Indications and Usage, Triple-Negative Breast Cancer (1.3)	12/2020
Indications and Usage, Hepatocellular Carcinoma (1.5)	5/2020
Indications and Usage, Melanoma (1.6)	7/2020
Dosage and Administration (2.3)	11/2020
Warnings and Precautions (5.1, 5.2, 5.3, 5.5)	11/2020
Warnings and Precautions (5.4)	12/2020
Dosage and Administration (2.2)	02/2021

INDICATIONS AND USAGE

TECENTRIQ is a programmed death-ligand 1 (PD-L1) blocking antibody indicated:

Urothelial Carcinoma

- for the treatment of adult patients with locally advanced or metastatic urothelial carcinoma who:
 - are not eligible for cisplatin-containing chemotherapy and whose tumors express PD-L1 (PD-L1 stained tumor-infiltrating immune cells [IC] covering $\geq 5\%$ of the tumor area), as determined by an FDA-approved test, or
 - are not eligible for any platinum-containing chemotherapy regardless of PD-L1 status, or
 - have disease progression during or following any platinum-containing chemotherapy, or within 12 months of neoadjuvant or adjuvant chemotherapy. (1.1)

This indication is approved under accelerated approval based on tumor response rate and duration of response. Continued approval for this indication may be contingent upon verification and description of clinical benefit in a confirmatory trial(s). (1.1)

Non-Small Cell Lung Cancer (NSCLC)

- for the first-line treatment of adult patients with metastatic NSCLC whose tumors have high PD-L1 expression (PD-L1 stained $\geq 50\%$ of tumor cells [TC $\geq 50\%$] or PD-L1 stained tumor-infiltrating immune cells [IC] covering $\geq 10\%$ of the tumor area [IC $\geq 10\%$]), as determined by an FDA-approved test, with no EGFR or ALK genomic tumor aberrations. (1.2)
- in combination with bevacizumab, paclitaxel, and carboplatin, for the first-line treatment of adult patients with metastatic non-squamous NSCLC with no EGFR or ALK genomic tumor aberrations. (1.2)
- in combination with paclitaxel protein-bound and carboplatin for the first-line treatment of adult patients with metastatic non-squamous NSCLC with no EGFR or ALK genomic tumor aberrations (1.2)
- for the treatment of adult patients with metastatic NSCLC who have disease progression during or following platinum-containing chemotherapy. Patients with EGFR or ALK genomic tumor aberrations should have disease progression on FDA-approved therapy for NSCLC harboring these aberrations prior to receiving TECENTRIQ. (1.2)

Triple-Negative Breast Cancer (TNBC)

- in combination with paclitaxel protein-bound for the treatment of adult patients with unresectable locally advanced or metastatic TNBC whose tumors express PD-L1 (PD-L1 stained tumor-infiltrating immune cells [IC] of any intensity covering $\geq 1\%$ of the tumor area), as determined by an FDA approved test. This indication is approved under accelerated approval based on progression free survival. Continued approval for this indication may be contingent upon verification and description of clinical benefit in a confirmatory trial(s). (1.3)

Limitations of Use: TECENTRIQ is not indicated for use in combination with paclitaxel for the treatment of adult patients with unresectable locally advanced or metastatic TNBC (1.3, 5.4, 14.4).

Small Cell Lung Cancer (SCLC)

- in combination with carboplatin and etoposide, for the first-line treatment of adult patients with extensive-stage small cell lung cancer (ES-SCLC). (1.4)

Hepatocellular Carcinoma (HCC)

- in combination with bevacizumab for the treatment of patients with unresectable or metastatic HCC who have not received prior systemic therapy (1.5)

Melanoma

- in combination with cobimetinib and vemurafenib for the treatment of patients with BRAF V600 mutation-positive unresectable or metastatic melanoma. (1.6)

DOSAGE AND ADMINISTRATION

Administer TECENTRIQ intravenously over 60 minutes. If the first infusion is tolerated, all subsequent infusions may be delivered over 30 minutes.

Urothelial Carcinoma

- Administer TECENTRIQ as a single agent as 840 mg every 2 weeks, 1200 mg every 3 weeks, or 1680 mg every 4 weeks. (2.2)

NSCLC

- Administer TECENTRIQ as 840 mg every 2 weeks, 1200 mg every 3 weeks, or 1680 mg every 4 weeks. (2.2)
- When administering with chemotherapy with or without bevacizumab, administer TECENTRIQ prior to chemotherapy and bevacizumab when given on the same day.

Metastatic Treatment of TNBC

- Administer TECENTRIQ 840 mg every 2 weeks, 1200 mg every 3 weeks, or 1680 mg every 4 weeks. Administer TECENTRIQ prior to paclitaxel protein-bound when given on the same day. For each 28 day cycle, paclitaxel protein-bound is administered at 100mg/m² on days 1, 8, and 15. (2.2)

Small Cell Lung Cancer

- Administer TECENTRIQ as 840 mg every 2 weeks, 1200 mg every 3 weeks, or 1680 mg every 4 weeks. When administering with carboplatin and etoposide, administer TECENTRIQ prior to chemotherapy when given on the same day. (2.2)

Hepatocellular Carcinoma

- Administer TECENTRIQ as 840 mg every 2 weeks, 1200 mg every 3 weeks, or 1680 mg every 4 weeks. Administer TECENTRIQ prior to bevacizumab when given on the same day. Bevacizumab is administered at 15 mg/kg every 3 weeks. (2.2)

Melanoma

- Following completion of a 28 day cycle of cobimetinib and vemurafenib, administer TECENTRIQ 840 mg every 2 weeks, 1200 mg every 3 weeks, or 1680 mg every 4 weeks with cobimetinib 60 mg orally once daily (21 days on /7 days off) and vemurafenib 720 mg orally twice daily. (2.2)

DOSAGE FORMS AND STRENGTHS

Injection: 840 mg/14 mL (60 mg/mL) and 1200 mg/20 mL (60 mg/mL) solution in a single-dose vial (3)

CONTRAINDICATIONS

None. (4)

WARNINGS AND PRECAUTIONS

- Immune-Mediated Adverse Reactions (5.1)
 - Immune-mediated adverse reactions, which may be severe or fatal, can occur in any organ system or tissue, including the following: immune-mediated pneumonitis, immune-mediated colitis, immune-mediated hepatitis, immune-mediated endocrinopathies, immune-mediated dermatologic adverse reactions, immune-mediated nephritis and renal dysfunction, and solid organ transplant rejection.
 - Monitor for early identification and management. Evaluate liver enzymes, creatinine, and thyroid function at baseline and periodically during treatment.
 - Withhold or permanently discontinue based on severity and type of reaction.
- Infusion-Related Reactions: Interrupt, slow the rate of infusion, or permanently discontinue based on severity of infusion reactions. (5.2)
- Complications of Allogeneic HSCT: Fatal and other serious complications can occur in patient who receive allogeneic HSCT before or after being treated with a PD-1/PD-L1 blocking antibody. (5.3)
- Embryo-Fetal Toxicity: Can cause fetal harm. Advise females of reproductive potential of the potential risk to a fetus and use of effective contraception. (5.5, 8.1, 8.3)

ADVERSE REACTIONS

- Most common adverse reactions ($\geq 20\%$) with TECENTRIQ as a single-agent were fatigue/asthenia, nausea, cough, dyspnea, and decreased appetite. (6.1)
- Most common adverse reactions ($\geq 20\%$) with TECENTRIQ in combination with other antineoplastic drugs in patients with NSCLC and SCLC were fatigue/asthenia, nausea, alopecia, constipation, diarrhea, and decreased appetite (6.1)
- The most common adverse reactions ($\geq 20\%$) and laboratory abnormalities ($\geq 50\%$) with TECENTRIQ in combination with paclitaxel protein-bound in patients with TNBC were decreased hemoglobin, decreased leukocytes, decreased neutrophils, alopecia, decreased lymphocytes, peripheral neuropathies, fatigue, nausea, diarrhea, constipation, cough, headache, vomiting, and decreased appetite. (6.1)

- The most common adverse reactions ($\geq 20\%$) with TECENTRIQ in combination with bevacizumab in patients with HCC were hypertension, fatigue and proteinuria. (6.1)
- The most common adverse reactions ($\geq 20\%$) with TECENTRIQ in combination with cobimetinib and vemurafenib in patients with melanoma were rash, musculoskeletal pain, fatigue, hepatotoxicity, pyrexia, nausea, pruritus, edema, stomatitis, hypothyroidism, and photosensitivity reaction (6.1)

To report SUSPECTED ADVERSE REACTIONS, contact Genentech at 1-888-835-2555 or FDA at 1-800-FDA-1088 or www.fda.gov/medwatch.

USE IN SPECIFIC POPULATIONS

Lactation: Advise not to breastfeed. (8.2)

See 17 for PATIENT COUNSELING INFORMATION and Medication Guide.

Revised: 02/2021

FULL PRESCRIBING INFORMATION: CONTENTS*

1 INDICATIONS AND USAGE

- 1.1 Urothelial Carcinoma
- 1.2 Non-Small Cell Lung Cancer
- 1.3 Locally Advanced or Metastatic Triple-Negative Breast Cancer
- 1.4 Small Cell Lung Cancer
- 1.5 Hepatocellular Carcinoma
- 1.6 Melanoma

2 DOSAGE AND ADMINISTRATION

- 2.1 Patient Selection for Treatment of Urothelial Carcinoma, Triple-Negative Breast Cancer, Non-Small Cell Lung Cancer and Melanoma
- 2.2 Recommended Dosage
- 2.3 Dosage Modifications for Adverse Reactions
- 2.4 Preparation and Administration

3 DOSAGE FORMS AND STRENGTHS

4 CONTRAINDICATIONS

5 WARNINGS AND PRECAUTIONS

- 5.1 Severe and Fatal Immune-Mediated Adverse Reactions
- 5.2 Infusion-Related Reactions
- 5.3 Complications of Allogeneic HSCT after PD-1/PD-L1 Inhibitors
- 5.4 Increased Mortality in Patients with Metastatic TNBC when TECENTRIQ is Used with Paclitaxel
- 5.5 Embryo-Fetal Toxicity

6 ADVERSE REACTIONS

- 6.1 Clinical Trials Experience
- 6.2 Immunogenicity

8 USE IN SPECIFIC POPULATIONS

- 8.1 Pregnancy
- 8.2 Lactation
- 8.3 Females and Males of Reproductive Potential
- 8.4 Pediatric Use
- 8.5 Geriatric Use

11 DESCRIPTION

12 CLINICAL PHARMACOLOGY

- 12.1 Mechanism of Action
- 12.3 Pharmacokinetics

13 NONCLINICAL TOXICOLOGY

- 13.1 Carcinogenesis, Mutagenesis, Impairment of Fertility
- 13.2 Animal Toxicology and/or Pharmacology

14 CLINICAL STUDIES

- 14.1 Urothelial Carcinoma
- 14.2 Non-Small Cell Lung Cancer
- 14.3 Locally Advanced or Metastatic Triple-Negative Breast Cancer
- 14.4 Lack of Efficacy in Combination with Paclitaxel in Locally Advanced or Metastatic Triple-Negative Breast Cancer
- 14.5 Small Cell Lung Cancer
- 14.6 Hepatocellular Carcinoma
- 14.7 Melanoma

16 HOW SUPPLIED/STORAGE AND HANDLING

17 PATIENT COUNSELING INFORMATION

* Sections or subsections omitted from the full prescribing information are not listed

FULL PRESCRIBING INFORMATION

1 INDICATIONS AND USAGE

1.1 Urothelial Carcinoma

TECENTRIQ is indicated for the treatment of adult patients with locally advanced or metastatic urothelial carcinoma who:

- are not eligible for cisplatin-containing chemotherapy and whose tumors express PD-L1 (PD-L1 stained tumor-infiltrating immune cells [IC] covering $\geq 5\%$ of the tumor area), as determined by an FDA-approved test [*see Dosage and Administration (2.1)*], or
- are not eligible for any platinum-containing chemotherapy regardless of PD-L1 status, or
- have disease progression during or following any platinum-containing chemotherapy, or within 12 months of neoadjuvant or adjuvant chemotherapy

This indication is approved under accelerated approval based on tumor response rate and durability of response [*see Clinical Studies (14.1)*]. Continued approval for this indication may be contingent upon verification and description of clinical benefit in a confirmatory trial(s).

1.2 Non-Small Cell Lung Cancer

- TECENTRIQ, as a single agent, is indicated for the first-line treatment of adult patients with metastatic non-small cell lung cancer (NSCLC) whose tumors have high PD-L1 expression (PD-L1 stained $\geq 50\%$ of tumor cells [TC $\geq 50\%$] or PD-L1 stained tumor-infiltrating immune cells [IC] covering $\geq 10\%$ of the tumor area [IC $\geq 10\%$]), as determined by an FDA-approved test, with no EGFR or ALK genomic tumor aberrations.
- TECENTRIQ, in combination with bevacizumab, paclitaxel, and carboplatin, is indicated for the first-line treatment of adult patients with metastatic non-squamous NSCLC with no EGFR or ALK genomic tumor aberrations.
- TECENTRIQ, in combination with paclitaxel protein-bound and carboplatin, is indicated for the first-line treatment of adult patients with metastatic non-squamous NSCLC with no EGFR or ALK genomic tumor aberrations.
- TECENTRIQ, as a single-agent, is indicated for the treatment of adult patients with metastatic NSCLC who have disease progression during or following platinum-containing chemotherapy. Patients with EGFR or ALK genomic tumor aberrations should have disease progression on FDA-approved therapy for NSCLC harboring these aberrations prior to receiving TECENTRIQ.

1.3 Locally Advanced or Metastatic Triple-Negative Breast Cancer

TECENTRIQ, in combination with paclitaxel protein-bound, is indicated for the treatment of adult patients with unresectable locally advanced or metastatic triple-negative breast cancer (TNBC) whose tumors express PD-L1 (PD-L1 stained tumor-infiltrating immune cells [IC] of any intensity covering $\geq 1\%$ of the tumor area), as determined by an FDA-approved test [*see Dosage and Administration (2.1)*].

This indication is approved under accelerated approval based on progression free survival [*see Clinical Studies (14.3)*]. Continued approval for this indication may be contingent upon verification and description of clinical benefit in a confirmatory trial(s).

Limitations of Use

TECENTRIQ is not indicated for use in combination with paclitaxel for the treatment of adult patients with unresectable locally advanced or metastatic TNBC [see *Warnings and Precautions (5.4) and Clinical Studies (14.4)*].

1.4 Small Cell Lung Cancer

TECENTRIQ, in combination with carboplatin and etoposide, is indicated for the first-line treatment of adult patients with extensive-stage small cell lung cancer (ES-SCLC).

1.5 Hepatocellular Carcinoma

TECENTRIQ, in combination with bevacizumab, is indicated for the treatment of patients with unresectable or metastatic hepatocellular carcinoma (HCC) who have not received prior systemic therapy.

1.6 Melanoma

TECENTRIQ, in combination with cobimetinib and vemurafenib, is indicated for the treatment of patients with BRAF V600 mutation-positive unresectable or metastatic melanoma [see *Dosage and Administration (2.1)*].

2 DOSAGE AND ADMINISTRATION

2.1 Patient Selection for Treatment of Urothelial Carcinoma, Triple-Negative Breast Cancer, Non-Small Cell Lung Cancer and Melanoma

Select cisplatin-ineligible patients with previously untreated locally advanced or metastatic urothelial carcinoma for treatment with TECENTRIQ based on the PD-L1 expression on tumor-infiltrating immune cells [see *Clinical Studies (14.1)*].

Select patients with first-line metastatic non-small cell lung cancer for treatment with TECENTRIQ as a single agent based on the PD-L1 expression on tumor cells or on tumor infiltrating immune cells [see *Clinical Studies (14.2)*].

Select patients with locally advanced or metastatic triple-negative breast cancer for treatment with TECENTRIQ in combination with paclitaxel protein-bound based on the PD-L1 expression on tumor infiltrating immune cells [see *Clinical Studies (14.3)*]. Information on FDA-approved tests for the determination of PD-L1 expression in locally advanced or metastatic urothelial carcinoma, triple-negative breast cancer, or non-small cell lung cancer are available at: <http://www.fda.gov/CompanionDiagnostics>

Select patients with unresectable or metastatic melanoma for treatment with TECENTRIQ in combination with cobimetinib and vemurafenib after confirming the presence of a BRAF V600 mutation [see *Clinical Studies (14.5)*]. Information on FDA-approved tests for the detection of BRAF V600E and V600K mutations in melanoma is available at: <http://www.fda.gov/CompanionDiagnostics>. An FDA-approved test for the detection of other BRAF V600 mutations for this use is not currently available.

2.2 Recommended Dosage

The recommended dosages of TECENTRIQ as a single agent are presented in Table 1.

Table 1: Recommended Dosage of TECENTRIQ as a Single Agent

Indication	Recommended Dosage of TECENTRIQ*	Duration of Therapy
Urothelial Carcinoma	<ul style="list-style-type: none"> • 840 mg every 2 weeks or • 1200 mg every 3 weeks or • 1680 mg every 4 weeks 	Until disease progression or unacceptable toxicity
NSCLC		

* 60-minute intravenous infusion. If the first infusion is tolerated, all subsequent infusions may be delivered over 30 minutes.

The recommended dosages of TECENTRIQ in combination with other therapeutic agents are presented in Table 2. Refer to the respective Prescribing Information for each therapeutic agent administered in combination with TECENTRIQ for the recommended dosage information, as appropriate.

Table 2: Recommended Dosage of TECENTRIQ in Combination with Other Therapeutic Agents

Indication	Recommended Dosage of TECENTRIQ*	Duration of Therapy
NSCLC	<ul style="list-style-type: none"> • 840 mg every 2 weeks or • 1200 mg every 3 weeks or • 1680 mg every 4 weeks Administer TECENTRIQ prior to chemotherapy and bevacizumab when given on the same day.	Until disease progression or unacceptable toxicity
Locally Advanced or Metastatic TNBC	<ul style="list-style-type: none"> • 840 mg every 2 weeks or • 1200 mg every 3 weeks or • 1680 mg every 4 weeks Administer TECENTRIQ prior to paclitaxel protein-bound when given on the same day. For each 28 day cycle, paclitaxel protein-bound is administered at 100 mg/m ² on days 1, 8, and 15 until disease progression or unacceptable toxicity. TECENTRIQ and paclitaxel protein-bound may be discontinued for toxicity independently of each other. Do not substitute paclitaxel protein-bound with paclitaxel in combination with TECENTRIQ in clinical practice for metastatic TNBC outside of controlled trials [see <i>Warnings and Precautions (5.4)</i>].	
SCLC	<ul style="list-style-type: none"> • 840 mg every 2 weeks or • 1200 mg every 3 weeks or • 1680 mg every 4 weeks Administer TECENTRIQ prior to chemotherapy when given on the same day.	

HCC	<ul style="list-style-type: none"> • 840 mg every 2 weeks or • 1200 mg every 3 weeks or • 1680 mg every 4 weeks <p>Administer TECENTRIQ prior to bevacizumab when given on the same day. Bevacizumab is administered at 15 mg/kg every 3 weeks.</p>	
Melanoma	<ul style="list-style-type: none"> • 840 mg every 2 weeks or • 1200 mg every 3 weeks or • 1680 mg every 4 weeks <p>Administer TECENTRIQ with cobimetinib 60 mg orally once daily (21 days on and 7 days off) and vemurafenib 720 mg orally twice daily.</p> <p>Prior to initiating TECENTRIQ, patients should receive a 28 day treatment cycle of cobimetinib 60 mg orally once daily (21 days on and 7 days off) and vemurafenib 960 mg orally twice daily from Days 1-21 and vemurafenib 720 mg orally twice daily from Days 22-28.</p>	

* 60-minute intravenous infusion. If the first infusion is tolerated, all subsequent infusions may be delivered over 30 minutes.

2.3 Dosage Modifications for Adverse Reactions

No dose reduction for TECENTRIQ is recommended. In general, withhold TECENTRIQ for severe (Grade 3) immune-mediated adverse reactions. Permanently discontinue TECENTRIQ for life-threatening (Grade 4) immune-mediated adverse reactions, recurrent severe (Grade 3) immune-mediated reactions that require systemic immunosuppressive treatment, or an inability to reduce corticosteroid dose to 10 mg or less of prednisone or equivalent per day within 12 weeks of initiating steroids.

Dosage modifications for TECENTRIQ for adverse reactions that require management different from these general guidelines are summarized in Table 1.

Table 3: Recommended Dosage Modifications for Adverse Reactions

Adverse Reaction	Severity ^a	Dosage Modification
Immune-Mediated Adverse Reactions [see Warnings and Precautions (5.1)]		
Pneumonitis	Grade 2	Withhold ^b
	Grades 3 or 4	Permanently discontinue
Colitis	Grades 2 or 3	Withhold ^b
	Grade 4	Permanently discontinue
Hepatitis with no tumor involvement of the liver	AST or ALT increases to more than 3 and up to 8 times ULN or Total bilirubin increases to more than 1.5 and up to 3 times ULN	Withhold ^b

Adverse Reaction	Severity^a	Dosage Modification
	AST or ALT increases to more than 8 times ULN or Total bilirubin increases to more than 3 times ULN	Permanently discontinue
Hepatitis with tumor involvement of the liver ^c	Baseline AST or ALT is more than 1 and up to 3 times ULN and increases to more than 5 and up to 10 times ULN or Baseline AST or ALT is more than 3 and up to 5 times ULN and increases to more than 8 and up to 10 times ULN	Withhold ^b
	AST or ALT increases to more than 10 times ULN or Total bilirubin increases to more than 3 times ULN	Permanently discontinue
Endocrinopathies	Grades 3 or 4	Withhold until clinically stable or permanently discontinue depending on severity
Nephritis with Renal Dysfunction	Grades 2 or 3 increased blood creatinine	Withhold ^b
	Grade 4 increased blood creatinine	Permanently discontinue
Exfoliative Dermatologic Conditions	Suspected SJS, TEN, or DRESS	Withhold
	Confirmed SJS, TEN, or DRESS	Permanently discontinue
Myocarditis	Grades 2, 3, or 4	Permanently discontinue
Neurological Toxicities	Grade 2	Withhold ^b
	Grades 3 or 4	Permanently discontinue
Other Adverse Reactions		
Infusion-Related Reactions <i>[see Warnings and Precautions (5.2)]</i>	Grades 1 or 2	Interrupt or slow the rate of infusion
	Grades 3 or 4	Permanently discontinue

^{a.} Based on Common Terminology Criteria for Adverse Events (CTCAE), version 4.

^{b.} Resume in patients with complete or partial resolution (Grade 0 to 1) after corticosteroid taper. Permanently discontinue if no complete or partial resolution within 12 weeks of initiating steroids or inability to reduce prednisone to 10 mg per day or less (or equivalent) within 12 weeks of initiating steroids.

^{c.} If AST and ALT are less than or equal to ULN at baseline, withhold or permanently discontinue TECENTRIQ based on recommendations for hepatitis with no liver involvement.

ALT = alanine aminotransferase, AST = aspartate aminotransferase, ULN = upper limit normal, DRESS = Drug Rash with Eosinophilia and Systemic Symptoms, SJS = Stevens Johnson syndrome, TEN = toxic epidermal necrolysis

2.4 Preparation and Administration

Preparation

Visually inspect drug product for particulate matter and discoloration prior to administration, whenever solution and container permit. Discard the vial if the solution is cloudy, discolored, or visible particles are observed. Do not shake the vial.

Prepare the solution for infusion as follows:

- Select the appropriate vial(s) based on the prescribed dose.
- Withdraw the required volume of TECENTRIQ from the vial(s) using sterile needle and syringe.
- Dilute to a final concentration between 3.2 mg/mL and 16.8 mg/mL in a polyvinyl chloride (PVC), polyethylene (PE), or polyolefin (PO) infusion bag containing 0.9% Sodium Chloride Injection, USP.
- Dilute with only 0.9% Sodium Chloride Injection, USP.
- Mix diluted solution by gentle inversion. Do not shake.
- Discard used or empty vials of TECENTRIQ.

Storage of Infusion Solution

This product does not contain a preservative.

Administer immediately once prepared. If diluted TECENTRIQ infusion solution is not used immediately, store solution either:

- At room temperature for no more than 6 hours from the time of preparation. This includes room temperature storage of the infusion in the infusion bag and time for administration of the infusion, or
- Under refrigeration at 2°C to 8°C (36°F to 46°F) for no more than 24 hours from time of preparation.

Do not freeze.

Do not shake.

Administration

Administer the initial infusion over 60 minutes through an intravenous line with or without a sterile, non-pyrogenic, low-protein binding in-line filter (pore size of 0.2–0.22 micron). If the first infusion is tolerated, all subsequent infusions may be delivered over 30 minutes.

Do not coadminister other drugs through the same intravenous line.

Do not administer as an intravenous push or bolus.

3 DOSAGE FORMS AND STRENGTHS

Injection: 840 mg/14 mL (60 mg/mL) and 1200 mg/20 mL (60 mg/mL) colorless to slightly yellow solution in a single-dose vial.

4 CONTRAINDICATIONS

None.

5 WARNINGS AND PRECAUTIONS

5.1 Severe and Fatal Immune-Mediated Adverse Reactions

TECENTRIQ is a monoclonal antibody that belongs to a class of drugs that bind to either the programmed death-receptor 1 (PD-1) or the PD-ligand 1 (PD-L1), blocking the PD-1/PD-L1 pathway, thereby removing inhibition of the immune response, potentially breaking peripheral tolerance and inducing immune-mediated adverse reactions. Important immune-mediated adverse reactions listed under Warnings and Precautions may not include all possible severe and fatal immune-mediated reactions.

Immune-mediated adverse reactions, which may be severe or fatal, can occur in any organ system or tissue. Immune-mediated adverse reactions can occur at any time after starting a PD-1/PD-L1 blocking antibody. While immune-mediated adverse reactions usually manifest during treatment with PD-1/PD-L1 blocking antibodies, immune-mediated adverse reactions can also manifest after discontinuation of PD-1/PD-L1 blocking antibodies.

Early identification and management of immune-mediated adverse reactions are essential to ensure safe use of PD-1/PD-L1 blocking antibodies. Monitor patients closely for symptoms and signs that may be clinical manifestations of underlying immune-mediated adverse reactions. Evaluate liver enzymes, creatinine, and thyroid function at baseline and periodically during treatment. In cases of suspected immune-mediated adverse reactions, initiate appropriate workup to exclude alternative etiologies, including infection. Institute medical management promptly, including specialty consultation as appropriate.

Withhold or permanently discontinue TECENTRIQ depending on severity [*see Dosage and Administration (2.8)*]. In general, if TECENTRIQ requires interruption or discontinuation, administer systemic corticosteroid therapy (1 to 2 mg/kg/day prednisone or equivalent) until improvement to Grade 1 or less. Upon improvement to Grade 1 or less, initiate corticosteroid taper and continue to taper over at least 1 month. Consider administration of other systemic immunosuppressants in patients whose immune-mediated adverse reactions are not controlled with corticosteroid therapy.

Toxicity management guidelines for adverse reactions that do not necessarily require systemic steroids (e.g., endocrinopathies and dermatologic reactions) are discussed below.

Immune-Mediated Pneumonitis

TECENTRIQ can cause immune-mediated pneumonitis. The incidence of pneumonitis is higher in patients who have received prior thoracic radiation.

TECENTRIQ as a Single Agent:

Immune-mediated pneumonitis occurred in 3% (83/2616) of patients receiving TECENTRIQ as a single agent, including fatal (<0.1%), Grade 4 (0.2%), Grade 3 (0.8%), and Grade 2 (1.1%) adverse reactions. Pneumonitis led to permanent discontinuation of TECENTRIQ in 0.5% and withholding of TECENTRIQ in 1.5% of patients.

Systemic corticosteroids were required in 55% (46/83) of patients with pneumonitis. Pneumonitis resolved in 69% of the 83 patients. Of the 39 patients in whom TECENTRIQ was withheld for pneumonitis, 25 reinitiated TECENTRIQ after symptom improvement; of these, 4% had recurrence of pneumonitis.

TECENTRIQ in Combination with Cobimetinib and Vemurafenib:

Immune-mediated pneumonitis occurred in 13% (29/230) of patients receiving TECENTRIQ in combination with cobimetinib and vemurafenib, including Grade 3 (1.3%) and Grade 2 (7%) adverse reactions. Pneumonitis led to permanent discontinuation of TECENTRIQ in 2.6% and withholding of TECENTRIQ in 7.4% of patients.

Systemic corticosteroids were required in 55% (16/29) of patients with pneumonitis. Pneumonitis resolved in 97% of the 29 patients. Of the 17 patients in whom TECENTRIQ was withheld for pneumonitis, 10 reinitiated TECENTRIQ after symptom improvement; of these, 50% had recurrence of pneumonitis.

Immune-Mediated Colitis

TECENTRIQ can cause immune-mediated colitis. Colitis can present with diarrhea, abdominal pain, and lower gastrointestinal (GI) bleeding. Cytomegalovirus (CMV) infection/reactivation has been reported in patients with corticosteroid-refractory immune-mediated colitis. In cases of corticosteroid-refractory colitis, consider repeating infectious workup to exclude alternative etiologies.

TECENTRIQ as a Single Agent:

Immune-mediated colitis occurred in 1% (26/2616) of patients receiving TECENTRIQ as a single agent, including Grade 3 (0.5%) and Grade 2 (0.3%) adverse reactions. Colitis led to permanent discontinuation of TECENTRIQ in 0.2% and withholding of TECENTRIQ in 0.5% of patients.

Systemic corticosteroids were required in 50% (13/26) of patients with colitis. Colitis resolved in 73% of the 26 patients. Of the 12 patients in whom TECENTRIQ was withheld for colitis, 8 reinitiated treatment with TECENTRIQ after symptom improvement; of these, 25% had recurrence of colitis.

Immune-Mediated Hepatitis

TECENTRIQ can cause immune-mediated hepatitis.

Immune-mediated hepatitis occurred in 1.8% (48/2616) of patients receiving TECENTRIQ as a single agent, including fatal (<0.1%), Grade 4 (0.2%), Grade 3 (0.5%), and Grade 2 (0.5%) adverse reactions. Hepatitis led to permanent discontinuation of TECENTRIQ in 0.2% and withholding of TECENTRIQ in 0.2% of patients.

Systemic corticosteroids were required in 25% (12/48) of patients with hepatitis. Hepatitis resolved in 50% of the 48 patients. Of the 6 patients in whom TECENTRIQ was withheld for hepatitis, 4 reinitiated treatment with TECENTRIQ after symptom improvement; of these, none had recurrence of hepatitis.

TECENTRIQ in Combination with Cobimetinib and Vemurafenib:

Immune-mediated hepatitis occurred in 6.1% (14/230) of patients receiving TECENTRIQ in combination with cobimetinib and vemurafenib, including Grade 4 (1.3%), Grade 3 (1.7%) and Grade 2 (1.3%) adverse reactions. Hepatitis led to permanent discontinuation of TECENTRIQ in 2.2% and withholding of TECENTRIQ in 1.7% of patients.

Systemic corticosteroids were required in 50% (7/14) of patients with hepatitis. Hepatitis resolved in 93% of the 14 patients. Of the 4 patients in whom TECENTRIQ was withheld for hepatitis, 3 reinitiated TECENTRIQ after symptom improvement; of these, 33% had recurrence of hepatitis.

Immune-Mediated Endocrinopathies

Adrenal Insufficiency

TECENTRIQ can cause primary or secondary adrenal insufficiency. For Grade 2 or higher adrenal insufficiency, initiate symptomatic treatment, including hormone replacement as

clinically indicated. Withhold or permanently discontinue TECENTRIQ depending on severity [see *Dosage and Administration (2.8)*].

Adrenal insufficiency occurred in 0.4% (11/2616) of patients receiving TECENTRIQ as a single agent, including Grade 3 (<0.1%) and Grade 2 (0.2%) adverse reactions. Adrenal insufficiency led to permanent discontinuation of TECENTRIQ in one patient and withholding of TECENTRIQ in one patient.

Systemic corticosteroids were required in 81% (9/11) of patients with adrenal insufficiency, of these, 3 patients remained on systemic corticosteroids. The single patient in whom TECENTRIQ was withheld for adrenal insufficiency did not reinstate TECENTRIQ.

Hypophysitis

TECENTRIQ can cause immune-mediated hypophysitis. Hypophysitis can present with acute symptoms associated with mass effect such as headache, photophobia, or visual field cuts. Hypophysitis can cause hypopituitarism. Initiate hormone replacement as clinically indicated. Withhold or permanently discontinue TECENTRIQ depending on severity [see *Dosage and Administration (2.8)*].

Hypophysitis occurred in <0.1% (2/2616) of patients receiving TECENTRIQ as a single agent, including Grade 2 (1 patient, <0.1%) adverse reactions. Hypophysitis led to permanent discontinuation of TECENTRIQ in one patient and no patients required withholding of TECENTRIQ.

Systemic corticosteroids were required in 50% (1/2) of patients with hypophysitis. Hypophysitis did not resolve in these 2 patients.

Thyroid disorders

TECENTRIQ can cause immune-mediated thyroid disorders. Thyroiditis can present with or without endocrinopathy. Hypothyroidism can follow hyperthyroidism. Initiate hormone replacement for hypothyroidism or medical management for hyperthyroidism as clinically indicated. Withhold or permanently discontinue TECENTRIQ depending on severity [see *Dosage and Administration (2.8)*].

Thyroiditis:

Thyroiditis occurred in 0.2% (4/2616) of patients receiving TECENTRIQ as a single agent, including Grade 2 (<0.1%) adverse reactions. Thyroiditis did not lead to permanent discontinuation of TECENTRIQ in any of these patients, but led to withholding of TECENTRIQ in one patient.

Hormone replacement therapy was required in 75% (3/4) of patients with thyroiditis. Systemic corticosteroids were required in 25% (1/4) of patients with thyroiditis. Thyroiditis resolved in 50% of patients. The single patient in whom TECENTRIQ was withheld for thyroiditis reinstated TECENTRIQ; this patient did not have recurrence of thyroiditis.

Hyperthyroidism:

TECENTRIQ as a Single Agent:

Hyperthyroidism occurred in 0.8% (21/2616) of patients receiving TECENTRIQ as a single agent, including Grade 2 (0.4%) adverse reactions. Hyperthyroidism did not lead to permanent discontinuation of TECENTRIQ in any of these patients, but led to withholding of TECENTRIQ in 0.1% of patients.

Antithyroid therapy was required in 29% (6/21) of patients with hyperthyroidism. Of these 6 patients, the majority remained on antithyroid treatment. Of the 3 patients in whom

TECENTRIQ was withheld for hyperthyroidism, one patient reinitiated TECENTRIQ; this patient did not have recurrence of hyperthyroidism.

TECENTRIQ in Combination with Cobimetinib and Vemurafenib:

Hyperthyroidism occurred in 19% (43/230) of patients receiving TECENTRIQ in combination with cobimetinib and vemurafenib, including Grade 3 (0.9%) and Grade 2 (7.8%) adverse reactions. Hyperthyroidism led to permanent discontinuation of TECENTRIQ in 0.4% and withholding of TECENTRIQ in 10% of patients.

Antithyroid therapy was required in 53% (23/43) of patients with hyperthyroidism. Of these 23 patients, the majority remained on antithyroid treatment. Of the 24 patients in whom TECENTRIQ was withheld for hyperthyroidism, 18 patients reinitiated TECENTRIQ; of these, 28% had recurrence of hyperthyroidism.

Hypothyroidism:

TECENTRIQ as a Single Agent:

Hypothyroidism occurred in 4.9% (128/2616) of patients receiving TECENTRIQ as a single agent, including Grade 3 (0.2%) and Grade 2 (3.4%) adverse reactions. Hypothyroidism did not lead to permanent discontinuation of TECENTRIQ in any of these patients, but led to withholding of TECENTRIQ in 0.6% of patients.

Hormone replacement therapy was required in 81% (104/128) of patients with hypothyroidism. The majority of patients with hypothyroidism remained on thyroid hormone replacement. Of the 17 patients in whom TECENTRIQ was withheld for hypothyroidism, 8 reinitiated TECENTRIQ after symptom improvement.

TECENTRIQ in Combination with Platinum-based Chemotherapy:

Hypothyroidism occurred in 11% (277/2421) of patients with NSCLC and SCLC receiving TECENTRIQ in combination with platinum-based chemotherapy, including Grade 4 (<0.1%), Grade 3 (0.3%), and Grade 2 (5.7%) adverse reactions. Hypothyroidism led to permanent discontinuation of TECENTRIQ in 0.1% and withholding of TECENTRIQ in 1.6% of patients.

Hormone replacement therapy was required in 71% (198/277) of patients with hypothyroidism. The majority of patients with hypothyroidism remained on thyroid hormone replacement. Of the 39 patients in whom TECENTRIQ was withheld for hypothyroidism, 9 reinitiated TECENTRIQ after symptom improvement.

TECENTRIQ in Combination with Cobimetinib and Vemurafenib:

Hypothyroidism occurred in 26% (60/230) of patients receiving TECENTRIQ in combination with cobimetinib and vemurafenib, including Grade 2 (9.1%) adverse reactions. Hypothyroidism did not lead to permanent discontinuation of TECENTRIQ in any of these patients, but led to withholding of TECENTRIQ in 2.6% of patients.

Hormone replacement therapy was required in 52% (31/60) of patients with hypothyroidism. The majority of patients with hypothyroidism remained on thyroid hormone replacement. Of the 6 patients in whom TECENTRIQ was withheld for hypothyroidism, 4 reinitiated TECENTRIQ after symptom improvement. The majority of patients with hypothyroidism required long term thyroid replacement.

Type 1 Diabetes Mellitus, which can present with Diabetic Ketoacidosis

Monitor patients for hyperglycemia or other signs and symptoms of diabetes. Initiate treatment with insulin as clinically indicated. Withhold or permanently discontinue TECENTRIQ depending on severity [see *Dosage and Administration (2.8)*].

Type 1 diabetes mellitus occurred in 0.3% (7/2616) of patients receiving TECENTRIQ, including Grade 3 (0.2%) and Grade 2 (<0.1%) adverse reactions. Type 1 diabetes mellitus led to permanent discontinuation of TECENTRIQ in one patient and withholding of TECENTRIQ in two patients.

Treatment with insulin was required for all patients with confirmed Type 1 diabetes mellitus and insulin therapy was continued long-term. Of the 2 patients in whom TECENTRIQ was withheld for Type 1 diabetes mellitus, both re-initiated TECENTRIQ treatment.

Immune-Mediated Nephritis with Renal Dysfunction

TECENTRIQ can cause immune-mediated nephritis.

TECENTRIQ as a Single Agent:

Immune-mediated nephritis with renal dysfunction occurred in <0.1% (1/2616) of patients receiving TECENTRIQ as a single agent, and this adverse reaction was a Grade 3 (<0.1%) adverse reaction. Nephritis led to permanent discontinuation of TECENTRIQ in this patient.

This patient required systemic corticosteroids. In this patient, nephritis did not resolve.

TECENTRIQ in Combination with Cobimetinib and Vemurafenib:

Immune-mediated nephritis with renal dysfunction occurred in 1.3% (3/230) of patients receiving TECENTRIQ in combination with cobimetinib and vemurafenib, including Grade 2 (1.3%) adverse reactions. Nephritis led to permanent discontinuation of TECENTRIQ in 0.4% and withholding of TECENTRIQ in 0.9% of patients.

Systemic corticosteroids were required in 67% (2/3) of patients with nephritis. Nephritis resolved in all 3 of these patients. Of the 2 patients in whom TECENTRIQ was withheld for nephritis, both reinitiated TECENTRIQ after symptom improvement and neither had recurrence of nephritis.

Immune-Mediated Dermatologic Adverse Reactions

TECENTRIQ can cause immune-mediated rash or dermatitis. Exfoliative dermatitis, including Stevens-Johnson syndrome (SJS), DRESS, and toxic epidermal necrolysis (TEN), has occurred with PD-1/PD-L1 blocking antibodies. Topical emollients and/or topical corticosteroids may be adequate to treat mild to moderate non-exfoliative rashes. Withhold or permanently discontinue TECENTRIQ depending on severity [see *Dosage and Administration (2.8)*].

Immune-mediated dermatologic adverse reactions occurred in 0.6% (15/2616) of patients receiving TECENTRIQ as a single agent, including Grade 3 (<0.1%) and Grade 2 (0.2%) adverse reactions. Dermatologic adverse reactions led to permanent discontinuation of TECENTRIQ in 0.1% and withholding of TECENTRIQ in 0.2% of patients.

Systemic corticosteroids were required in 20% (3/15) of patients with dermatologic adverse reactions. Dermatologic adverse reactions resolved in 87% of the 15 patients. Of the 4 patients in whom TECENTRIQ was withheld for immune-mediated dermatologic adverse reactions, none re-initiated TECENTRIQ.

Other Immune-Mediated Adverse Reactions

The following clinically significant immune-mediated adverse reactions occurred at an incidence of < 1% (unless otherwise noted) in patients who received TECENTRIQ or were

reported with the use of other PD-1/PD-L1 blocking antibodies. Severe or fatal cases have been reported for some of these adverse reactions.

Cardiac/Vascular: Myocarditis, pericarditis, vasculitis

Nervous System: Meningitis, encephalitis, myelitis and demyelination, myasthenic syndrome/myasthenia gravis (including exacerbation), Guillain-Barré syndrome, nerve paresis, autoimmune neuropathy

Ocular: Uveitis, iritis, and other ocular inflammatory toxicities can occur. Some cases can be associated with retinal detachment. Various grades of visual impairment, including blindness, can occur. If uveitis occurs in combination with other immune-mediated adverse reactions, consider a Vogt-Koyanagi-Harada-like syndrome, as this may require treatment with systemic steroids to reduce the risk of permanent vision loss.

Gastrointestinal: Pancreatitis to include increases in serum amylase and lipase levels, gastritis, duodenitis.

Musculoskeletal and Connective Tissue: Myositis/polymyositis, rhabdomyolysis and associated sequelae including renal failure, arthritis, polymyalgia rheumatic.

Endocrine: Hypoparathyroidism

Other (Hematologic/Immune): Hemolytic anemia, aplastic anemia, hemophagocytic lymphohistiocytosis, systemic inflammatory response syndrome, histiocytic necrotizing lymphadenitis (Kikuchi lymphadenitis), sarcoidosis, immune thrombocytopenic purpura, solid organ transplant rejection.

5.2 Infusion-Related Reactions

TECENTRIQ can cause severe or life-threatening infusion-related reactions. Monitor for signs and symptoms of infusion-related reactions. Interrupt, slow the rate of, or permanently discontinue TECENTRIQ based on the severity [see *Dosage and Administration (2.8)*]. For Grade 1 or 2 infusion-related reactions, consider using pre-medications with subsequent doses.

In clinical studies enrolling 2616 patients with various cancers who received TECENTRIQ as a single-agent [see *Adverse Reactions (6.1)*], infusion-related reactions occurred in 1.3% of patients, including Grade 3 (0.2%). The frequency and severity of infusion-related reactions were similar whether TECENTRIQ was given as a single-agent in patients with various cancers, in combination with other antineoplastic drugs in NSCLC and SCLC, and across the recommended dose range (840 mg Q2W to 1680 mg Q4W).

5.3 Complications of Allogeneic HSCT after PD-1/PD-L1 Inhibitors

Fatal and other serious complications can occur in patients who receive allogeneic hematopoietic stem cell transplantation (HSCT) before or after being treated with a PD-1/PD-L1 blocking antibody. Transplant-related complications include hyperacute graft-versus-host disease (GVHD), acute GVHD, chronic GVHD, hepatic veno-occlusive disease (VOD) after reduced intensity conditioning, and steroid-requiring febrile syndrome (without an identified infectious cause). These complications may occur despite intervening therapy between PD-1/PD-L1 blockade and allogeneic HSCT.

Follow patients closely for evidence of transplant-related complications and intervene promptly. Consider the benefits versus risks of treatment with a PD-1/PD-L1 blocking antibody prior to or after an allogeneic HSCT.

5.4 Increased Mortality in Patients with Metastatic TNBC when TECENTRIQ is Used with Paclitaxel

In a randomized trial in patients with metastatic TNBC, an increase in the risk of death was observed in patients treated with TECENTRIQ plus paclitaxel compared with placebo and paclitaxel in the PD-L1-positive population. The efficacy of TECENTRIQ in combination with paclitaxel in patients with unresectable locally advanced or metastatic TNBC has not been demonstrated [*see Indications and Usage (1.3) and Clinical Studies (14.4)*].

Do not substitute paclitaxel protein-bound with paclitaxel in combination with TECENTRIQ in clinical practice for metastatic TNBC outside of controlled trials.

5.5 Embryo-Fetal Toxicity

Based on its mechanism of action, TECENTRIQ can cause fetal harm when administered to a pregnant woman. There are no available data on the use of TECENTRIQ in pregnant women. Animal studies have demonstrated that inhibition of the PD-L1/PD-1 pathway can lead to increased risk of immune-related rejection of the developing fetus resulting in fetal death.

Verify pregnancy status of females of reproductive potential prior to initiating TECENTRIQ. Advise females of reproductive potential of the potential risk to a fetus. Advise females of reproductive potential to use effective contraception during treatment with TECENTRIQ and for at least 5 months after the last dose [*see Use in Specific Populations (8.1, 8.3)*].

6 ADVERSE REACTIONS

The following clinically significant adverse reactions are described elsewhere in the labeling:

- Severe and Fatal Immune-Mediated Adverse Reactions [*see Warnings and Precautions (5.1)*]
- Infusion-Related Reactions [*see Warnings and Precautions (5.2)*]

6.1 Clinical Trials Experience

Because clinical trials are conducted under widely varying conditions, adverse reaction rates observed in the clinical trials of a drug cannot be directly compared to rates in the clinical trials of another drug and may not reflect the rates observed in practice.

The data described in WARNINGS AND PRECAUTIONS reflect exposure to TECENTRIQ as a single-agent in 2616 patients in two randomized, active-controlled studies (POPLAR, OAK) and four open-label, single arm studies (PCD4989g, IMvigora210, BIRCH, FIR) which enrolled 524 patients with metastatic urothelial carcinoma, 1636 patients with metastatic NSCLC, and 456 patients with other tumor types. TECENTRIQ was administered at a dose of 1200 mg intravenously every 3 weeks in all studies except PCD4989g. Among the 2616 patients who received a single-agent TECENTRIQ, 36% were exposed for longer than 6 months and 20% were exposed for longer than 12 months. Using the dataset described for patients who received TECENTRIQ as a single-agent, the most common adverse reactions in $\geq 20\%$ of patients were fatigue/asthenia (48%), decreased appetite (25%), nausea (24%), cough (22%), and dyspnea (22%).

In addition, the data reflect exposure to TECENTRIQ in combination with other antineoplastic drugs in 2421 patients with NSCLC (N = 2223) or SCLC (N = 198) enrolled in five randomized, active-controlled trials, including IMpower150, IMpower130 and IMpower133. Among the 2421 patients, 53% were exposed to TECENTRIQ for longer than 6 months and 29% were exposed to TECENTRIQ for longer than 12 months. Among the 2421 patients with NSCLC and SCLC who received TECENTRIQ in combination with other antineoplastic drugs, the most common

adverse reactions in $\geq 20\%$ of patients were fatigue/asthenia (49%), nausea (38%), alopecia (35%), constipation (29%), diarrhea (28%) and decreased appetite (27%).

The data also reflect exposure to TECENTRIQ administered in combination with cobimetinib and vemurafenib in 230 patients enrolled in IMspire150. Among the 230 patients, 62% were exposed to TECENTRIQ for longer than 6 months and 42% were exposed to TECENTRIQ for longer than 12 months.

Urothelial Carcinoma

Cisplatin-Ineligible Patients with Locally Advanced or Metastatic Urothelial Carcinoma

The safety of TECENTRIQ was evaluated in IMvigor 210 (Cohort 1), a multicenter, open-label, single-arm trial that included 119 patients with locally advanced or metastatic urothelial carcinoma who were ineligible for cisplatin-containing chemotherapy and were either previously untreated or had disease progression at least 12 months after neoadjuvant or adjuvant chemotherapy [see *Clinical Studies (14.1)*]. Patients received TECENTRIQ 1200 mg intravenously every 3 weeks until either unacceptable toxicity or disease progression. The median duration of exposure was 15 weeks (0 to 87 weeks).

Five patients (4.2%) who were treated with TECENTRIQ experienced one of the following events which led to death: sepsis, cardiac arrest, myocardial infarction, respiratory failure, or respiratory distress. One additional patient (0.8%) was experiencing herpetic meningoencephalitis and disease progression at the time of death.

Serious adverse reactions occurred in 37% of patients. The most frequent serious adverse reactions ($\geq 2\%$) were diarrhea, intestinal obstruction, sepsis, acute kidney injury, and renal failure.

TECENTRIQ was discontinued for adverse reactions in 4.2% of patients. The adverse reactions leading to discontinuation were diarrhea/colitis (1.7%), fatigue (0.8%), hypersensitivity (0.8%), and dyspnea (0.8%).

Adverse reactions leading to interruption occurred in 35% of patients; the most common ($\geq 1\%$) were intestinal obstruction, fatigue, diarrhea, urinary tract infection, infusion-related reaction, cough, abdominal pain, peripheral edema, pyrexia, respiratory tract infection, upper respiratory tract infection, creatinine increase, decreased appetite, hyponatremia, back pain, pruritus, and venous thromboembolism.

Tables 2 and 3 summarize the adverse reactions and Grades 3–4 selected laboratory abnormalities, respectively, in patients who received TECENTRIQ in IMvigor210 (Cohort 1).

Table 4: Adverse Reactions in $\geq 10\%$ of Patients with Urothelial Carcinoma in IMvigor210 (Cohort 1)

Adverse Reaction	TECENTRIQ N = 119	
	All Grades (%)	Grades 3–4 (%)
General		
Fatigue ¹	52	8
Peripheral edema ²	17	2
Pyrexia	14	0.8
Gastrointestinal		

Adverse Reaction	TECENTRIQ N = 119	
	All Grades (%)	Grades 3–4 (%)
Diarrhea ³	24	5
Nausea	22	2
Vomiting	16	0.8
Constipation	15	2
Abdominal pain ⁴	15	0.8
Metabolism and Nutrition		
Decreased appetite ⁵	24	3
Musculoskeletal and Connective Tissue		
Back/Neck pain	18	3
Arthralgia	13	0
Skin and Subcutaneous Tissue		
Pruritus	18	0.8
Rash ⁶	17	0.8
Infections		
Urinary tract infection ⁷	17	5
Respiratory, Thoracic, and Mediastinal		
Cough ⁸	14	0
Dyspnea ⁹	12	0

¹ Includes fatigue, asthenia, lethargy, and malaise

² Includes edema peripheral, scrotal edema, lymphedema, and edema

³ Includes diarrhea, colitis, frequent bowel movements, autoimmune colitis

⁴ Includes abdominal pain, upper abdominal pain, lower abdominal pain, and flank pain

⁵ Includes decreased appetite and early satiety

⁶ Includes rash, dermatitis, dermatitis acneiform, rash maculo-papular, rash erythematous, rash pruritic, rash macular, and rash papular

⁷ Includes urinary tract infection, urinary tract infection bacterial, cystitis, and urosepsis

⁸ Includes cough and productive cough

⁹ Includes dyspnea and exertional dyspnea

Table 5: Grades 3–4 Laboratory Abnormalities in ≥ 1% of Patients with Urothelial Carcinoma in IMvigor210 (Cohort 1)

Laboratory Abnormality	Grades 3–4 (%)
Chemistry	
Hyponatremia	15
Hyperglycemia	10
Increased Alkaline Phosphatase	7
Increased Creatinine	5

Laboratory Abnormality	Grades 3–4 (%)
Hypophosphatemia	4
Increased ALT	4
Increased AST	4
Hyperkalemia	3
Hypermagnesemia	3
Hyperbilirubinemia	3
Hematology	
Lymphopenia	9
Anemia	7

Graded per NCI CTCAE v4.0.

Previously Treated Locally Advanced or Metastatic Urothelial Carcinoma

The safety of TECENTRIQ was evaluated in IMvigor210 (Cohort 2), a multicenter, open-label, single-arm trial that included 310 patients with locally advanced or metastatic urothelial carcinoma who had disease progression during or following at least one platinum-containing chemotherapy regimen or who had disease progression within 12 months of treatment with a platinum-containing neoadjuvant or adjuvant chemotherapy regimen [see *Clinical Studies (14.1)*]. Patients received TECENTRIQ 1200 mg intravenously every 3 weeks until unacceptable toxicity or either radiographic or clinical progression. The median duration of exposure was 12.3 weeks (0.1 to 46 weeks).

Three patients (1%) who were treated with TECENTRIQ experienced one of the following events which led to death: sepsis, pneumonitis, or intestinal obstruction.

TECENTRIQ was discontinued for adverse reactions in 3.2% of patients. Sepsis led to discontinuation in 0.6% of patients.

Serious adverse reactions occurred in 45% of patients. The most frequent serious adverse reactions (> 2%) were urinary tract infection, hematuria, acute kidney injury, intestinal obstruction, pyrexia, venous thromboembolism, urinary obstruction, pneumonia, dyspnea, abdominal pain, sepsis, and confusional state.

Adverse reactions leading to interruption occurred in 27% of patients; the most common (> 1%) were liver enzyme increase, urinary tract infection, diarrhea, fatigue, confusional state, urinary obstruction, pyrexia, dyspnea, venous thromboembolism, and pneumonitis.

Tables 4 and 5 summarize the adverse reactions and Grades 3–4 selected laboratory abnormalities, respectively, in patients who received TECENTRIQ in IMvigor210 (Cohort 2).

Table 6: Adverse Reactions in ≥ 10% of Patients with Urothelial Carcinoma in IMvigor210 (Cohort 2)

Adverse Reaction	TECENTRIQ N = 310	
	All Grades (%)	Grades 3–4 (%)
General		
Fatigue	52	6
Pyrexia	21	1

Adverse Reaction	TECENTRIQ N = 310	
	All Grades (%)	Grades 3–4 (%)
Peripheral edema	18	1
Metabolism and Nutrition		
Decreased appetite	26	1
Gastrointestinal		
Nausea	25	2
Constipation	21	0.3
Diarrhea	18	1
Abdominal pain	17	4
Vomiting	17	1
Infections		
Urinary tract infection	22	9
Respiratory, Thoracic, and Mediastinal		
Dyspnea	16	4
Cough	14	0.3
Musculoskeletal and Connective Tissue		
Back/Neck pain	15	2
Arthralgia	14	1
Skin and Subcutaneous Tissue		
Rash	15	0.3
Pruritus	13	0.3
Renal and Urinary		
Hematuria	14	3

Table 7: Grades 3–4 Laboratory Abnormalities in $\geq 1\%$ of Patients with Urothelial Carcinoma in IMvigor210 (Cohort 2)

Laboratory Abnormality	Grades 3–4 (%)
Chemistry	
Hyponatremia	10
Hyperglycemia	5
Increased Alkaline Phosphatase	4
Increased Creatinine	3
Increased ALT	2
Increased AST	2

Laboratory Abnormality	Grades 3–4 (%)
Hypoalbuminemia	1
Hematology	
Lymphopenia	10
Anemia	8

Graded per NCI CTCAE v4.0.

Non-small Cell Lung Cancer (NSCLC)

IMpower110

The safety of TECENTRIQ was evaluated in IMpower110, a multicenter, international, randomized, open-label study in 549 chemotherapy-naïve patients with stage IV NSCLC, including those with EGFR or ALK genomic tumor aberrations. Patients received TECENTRIQ 1200 mg every 3 weeks (n=286) or platinum-based chemotherapy consisting of carboplatin or cisplatin with either pemetrexed or gemcitabine (n=263) until disease progression or unacceptable toxicity [see *Clinical Studies (14.2)*]. IMpower110 enrolled patients whose tumors express PD-L1 (PD-L1 stained $\geq 1\%$ of tumor cells [TC] or PD-L1 stained tumor-infiltrating immune cells [IC] covering $\geq 1\%$ of the tumor area). The median duration of exposure to TECENTRIQ was 5.3 months (0 to 33 months).

Fatal adverse reactions occurred in 3.8% of patients receiving TECENTRIQ; these included death (reported as unexplained death and death of unknown cause), aspiration, chronic obstructive pulmonary disease, pulmonary embolism, acute myocardial infarction, cardiac arrest, mechanical ileus, sepsis, cerebral infarction, and device occlusion (1 patient each).

Serious adverse reactions occurred in 28% of patients receiving TECENTRIQ. The most frequent serious adverse reactions ($>2\%$) were pneumonia (2.8%), chronic obstructive pulmonary disease (2.1%) and pneumonitis (2.1%)

TECENTRIQ was discontinued due to adverse reactions in 6% of patients; the most common adverse reactions (≥ 2 patients) leading to TECENTRIQ discontinuation were peripheral neuropathy and pneumonitis.

Adverse reactions leading to interruption of TECENTRIQ occurred in 26% of patients; the most common ($>1\%$) were ALT increased (2.1%), AST increased (2.1%), pneumonitis (2.1%), pyrexia (1.4%), pneumonia (1.4%) and upper respiratory tract infection (1.4%).

Tables 6 and 7 summarize adverse reactions and selected laboratory abnormalities in patients receiving TECENTRIQ in IMpower110.

Table 8: Adverse Reactions Occurring in $\geq 10\%$ of Patients with NSCLC Receiving TECENTRIQ in IMpower110

Adverse Reaction	TECENTRIQ N = 286		Platinum-Based Chemotherapy N = 263	
	All Grades (%)	Grades 3–4* (%)	All Grades* (%)	Grades 3–4 (%)
Gastrointestinal				
Nausea	14	0.3	34	1.9
Constipation	12	1.0	22	0.8
Diarrhea	11	0	12	0.8
General				

Fatigue/asthenia	25	1.4	34	4.2
Pyrexia	14	0	9	0.4
Metabolism and Nutrition				
Decreased appetite	15	0.7	19	0
Respiratory, Thoracic and Mediastinal				
Dyspnea	14	0.7	10	0
Cough	12	0.3	10	0

Graded per NCI CTCAE v4.0

Table 9: Laboratory Abnormalities Worsening from Baseline Occurring in $\geq 20\%$ of Patients Receiving TECENTRIQ in IMpower110

Laboratory Abnormality	TECENTRIQ		Platinum Based Chemotherapy	
	All Grades (%)	Grades 3–4 (%)	All Grades (%)	Grades 3–4 (%)
Hematology				
Anemia	69	1.8	94	20
Lymphopenia	47	9	59	17
Chemistry				
Hypoalbuminemia	48	0.4	39	2
Increased alkaline phosphatase	46	2.5	42	1.2
Hyponatremia	44	9	36	7
Increased ALT	38	3.2	32	0.8
Increased AST	36	3.2	32	0.8
Hyperkalemia	29	3.9	36	2.7
Hypocalcemia	24	1.4	24	2.7
Increased blood creatinine	24	0.7	33	1.5
Hypophosphatemia	23	3.6	21	2

Each test incidence is based on the number of patients who had at least one on-study laboratory measurement available: TECENTRIQ (range: 278-281); platinum-based chemotherapy (range:256-260). Graded per NCI CTCAE v4.0. Increased blood creatinine only includes patients with test results above the normal range.

IMpower150

The safety of TECENTRIQ with bevacizumab, paclitaxel and carboplatin was evaluated in IMpower150, a multicenter, international, randomized, open-label trial in which 393 chemotherapy-naïve patients with metastatic non-squamous NSCLC received TECENTRIQ 1200 mg with bevacizumab 15 mg/kg, paclitaxel 175 mg/m² or 200 mg/m², and carboplatin AUC 6 mg/mL/min intravenously every 3 weeks for a maximum of 4 or 6 cycles, followed by TECENTRIQ 1200 mg with bevacizumab 15 mg/kg intravenously every 3 weeks until disease progression or unacceptable toxicity [see *Clinical Studies (14.2)*]. The median duration of exposure to TECENTRIQ was 8.3 months in patients receiving TECENTRIQ with bevacizumab, paclitaxel, and carboplatin.

Fatal adverse reactions occurred in 6% of patients receiving TECENTRIQ; these included hemoptysis, febrile neutropenia, pulmonary embolism, pulmonary hemorrhage, death, cardiac arrest, cerebrovascular accident, pneumonia, aspiration pneumonia, chronic obstructive pulmonary disease, intracranial hemorrhage, intestinal angina, intestinal ischemia, intestinal obstruction and aortic dissection.

Serious adverse reactions occurred in 44%. The most frequent serious adverse reactions (>2%) were febrile neutropenia, pneumonia, diarrhea, and hemoptysis.

TECENTRIQ was discontinued due to adverse reactions in 15% of patients; the most common adverse reaction leading to discontinuation was pneumonitis (1.8%).

Adverse reactions leading to interruption of TECENTRIQ occurred in 48%; the most common (>1%) were neutropenia, thrombocytopenia, fatigue/asthenia, diarrhea, hypothyroidism, anemia, pneumonia, pyrexia, hyperthyroidism, febrile neutropenia, increased ALT, dyspnea, dehydration and proteinuria.

Tables 8 and 9 summarize adverse reactions and laboratory abnormalities in patients receiving TECENTRIQ with bevacizumab, paclitaxel, and carboplatin in IMpower150.

Table 10: Adverse Reactions Occurring in ≥15% of Patients with NSCLC Receiving TECENTRIQ in IMpower150

Adverse Reaction	TECENTRIQ with Bevacizumab, Paclitaxel, and Carboplatin N = 393		Bevacizumab, Paclitaxel and Carboplatin N = 394	
	All Grades (%)	Grades 3–4 (%)	All Grades (%)	Grades 3–4 (%)
Nervous System				
Neuropathy ¹	56	3	47	3
Headache	16	0.8	13	0
General				
Fatigue/Asthenia	50	6	46	6
Pyrexia	19	0.3	9	0.5
Skin and Subcutaneous Tissue				
Alopecia	48	0	46	0
Rash ²	23	2	10	0.3
Musculoskeletal and Connective Tissue				
Myalgia/Pain ³	42	3	34	2
Arthralgia	26	1	22	1
Gastrointestinal				
Nausea	39	4	32	2
Diarrhea ⁴	33	6	25	0.5
Constipation	30	0.3	23	0.3
Vomiting	19	2	18	1
Metabolism and Nutrition				
Decreased appetite	29	4	21	0.8
Vascular				
Hypertension	25	9	22	8
Respiratory				
Cough	20	0.8	19	0.3
Epistaxis	17	1	22	0.3
Renal				
Proteinuria ⁵	16	3	15	3

Graded per NCI CTCAE v4.0

¹ Includes neuropathy peripheral, peripheral sensory neuropathy, hypoesthesia, paraesthesia, dysesthesia, polyneuropathy.

² Includes rash, rash maculo-papular, drug eruption, eczema, eczema asteatotic, dermatitis, contact dermatitis, rash erythematous, rash macular, pruritic rash, seborrheic dermatitis, dermatitis psoriasiform.

³ Includes pain in extremity, musculoskeletal chest pain, musculoskeletal discomfort, neck pain, backpain, myalgia, and bone pain.

⁴ Includes diarrhea, gastroenteritis, colitis, enterocolitis.

⁵ Data based on Preferred Terms since laboratory data for proteinuria were not systematically collected.

Table 11: Laboratory Abnormalities Worsening from Baseline Occurring in ≥20% of Patients with NSCLC Receiving TECENTRIQ in IMpower150

Laboratory Abnormality	TECENTRIQ with Bevacizumab, Paclitaxel, and Carboplatin		Bevericizumab, Paclitaxel and Carboplatin	
	All Grades (%)	Grades 3-4 (%)	All Grades (%)	Grades 3-4 (%)
Hematology				
Anemia	83	10	83	9
Neutropenia	52	31	45	26
Lymphopenia	48	17	38	13
Chemistry				
Hyperglycemia	61	0	60	0
Increased BUN	52	NA ¹	44	NA ¹
Hypomagnesemia	42	2	36	1
Hypoalbuminemia	40	3	31	2
Increased AST	40	4	28	0.8
Hyponatremia	38	10	36	9
Increased Alkaline Phosphatase	37	2	32	1
Increased ALT	37	6	28	0.5
Increased TSH	30	NA ¹	20	NA ¹
Hyperkalemia	28	3	25	2
Increased Creatinine	28	1	19	2
Hypocalcemia	26	3	21	3
Hypophosphatemia	25	4	18	4
Hypokalemia	23	7	14	4
Hyperphosphatemia	25	NA ¹	19	NA ¹

Each test incidence is based on the number of patients who had both baseline and at least one on-study laboratory measurement available: TECENTRIQ with bevacizumab, paclitaxel, and carboplatin range: 337-380); bevacizumab, paclitaxel, and carboplatin (range: 337-382). Graded per NCI CTCAE v4.0

¹ NA = Not applicable. NCI CTCAE does not provide a Grades 3-4 definition for these laboratory abnormalities

IMpower130

The safety of TECENTRIQ with paclitaxel protein-bound and carboplatin was evaluated in IMpower130, a multicenter, international, randomized, open-label trial in which 473 chemotherapy-naïve patients with metastatic non-squamous NSCLC received TECENTRIQ 1200 mg and carboplatin AUC 6 mg/mL/min intravenously on Day 1 and paclitaxel protein-bound 100 mg/m² intravenously on Day 1, 8, and 15 of each 21-day cycle for a maximum of 4 or 6 cycles, followed by TECENTRIQ 1200 mg intravenously every 3 weeks until disease progression or unacceptability toxicity [see *Clinical Studies (14.2)*]. Among patients receiving TECENTRIQ, 55% were exposed for 6 months or longer and 3.5% were exposed for greater than one year.

Fatal adverse reactions occurred in 5.3% of patients receiving TECENTRIQ; these included pneumonia (1.1%), pulmonary embolism (0.8%), myocardial infarction (0.6%), cardiac arrest (0.4%) and pneumonitis (0.4%) and sepsis, septic shock, staphylococcal sepsis, aspiration,

respiratory distress, cardiorespiratory arrest, ventricular tachycardia, death (not otherwise specified), and hepatic cirrhosis (0.2% each).

Serious adverse reactions occurred in 51% of patients receiving TECENTRIQ. The most frequent serious adverse reactions ($\geq 2\%$) were pneumonia (6%), diarrhea (3%), lung infection (3.0%), pulmonary embolism (3%), chronic obstructive pulmonary disease exacerbation (2.5%), dyspnea (2.3%), and febrile neutropenia (1.9%).

TECENTRIQ was discontinued due to adverse reactions in 13% of patients; the most common adverse reactions leading to discontinuation were pneumonia (0.8%), pulmonary embolism (0.8%), fatigue (0.6%), dyspnea (0.6%), pneumonitis (0.6%), neutropenia (0.4%), nausea (0.4%), renal failure (0.4%), cardiac arrest (0.4%), and septic shock (0.4%).

Adverse reactions leading to interruption of TECENTRIQ occurred in 62% of patients; the most common ($>1\%$) were neutropenia, thrombocytopenia, anemia, diarrhea, fatigue/asthenia, pneumonia, dyspnea, pneumonitis, pyrexia, nausea, acute kidney injury, vomiting, pulmonary embolism, arthralgia, infusion-related reaction, abdominal pain, chronic obstructive pulmonary disease exacerbation, dehydration, and hypokalemia.

Tables 10 and 11 summarize adverse reactions and laboratory abnormalities in patients receiving TECENTRIQ with paclitaxel protein-bound and carboplatin in IMpower130.

Table 12: Adverse Reactions Occurring in $\geq 20\%$ of Patients with NSCLC Receiving TECENTRIQ in IMpower130

Adverse Reaction	TECENTRIQ with Paclitaxel Protein-Bound and Carboplatin N = 473		Paclitaxel Protein-Bound and Carboplatin N = 232	
	All Grades (%)	Grades 3–4 (%)	All Grades (%)	Grades 3–4 (%)
General				
Fatigue/Asthenia	61	11	60	8
Gastrointestinal				
Nausea	50	3.4	46	2.2
Diarrhea ¹	43	6	32	6
Constipation	36	1.1	31	0
Vomiting	27	2.7	19	2.2
Musculoskeletal and Connective Tissue				
Myalgia/Pain ²	38	3	22	0.4
Nervous System				
Neuropathy ³	33	2.5	28	2.2
Respiratory, Thoracic and Mediastinal				
Dyspnea ⁴	32	4.9	25	1.3
Cough	27	0.6	17	0
Skin and Subcutaneous Tissue				
Alopecia	32	0	27	0
Rash ⁵	20	0.6	11	0.9
Metabolism and Nutrition				

Adverse Reaction	TECENTRIQ with Paclitaxel Protein-Bound and Carboplatin N = 473		Paclitaxel Protein-Bound and Carboplatin N = 232	
	All Grades (%)	Grades 3–4 (%)	All Grades (%)	Grades 3–4 (%)
Decreased appetite	30	2.1	26	2.2

Graded per NCI CTCAE v4.0

¹ Includes diarrhea, colitis, and gastroenteritis

² Includes back pain, pain in extremity, myalgia, musculoskeletal chest pain, bone pain, neck pain and musculoskeletal discomfort

³ Includes neuropathy peripheral, peripheral sensory neuropathy, hypoesthesia, paresthesia, dysesthesia, polyneuropathy

⁴ Includes dyspnea, dyspnea exertional and wheezing

⁵ Includes rash, rash maculo-papular, eczema, rash pruritic, rash erythematous, dermatitis, dermatitis contact, drug eruption, seborrheic dermatitis and rash macular.

Table 13: Laboratory Abnormalities Worsening from Baseline Occurring in ≥20% of Patients Receiving TECENTRIQ in IMpower130

Laboratory Abnormality	TECENTRIQ with Paclitaxel Protein-Bound and Carboplatin N = 473		Paclitaxel Protein-Bound and Carboplatin N = 232	
	All Grades (%)	Grades 3–4 (%)	All Grades (%)	Grades 3–4 (%)
Hematology				
Anemia	92	33	87	25
Neutropenia	75	50	67	39
Thrombocytopenia	73	19	59	13
Lymphopenia	71	23	61	16
Chemistry				
Hyperglycemia	75	8	66	8
Hypomagnesemia	50	3.4	42	3.2
Hyponatremia	37	9	28	7
Hypoalbuminemia	35	1.3	31	0
Increased ALT	31	2.8	24	3.9
Hypocalcemia	31	2.6	27	1.8
Hypophosphatemia	29	6	20	3.2
Increased AST	28	2.2	24	1.8
Increased TSH	26	NA ¹	5	NA ¹
Hypokalemia	26	6	24	4.4
Increased Alkaline Phosphatase	25	2.6	22	1.3
Increased Blood Creatinine	23	2.8	16	0.4
Hyperphosphatemia	21	NA ¹	13	NA ¹

Each test incidence is based on the number of patients who had both baseline and at least one on-study laboratory measurement available: TECENTRIQ with paclitaxel protein bound and carboplatin (range: 423 - 467); paclitaxel protein bound and carboplatin (range: 218- 229). Graded per NCI CTCAE v4.0.

¹ NA = Not applicable. NCI CTCAE does not provide a Grades 3-4 definition for these laboratory abnormalities

Previously Treated Metastatic NSCLC

The safety of TECENTRIQ was evaluated in OAK, a multicenter, international, randomized, open-label trial in patients with metastatic NSCLC who progressed during or following a platinum-containing regimen, regardless of PD-L1 expression [see *Clinical Studies (14.2)*]. A total of 609 patients received TECENTRIQ 1200 mg intravenously every 3 weeks until unacceptable toxicity, radiographic progression, or clinical progression or docetaxel (n=578) 75 mg/m² intravenously every 3 weeks until unacceptable toxicity or disease progression. The study excluded patients with active or prior autoimmune disease or with medical conditions that required systemic corticosteroids. The median duration of exposure was 3.4 months (0 to 26 months) in TECENTRIQ-treated patients and 2.1 months (0 to 23 months) in docetaxel-treated patients.

The study population characteristics were: median age of 63 years (25 to 85 years), 46% age 65 years or older, 62% male, 71% White, 20% Asian, 68% former smoker, 16% current smoker, and 63% had ECOG performance status of 1.

Fatal adverse reactions occurred in 1.6% of patients; these included pneumonia, sepsis, septic shock, dyspnea, pulmonary hemorrhage, sudden death, myocardial ischemia or renal failure.

Serious adverse reactions occurred in 33.5% of patients. The most frequent serious adverse reactions (>1%) were pneumonia, sepsis, dyspnea, pleural effusion, pulmonary embolism, pyrexia and respiratory tract infection.

TECENTRIQ was discontinued due to adverse reactions in 8% of patients. The most common adverse reactions leading to TECENTRIQ discontinuation were fatigue, infections and dyspnea. Adverse reactions leading to interruption of TECENTRIQ occurred in 25% of patients; the most common (>1%) were pneumonia, liver function test abnormality, dyspnea, fatigue, pyrexia, and back pain.

Tables 12 and 13 summarize adverse reactions and laboratory abnormalities, respectively, in OAK.

Table 14: Adverse Reactions Occurring in ≥10% of Patients with NSCLC Receiving TECENTRIQ in OAK

Adverse Reaction	TECENTRIQ N = 609		Docetaxel N = 578	
	All Grades (%)	Grades 3-4 (%)	All Grades (%)	Grades 3-4 (%)
General				
Fatigue/Asthenia ¹	44	4	53	6
Pyrexia	18	<1	13	<1
Respiratory				
Cough ²	26	<1	21	<1
Dyspnea	22	2.8	21	2.6
Metabolism and Nutrition				
Decreased appetite	23	<1	24	1.6
Musculoskeletal				
Myalgia/Pain ³	20	1.3	20	<1
Arthralgia	12	0.5	10	0.2

Adverse Reaction	TECENTRIQ N = 609		Docetaxel N = 578	
	All Grades (%)	Grades 3-4 (%)	All Grades (%)	Grades 3-4 (%)
Gastrointestinal				
Nausea	18	<1	23	<1
Constipation	18	<1	14	<1
Diarrhea	16	<1	24	2
Skin				
Rash ⁴	12	<1	10	0

Graded per NCI CTCAE v4.0

¹ Includes fatigue and asthenia

² Includes cough and exertional cough

³ Includes musculoskeletal pain, musculoskeletal stiffness, musculoskeletal chest pain, myalgia

⁴ Includes rash, erythematous rash, generalized rash, maculopapular rash, papular rash, pruritic rash, pustular rash, pemphigoid

Table 15: Laboratory Abnormalities Worsening From Baseline Occurring in $\geq 20\%$ of Patients with NSCLC Receiving TECENTRIQ in OAK

Laboratory Abnormality	TECENTRIQ		Docetaxel	
	All Grades (%)	Grades 3-4 (%)	All Grades (%)	Grades 3-4 (%)
Hematology				
Anemia	67	3	82	7
Lymphocytopenia	49	14	60	21
Chemistry				
Hypoalbuminemia	48	4	50	3
Hyponatremia	42	7	31	6
Increased Alkaline Phosphatase	39	2	25	1
Increased AST	31	3	16	0.5
Increased ALT	27	3	14	0.5
Hypophosphatemia	27	5	23	4
Hypomagnesemia	26	1	21	1
Increased Creatinine	23	2	16	1

Each test incidence is based on the number of patients who had both baseline and at least one on-study laboratory measurement available: TECENTRIQ (range: 546–585) and docetaxel (range: 532–560). Graded according to NCI CTCAE version 4.0

Metastatic Triple Negative Breast Cancer (TNBC)

The safety of TECENTRIQ in combination with paclitaxel protein-bound was evaluated in IMpassion130, a multicenter, international, randomized, double-blinded placebo-controlled trial in patients with locally advanced or metastatic TNBC who have not received prior chemotherapy for metastatic disease [see *Clinical Studies (14.3)*]. Patients received TECENTRIQ 840 mg (n=452) or placebo (n=438) intravenously followed by paclitaxel protein-bound (100 mg/m²) intravenously. For each 28 day cycle, TECENTRIQ was administered on days 1 and 15 and paclitaxel protein-bound was administered on days 1, 8, and 15 until disease progression or unacceptable toxicity. In the safety-evaluable population, the median duration of exposure to TECENTRIQ was 5.5 months (range: 0-32 months) and paclitaxel protein-bound was 5.1

months (range: 0-31.5 months) in the TECENTRIQ and paclitaxel protein-bound arm. The median duration of exposure to placebo was 5.1 months (range: 0-25.1 months) and paclitaxel protein-bound was 5.0 months (range: 0-23.7 months) in the placebo and paclitaxel protein-bound arm.

Fatal adverse reactions occurred in 1.3% of patients in the TECENTRIQ and paclitaxel protein-bound arm; these included septic shock, mucosal inflammation, auto-immune hepatitis, aspiration, pneumonia, pulmonary embolism.

Serious adverse reactions occurred in 23% of patients. The most frequent serious adverse reactions were pneumonia (2%), urinary tract infection (1%), dyspnea (1%), and pyrexia (1%).

Adverse reactions leading to discontinuation of TECENTRIQ occurred in 6% (29/452) of patients in the TECENTRIQ and paclitaxel protein-bound arm. The most common adverse reaction leading to TECENTRIQ discontinuation was peripheral neuropathy (<1%).

Adverse reactions leading to interruption of TECENTRIQ occurred in 31% of patients; the most common ($\geq 2\%$) were neutropenia, neutrophil count decreased, hyperthyroidism, and pyrexia.

Immune-related adverse reactions requiring systemic corticosteroid therapy occurred in 13% (59/452) of patients in the TECENTRIQ and paclitaxel protein-bound arm.

Tables 14 and 15 summarize adverse reactions and selected laboratory abnormalities worsening from baseline in the TECENTRIQ treated patients.

Table 16: Adverse Reactions Occurring in $\geq 10\%$ of Patients with TNBC in IMpassion130

Adverse Reaction	TECENTRIQ with Paclitaxel Protein-Bound N = 452		Placebo with Paclitaxel Protein-Bound N = 438	
	All Grades (%)	Grades 3–4 (%)	All Grades (%)	Grades 3–4 (%)
Skin and Subcutaneous Tissue				
Alopecia	56	<1	58	<1
Rash	17	<1	16	<1
Pruritus	14	0	10	0
Nervous System				
Peripheral neuropathies ¹	47	9	44	5
Headache	23	<1	22	<1
Dysgeusia	14	0	14	0
Dizziness	14	0	11	0
General				
Fatigue	47	4	45	3.4
Pyrexia	19	<1	11	0
Peripheral Edema	15	<1	16	1.4
Asthenia	12	<1	11	<1
Gastrointestinal				
Nausea	46	1.1	38	1.8
Diarrhea	33	1.3	34	2.1
Constipation	25	<1	25	<1
Vomiting	20	<1	17	1.1

Adverse Reaction	TECENTRIQ with Paclitaxel Protein-Bound N = 452		Placebo with Paclitaxel Protein-Bound N = 438	
	All Grades (%)	Grades 3–4 (%)	All Grades (%)	Grades 3–4 (%)
Abdominal pain	10	<1	12	<1
Respiratory, Thoracic, and Mediastinal				
Cough	25	0	19	0
Dyspnea	16	<1	15	<1
Metabolism and Nutrition				
Decreased Appetite	20	<1	18	<1
Musculoskeletal and Connective Tissue				
Arthralgia	18	<1	16	<1
Back pain	15	1.3	13	<1
Myalgia	14	<1	15	<1
Pain in extremity	11	<1	10	<1
Endocrine				
Hypothyroidism	14	0	3.4	0
Infections				
Urinary tract infection	12	<1	11	<1
Upper respiratory tract infection	11	1.1	9	0
Nasopharyngitis	11	0	8	0

Graded per NCI CTCAE v4.0

¹ Includes peripheral neuropathy, peripheral sensory neuropathy, paresthesia, and polyneuropathy

Table 17: Laboratory Abnormalities Worsening from Baseline Occurring in ≥20% of Patients with TNBC in IMpassion130

Laboratory Abnormality	TECENTRIQ with Paclitaxel Protein-Bound		Placebo in combination with Paclitaxel Protein-Bound	
	All Grades (%)	Grades 3–4 (%)	All Grades (%)	Grades 3–4 (%)
Hematology				
Decreased Hemoglobin	79	3.8	73	3
Decreased Leukocytes	76	14	71	9
Decreased Neutrophils	58	13	54	13
Decreased Lymphocytes	54	13	47	8
Increased Prothrombin INR	25	<1	25	<1
Chemistry				
Increased ALT	43	6	34	2.7
Increased AST	42	4.9	34	3.4
Decreased Calcium	28	1.1	26	<1
Decreased Sodium	27	4.2	25	2.7
Decreased Albumin	27	<1	25	<1
Increased Alkaline Phosphatase	25	3.3	22	2.7

Laboratory Abnormality	TECENTRIQ with Paclitaxel Protein-Bound		Placebo in combination with Paclitaxel Protein-Bound	
	All Grades (%)	Grades 3–4 (%)	All Grades (%)	Grades 3–4 (%)
Decreased Phosphate	22	3.6	19	3.7
Increased Creatinine	21	<1	16	<1

Each test incidence is based on the number of patients who had at least one on-study laboratory measurement available: TECENTRIQ with paclitaxel protein-bound (range: 316-452); placebo with paclitaxel protein-bound (range: 299-438). Graded per NCI CTCAE v4.0, except for increased creatinine which only includes patients with creatinine increase based on upper limit of normal definition for grade 1 events (NCI CTCAE v5.0).

Small Cell Lung Cancer (SCLC)

The safety of TECENTRIQ with carboplatin and etoposide was evaluated in IMpower133, a randomized, multicenter, double-blind, placebo-controlled trial in which 198 patients with ES-SCLC received TECENTRIQ 1200 mg and carboplatin AUC 5 mg/mL/min on Day 1 and etoposide 100 mg/m² intravenously on Days 1, 2 and 3 of each 21-day cycle for a maximum of 4 cycles, followed by TECENTRIQ 1200 mg every 3 weeks until disease progression or unacceptable toxicity [see *Clinical Studies (14.4)*]. Among 198 patients receiving TECENTRIQ, 32% were exposed for 6 months or longer and 12% were exposed for 12 months or longer.

Fatal adverse reactions occurred in 2% of patients receiving TECENTRIQ. These included pneumonia, respiratory failure, neutropenia, and death (1 patient each).

Serious adverse reactions occurred in 37% of patients receiving TECENTRIQ. Serious adverse reactions in >2% were pneumonia (4.5%), neutropenia (3.5%), febrile neutropenia (2.5%), and thrombocytopenia (2.5%).

TECENTRIQ was discontinued due to adverse reactions in 11% of patients. The most frequent adverse reaction requiring permanent discontinuation in >2% of patients was infusion-related reactions (2.5%).

Adverse reactions leading to interruption of TECENTRIQ occurred in 59% of patients; the most common (>1%) were neutropenia (22%), anemia (9%), leukopenia (7%), thrombocytopenia (5%), fatigue (4.0%), infusion-related reaction (3.5%), pneumonia (2.0%), febrile neutropenia (1.5%), increased ALT (1.5%), and nausea (1.5%).

Tables 16 and 17 summarize adverse reactions and laboratory abnormalities, respectively, in patients who received TECENTRIQ with carboplatin and etoposide in IMpower133.

Table 18: Adverse Reactions Occurring in ≥20% of Patients with SCLC Receiving TECENTRIQ in IMpower133

Adverse Reaction	TECENTRIQ with Carboplatin and Etoposide N = 198		Placebo with Carboplatin and Etoposide N = 196	
	All Grades (%)	Grades 3–4 (%)	All Grades (%)	Grades 3–4 (%)
General				
Fatigue/asthenia	39	5	33	3
Gastrointestinal				
Nausea	38	1	33	1
Constipation	26	1	30	1
Vomiting	20	2	17	3
Skin and Subcutaneous Tissue				
Alopecia	37	0	35	0

Adverse Reaction	TECENTRIQ with Carboplatin and Etoposide N = 198		Placebo with Carboplatin and Etoposide N = 196	
	All Grades (%)	Grades 3–4 (%)	All Grades (%)	Grades 3–4 (%)
Metabolism and Nutrition				
Decreased appetite	27	1	18	0

Graded per NCI CTCAE v4.0

Table 19: Laboratory Abnormalities Worsening from Baseline Occurring in ≥20% of Patients with SCLC Receiving TECENTRIQ in IMpower133

Laboratory Abnormality	TECENTRIQ with Carboplatin and Etoposide		Placebo with Carboplatin and Etoposide	
	All Grades (%)	Grades 3–4 (%)	All Grades (%)	Grades 3–4 (%)
Hematology				
Anemia	94	17	93	19
Neutropenia	73	45	76	48
Thrombocytopenia	58	20	53	17
Lymphopenia	46	14	38	11
Chemistry				
Hyperglycemia	67	10	65	8
Increased Alkaline Phosphatase	38	1	35	2
Hyponatremia	34	15	33	11
Hypoalbuminemia	32	1	30	0
Decreased TSH ²	28	NA ¹	15	NA ¹
Hypomagnesemia	31	5	35	6
Hypocalcemia	26	3	28	5
Increased ALT	26	3	31	1
Increased AST	22	1	21	2
Increased Blood Creatinine	22	4	15	1
Hyperphosphatemia	21	NA ¹	23	NA ¹
Increased TSH ²	21	NA ¹	7	NA ¹

Each test incidence is based on the number of patients who had both baseline and at least one on-study laboratory measurement available: TECENTRIQ (range: 181-193); Placebo (range: 181-196). Graded per NCI CTCAE v4.0

¹ NA= Not applicable. ² TSH = thyroid-stimulating hormone. NCI CTCAE v4.0 does not include these laboratories.

Hepatocellular Carcinoma (HCC)

The safety of TECENTRIQ in combination with bevacizumab was evaluated in IMbrave150, a multicenter, international, randomized, open-label trial in patients with locally advanced or metastatic or unresectable hepatocellular carcinoma who have not received prior systemic treatment [see *Clinical Studies (14.5)*]. Patients received 1,200 mg of TECENTRIQ intravenously followed by 15 mg/kg bevacizumab (n=329) every 3 weeks, or 400 mg of sorafenib (n=156) given orally twice daily, until disease progression or unacceptable toxicity. The median duration of exposure to TECENTRIQ was 7.4 months (range: 0-16 months) and to bevacizumab was 6.9 months (range: 0-16 months).

Fatal adverse reactions occurred in 4.6% of patients in the TECENTRIQ and bevacizumab arm. The most common adverse reactions leading to death were gastrointestinal and esophageal varices hemorrhage (1.2%) and infections (1.2%).

Serious adverse reactions occurred in 38% of patients in the TECENTRIQ and bevacizumab arm. The most frequent serious adverse reactions ($\geq 2\%$) were gastrointestinal hemorrhage (7%), infections (6%), and pyrexia (2.1%).

Adverse reactions leading to discontinuation of TECENTRIQ occurred in 9% of patients in the TECENTRIQ and bevacizumab arm. The most common adverse reactions leading to TECENTRIQ discontinuation were hemorrhages (1.2%), including gastrointestinal, subarachnoid, and pulmonary hemorrhages; increased transaminases or bilirubin (1.2%); infusion-related reaction/cytokine release syndrome (0.9%); and autoimmune hepatitis (0.6%).

Adverse reactions leading to interruption of TECENTRIQ occurred in 41% of patients in the TECENTRIQ and bevacizumab arm; the most common ($\geq 2\%$) were liver function laboratory abnormalities including increased transaminases, bilirubin, or alkaline phosphatase (8%); infections (6%); gastrointestinal hemorrhages (3.6%); thrombocytopenia/decreased platelet count (3.6%); hyperthyroidism (2.7%); and pyrexia (2.1%).

Immune-related adverse reactions requiring systemic corticosteroid therapy occurred in 12% of patients in the TECENTRIQ and bevacizumab arm.

Tables 18 and 19 summarize adverse reactions and laboratory abnormalities, respectively, in patients who received TECENTRIQ and bevacizumab in IMbrave150.

Table 20: Adverse Reactions Occurring in $\geq 10\%$ of Patients with HCC Receiving TECENTRIQ in IMbrave150

Adverse Reaction	TECENTRIQ in combination with bevacizumab (n = 329)		Sorafenib (n=156)	
	All Grades ¹ (%)	Grades 3–4 ¹ (%)	All Grades ¹ (%)	Grades 3–4 ¹ (%)
Vascular Disorders				
Hypertension	30	15	24	12
General Disorders and Administration Site Conditions				
Fatigue/asthenia ¹	26	2	32	6
Pyrexia	18	0	10	0
Renal and Urinary Disorders				
Proteinuria	20	3	7	0.6
Investigations				
Weight Decreased	11	0	10	0
Skin and Subcutaneous Tissue Disorders				
Pruritus	19	0	10	0
Rash	12	0	17	2.6
Gastrointestinal Disorders				
Diarrhea	19	1.8	49	5
Constipation	13	0	14	0
Abdominal Pain	12	0	17	0
Nausea	12	0	16	0

Adverse Reaction	TECENTRIQ in combination with bevacizumab (n = 329)		Sorafenib (n=156)	
	All Grades ¹ (%)	Grades 3–4 ¹ (%)	All Grades ¹ (%)	Grades 3–4 ¹ (%)
Vomiting	10	0	8	0
Metabolism and Nutrition Disorders				
Decreased Appetite	18	1.2	24	3.8
Respiratory, Thoracic and Mediastinal Disorders				
Cough	12	0	10	0
Epistaxis	10	0	4.5	0
Injury, Poisoning and Procedural Complications				
Infusion Related Reaction	11	2.4	0	0

¹ Includes fatigue and asthenia

² Graded per NCI CTCAE v4.0

Table 21: Laboratory Abnormalities Worsening from Baseline Occurring in ≥20% of Patients with HCC Receiving TECENTRIQ in IMbrave150

Laboratory Abnormality	TECENTRIQ in combination with bevacizumab (n=329)		Sorafenib (n=156)	
	All Grades ¹ (%)	Grades 3–4 ¹ (%)	All Grades ¹ (%)	Grades 3–4 ¹ (%)
Chemistry				
Increased AST	86	16	90	16
Increased Alkaline Phosphatase	70	4	76	4.6
Increased ALT	62	8	70	4.6
Decreased Albumin	60	1.5	54	0.7
Decreased Sodium	54	13	49	9
Increased Glucose	48	9	43	4.6
Decreased Calcium	30	0.3	35	1.3
Decreased Phosphorus	26	4.7	58	16
Increased Potassium	23	1.9	16	2
Hypomagnesemia	22	0	22	0
Hematology				
Decreased Platelet	68	7	63	4.6
Decreased Lymphocytes	62	13	58	11
Decreased Hemoglobin	58	3.1	62	3.9
Increased Bilirubin	57	8	59	14
Decreased Leukocyte	32	3.4	29	1.3
Decreased Neutrophil	23	2.3	16	1.1

Each test incidence is based on the number of patients who had both baseline and at least one on-study laboratory measurement available: TECENTRIQ plus bevacizumab (222-323) and sorafenib (90-153)

NA = Not applicable.

¹ Graded per NCI CTCAE v4.0

Melanoma

The safety of TECENTRIQ, administered with cobimetinib and vemurafenib was evaluated in IMspire150, a double-blind, randomized (1:1), placebo-controlled study conducted in patients with previously untreated BRAF V600 mutation-positive metastatic or unresectable melanoma [see *Clinical Studies (14.5)*]. Patients received TECENTRIQ with cobimetinib and vemurafenib (N=230) or placebo with cobimetinib and vemurafenib (n=281).

Among the 230 patients who received TECENTRIQ administered with cobimetinib and vemurafenib, the median duration of exposure to TECENTRIQ was 9.2 months (range: 0-30 months) to cobimetinib was 10.0 months (range: 1-31 months) and to vemurafenib was 9.8 months (range: 1-31 months).

Fatal adverse reactions occurred in 3% of patients in the TECENTRIQ plus cobimetinib and vemurafenib arm. Adverse reactions leading to death were hepatic failure, fulminant hepatitis, sepsis, septic shock, pneumonia, and cardiac arrest.

Serious adverse reactions occurred in 45% of patients in the TECENTRIQ plus cobimetinib and vemurafenib arm. The most frequent ($\geq 2\%$) serious adverse reactions were hepatotoxicity (7%), pyrexia (6%), pneumonia (4.3%), malignant neoplasms (2.2%), and acute kidney injury (2.2%).

Adverse reactions leading to discontinuation of TECENTRIQ occurred in 21% of patients in the TECENTRIQ plus cobimetinib and vemurafenib arm. The most frequent ($\geq 2\%$) adverse reactions leading to TECENTRIQ discontinuation were increased ALT (2.2%) and pneumonitis (2.6%).

Adverse reactions leading to interruption of TECENTRIQ occurred in 68% of patients in the TECENTRIQ plus cobimetinib and vemurafenib arm. The most frequent ($\geq 2\%$) adverse reactions leading to TECENTRIQ interruption were pyrexia (14%), increased ALT (13%), hyperthyroidism (10%), increased AST (10%), increased lipase (9%), increased amylase (7%), pneumonitis (5%), increased CPK (4.3%), diarrhea (3.5%), pneumonia (3.5%), asthenia (3%), rash (3%), influenza (3%), arthralgia (2.6%), fatigue (2.2%), dyspnea (2.2%), cough (2.2%), peripheral edema (2.2%), uveitis (2.2%), bronchitis (2.2%), hypothyroidism (2.2%), and respiratory tract infection (2.2%).

Tables 20 and 21 summarizes the incidence of adverse reactions and laboratory abnormalities in Study IMspire150.

Table 22: Adverse Reactions Occurring in $\geq 10\%$ of Patients on the TECENTRIQ plus Cobimetinib and Vemurafenib Arm or the Placebo plus Cobimetinib and Vemurafenib Arm and at a Higher Incidence (Between Arm Difference of $\geq 5\%$ All Grades or $\geq 2\%$ Grades 3-4 TECENTRIQ in IMspire150)

Adverse Reaction	TECENTRIQ in combination with Cobimetinib and Vemurafenib (n=230)		Placebo with Cobimetinib and Vemurafenib (n=281)	
	All Grades (%)	Grade 3-4 (%)	All Grades (%)	Grade 3-4 (%)
Skin and Subcutaneous Tissue Disorders				
Rash ¹	75	27	72	23
Pruritus	26	< 1	17	<1
Photosensitivity reaction	21	<1	25	3.2

Adverse Reaction	TECENTRIQ in combination with Cobimetinib and Vemurafenib (n=230)		Placebo with Cobimetinib and Vemurafenib (n=281)	
	All Grades (%)	Grade 3-4 (%)	All Grades (%)	Grade 3-4 (%)
General Disorders and Administration Site Conditions				
Fatigue ²	51	3	45	1.8
Pyrexia ³	49	1.7	35	2.1
Edema ⁴	26	<1	21	0
Gastrointestinal Disorders				
Hepatotoxicity ⁵	50	21	36	13
Nausea	30	<1	32	2.5
Stomatitis ⁶	23	1.3	15	<1
Musculoskeletal and Connective Tissue Disorders				
Musculoskeletal pain ⁷	62	4.3	48	3.2
Endocrine Disorders				
Hypothyroidism ⁸	22	0	10	0
Hyperthyroidism	18	<1	8	0
Injury, Poisoning and Procedural Complications				
Infusion related reaction ⁹	10	2.6	8	<1
Respiratory, Thoracic and Mediastinal Disorders				
Pneumonitis ¹⁰	12	1.3	6	<1
Vascular Disorders				
Hypertension ¹¹	17	10	18	7

¹ Includes rash, rash maculo-papular, dermatitis acneiform, rash macular, rash erythematous, eczema, skin exfoliation, rash papular, rash pustular, palmar-plantar erythrodysesthesia syndrome, dermatitis, dermatitis contact, erythema multiforme, rash pruritic, drug eruption, nodular rash, dermatitis allergic, exfoliative rash, dermatitis exfoliative generalised and rash morbilliform

² Includes fatigue, asthenia and malaise

³ Includes pyrexia and hyperpyrexia

⁴ Includes edema peripheral, lymphoedema, oedema, face oedema, eyelid oedema, periorbital oedema, lip oedema and generalised oedema

⁵ Includes alanine aminotransferase increased, aspartate aminotransferase increased, blood bilirubin increased, transaminases increased, hepatitis, hepatic enzyme increased, hepatotoxicity, hypertransaminasaemia, bilirubin conjugated increased, hepatocellular injury, hyperbilirubinaemia, liver function test increased, hepatic failure, hepatitis fulminant and liver function test abnormal

⁶ Includes stomatitis, mucosal inflammation, aphthous ulcer, mouth ulceration, cheilitis and glossitis

⁷ Includes arthralgia, myalgia, pain in extremity, back pain, musculoskeletal pain, arthritis, neck pain, musculoskeletal chest pain, musculoskeletal stiffness, bone pain, spinal pain, immune-mediated arthritis, joint stiffness and non-cardiac chest pain

⁸ Includes hypothyroidism and blood thyroid stimulating hormone increased

⁹ Includes infusion related reaction and hypersensitivity

¹⁰ Includes pneumonitis and interstitial lung disease

¹¹ Includes hypertension, blood pressure increased, hypertensive crisis

Clinically important adverse reactions in < 10% of patients who received TECENTRIQ plus cobimetinib and vemurafenib were:

Cardiac Disorders: Arrhythmias, ejection fraction decreased, electrocardiogram QT prolonged

Eye Disorders: Uveitis

Gastrointestinal disorders: Pancreatitis

Infections and infestations: Pneumonia, urinary tract infection

Metabolism and nutrition disorders: Hyperglycemia

Nervous system Disorders: Dizziness, dysgeusia, syncope

Respiratory, thoracic and mediastinal disorders: Dyspnea, oropharyngeal pain

Table 23: Laboratory Abnormalities Worsening from Baseline Occurring in \geq 20% of Patients Receiving TECENTRIQ plus Cobimetinib and Vemurafenib Arm or the Placebo plus Cobimetinib and Vemurafenib Arm and at a Higher Incidence (Between Arm Difference of \geq 5% All Grades or \geq 2% Grades 3-4) in IMspire150

Laboratory Abnormality	TECENTRIQ in combination with Cobimetinib and Vemurafenib (n=230)		Placebo with Cobimetinib and Vemurafenib (n=281)	
	All Grades (%)	Grade 3-4 (%)	All Grades (%)	Grade 3-4 (%)
Hematology				
Decreased Lymphocytes	80	24	72	17
Decreased Hemoglobin	77	2.6	72	2.2
Decreased Platelet	34	1.3	24	0.4
Decreased Neutrophils	26	2.2	19	1.5
Chemistry				
Increased Creatine Kinase	88	22	81	18
Increased AST	80	13	68	6
Increased ALT	79	18	62	12
Increased Triacylglycerol Lipase	75	46	62	35
Increased Alkaline Phosphatase	73	6	63	2.9
Decreased Phosphorus	67	22	64	14
Increased Amylase	51	13	45	13
Increased Blood Urea Nitrogen	47	NA ¹	37	NA ¹
Decreased Albumin	43	0.9	34	1.5
Increased Bilirubin	42	3.1	33	0.7
Decreased Calcium	41	1.3	28	0
Decreased Sodium	40	5	34	7
Decreased Thyroid-Stimulating Hormone	38	NA ¹	23	NA ¹
Increased Thyroid-Stimulating Hormone ²	37	NA ¹	33	NA ¹
Decreased Potassium	36	5	22	4.3
Increased Triiodothyronine	33	NA ¹	18	NA ¹
Increased Free Thyroxine	32	NA ¹	21	NA ¹
Decreased Total Triiodothyronine	32	NA ¹	8	NA ¹
Increased Potassium	29	1.3	19	1.4
Decreased Triiodothyronine	27	NA ¹	21	NA ¹
Increased Sodium	20	0	13	0.4

Graded per NCI CTCAE v4.0.

Each test incidence is based on the number of patients who had both baseline and at least one on-study laboratory measurement available: TECENTRIQ plus cobimetinib and vemurafenib (28-277), placebo plus cobimetinib and vemurafenib arm (25-230).

¹ NA= Not applicable. NCI CTCAE v4.0 does not include these laboratories.

² Increased Thyroid Stimulating Hormone has a difference <5% (All Grades) between arms and is included for clinical completeness.

6.2 Immunogenicity

As with all therapeutic proteins, there is a potential for immunogenicity. The detection of antibody formation is highly dependent on the sensitivity and specificity of the assay. Additionally, the observed incidence of antibody (including neutralizing antibody) positivity in an assay may be influenced by several factors including assay methodology, sample handling, timing of sample collection, concomitant medications, and underlying disease. For these reasons, comparison of the incidence of antibodies to atezolizumab in the studies described above with the incidence of antibodies in other studies or to other products may be misleading.

Among 565 patients with NSCLC in OAK, 30% tested positive for treatment-emergent anti-drug antibodies (ADA) at one or more post-dose time points. The median onset time to ADA formation was 3 weeks. The ability of these binding ADA to neutralize atezolizumab is unknown. Patients who tested positive for treatment-emergent ADA also had decreased systemic atezolizumab exposure [see *Clinical Pharmacology (12.3)*]. Exploratory analyses showed that the subset of patients who were ADA positive by week 4 (21%; 118/560) appeared to have less efficacy (effect on overall survival) as compared to patients who tested negative for treatment-emergent ADA by week 4 [see *Clinical Studies (14.2)*]. The presence of ADA did not have a clinically significant effect on the incidence or severity of adverse reactions.

Among 275 patients with urothelial carcinoma in IMvigor210 (Cohort 2), 42% tested positive for treatment-emergent ADA at one or more post-dose time points. Among 111 patients in IMvigor210 (Cohort 1), 48% tested positive for treatment-emergent ADA at one or more post-dose time points. Patients who tested positive for treatment-emergent ADA also had decreased systemic atezolizumab exposures. The presence of ADA did not have a clinically significant effect on the incidence or severity of adverse reactions.

Among 364 ADA-evaluable patients with NSCLC who received TECENTRIQ with bevacizumab, paclitaxel and carboplatin in IMpower150, 36% (n=132) tested positive for treatment-emergent ADA at one or more post-dose time points and 83% of these 132 patients tested ADA positive prior to receiving the second dose of atezolizumab. The ability of these binding ADA to neutralize atezolizumab is unknown. Patients who tested positive for treatment-emergent ADA had lower systemic atezolizumab exposure as compared to patients who were ADA negative [see *Clinical Pharmacology (12.3)*]. The presence of ADA did not increase the incidence or severity of adverse reactions [see *Clinical Studies (14.2)*].

Among 434 patients with TNBC in IMpassion130, 13% tested positive for treatment-emergent ADA at one or more post-dose time points. Among 178 patients in PD-L1 positive subgroup with TNBC in IMpassion130, 12% tested positive for treatment-emergent ADA at one or more post-dose time points. Patients who tested positive for treatment-emergent ADA had decreased systemic atezolizumab exposure [see *Clinical Pharmacology (12.3)*]. There are insufficient numbers of patients in the PD-L1 positive subgroup with ADA to determine whether ADA alters the efficacy of atezolizumab. The presence of ADA did not have a clinically significant effect on the incidence or severity of adverse reactions.

Among 315 ADA-evaluable patients with HCC who received TECENTRIQ and bevacizumab in IMbrave150, 28% (n=88) tested positive for treatment-emergent ADA at one or more post-dose time points and 66% (58/88) of these 88 patients tested ADA-positive prior to receiving the third dose of TECENTRIQ. The ability of these binding ADA to neutralize atezolizumab is unknown. Patients who tested positive for treatment-emergent ADA had lower systemic atezolizumab exposure as compared to patients who were ADA-negative [see *Clinical Pharmacology (12.3)*]. Exploratory analyses showed that the subset of patients who were ADA-positive by week 6 (20%; 58/288) appeared to have less efficacy (effect on overall survival) as compared to patients who tested negative for treatment-emergent ADA by week 6; [see *Clinical Studies (14.5)*]. The

presence of ADA did not have a clinically significant effect on the incidence or severity of adverse reactions.

Among 218 ADA-evaluable patients with melanoma who received TECENTRIQ in combination with cobimetinib and vemurafenib in IMspire150, 13% (n=29) tested positive for treatment-emergent ADA at one or more post-dose time points. Patients who tested positive for treatment-emergent ADA had decreased systemic atezolizumab exposure [*see Clinical Pharmacology (12.3)*]. There are insufficient numbers of patients with positive ADA to determine whether ADA alters the efficacy or incidence or severity of adverse reactions.

8 USE IN SPECIFIC POPULATIONS

8.1 Pregnancy

Risk Summary

Based on its mechanism of action [*see Clinical Pharmacology (12.1)*], TECENTRIQ can cause fetal harm when administered to a pregnant woman. There are no available data on the use of TECENTRIQ in pregnant women.

Animal studies have demonstrated that inhibition of the PD-L1/PD-1 pathway can lead to increased risk of immune-related rejection of the developing fetus resulting in fetal death (*see Data*). Advise females of reproductive potential of the potential risk to a fetus.

In the U.S. general population, the estimated background risk of major birth defects and miscarriage in clinically recognized pregnancies is 2% to 4% and 15% to 20%, respectively.

Data

Animal Data

Animal reproduction studies have not been conducted with TECENTRIQ to evaluate its effect on reproduction and fetal development. A literature-based assessment of the effects on reproduction demonstrated that a central function of the PD-L1/PD-1 pathway is to preserve pregnancy by maintaining maternal immune tolerance to a fetus. Blockage of PD-L1 signaling has been shown in murine models of pregnancy to disrupt tolerance to a fetus and to result in an increase in fetal loss; therefore, potential risks of administering TECENTRIQ during pregnancy include increased rates of abortion or stillbirth. As reported in the literature, there were no malformations related to the blockade of PD-L1/PD-1 signaling in the offspring of these animals; however, immune-mediated disorders occurred in PD-1 and PD-L1 knockout mice. Based on its mechanism of action, fetal exposure to atezolizumab may increase the risk of developing immune-mediated disorders or altering the normal immune response.

8.2 Lactation

Risk Summary

There is no information regarding the presence of atezolizumab in human milk, the effects on the breastfed infant, or the effects on milk production. As human IgG is excreted in human milk, the potential for absorption and harm to the infant is unknown. Because of the potential for serious adverse reactions in breastfed infants from TECENTRIQ, advise women not to breastfeed during treatment and for at least 5 months after the last dose.

8.3 Females and Males of Reproductive Potential

Pregnancy Testing

Verify pregnancy status in females of reproductive potential prior to initiating TECENTRIQ [see *Use in Specific Populations (8.1)*].

Contraception

Females

Based on its mechanism of action, TECENTRIQ can cause fetal harm when administered to a pregnant woman [see *Use in Specific Populations (8.1)*]. Advise females of reproductive potential to use effective contraception during treatment with TECENTRIQ and for at least 5 months following the last dose.

Infertility

Females

Based on animal studies, TECENTRIQ may impair fertility in females of reproductive potential while receiving treatment [see *Nonclinical Toxicology (13.1)*].

8.4 Pediatric Use

The safety and effectiveness of TECENTRIQ have not been established in pediatric patients.

The safety and antitumor activity of TECENTRIQ were assessed but not established in a single-arm, multi-center, multi-cohort trial (NCT02541604) in 60 pediatric patients aged 7 months to <17 years with relapsed or progressive solid tumors and lymphomas. No new safety signals were observed in pediatric patients in this study.

In pediatric patients who received TECENTRIQ 15 mg/kg with a maximum dose of 1200 mg every 3 weeks, the steady-state exposure (AUC) of atezolizumab in pediatric patients aged 12 years or older was comparable to that in adult patients who received TECENTRIQ 1200 mg every 3 weeks, while the exposure trended lower in pediatric patients less than 12 years old.

8.5 Geriatric Use

Of 3040 patients with urothelial carcinoma, lung cancer, triple-negative breast cancer, hepatocellular carcinoma, and melanoma who were treated with TECENTRIQ in clinical studies, 43% were 65 years and over and 12% were 75 years and over. No overall differences in safety or effectiveness were observed between patients aged 65 years or older and younger patients.

11 DESCRIPTION

Atezolizumab is a programmed cell death ligand 1 (PD-L1) blocking antibody. Atezolizumab is an Fc-engineered, humanized, non-glycosylated IgG1 kappa immunoglobulin that has a calculated molecular mass of 145 kDa.

TECENTRIQ (atezolizumab) injection for intravenous use is a sterile, preservative-free, colorless to slightly yellow solution in single-dose vials. Each 20 mL vial contains 1200 mg of atezolizumab and is formulated in glacial acetic acid (16.5 mg), L-histidine (62 mg), polysorbate 20 (8 mg), and sucrose (821.6 mg), with a pH of 5.8. Each 14 mL vial contains 840 mg of atezolizumab and is formulated in glacial acetic acid (11.5 mg), L-histidine (43.4 mg), polysorbate 20 (5.6 mg), and sucrose (575.1 mg) with a pH of 5.8.

12 CLINICAL PHARMACOLOGY

12.1 Mechanism of Action

PD-L1 may be expressed on tumor cells and/or tumor infiltrating immune cells and can contribute to the inhibition of the anti-tumor immune response in the tumor microenvironment. Binding of PD-L1 to the PD-1 and B7.1 receptors found on T cells and antigen presenting cells suppresses cytotoxic T-cell activity, T-cell proliferation and cytokine production.

Atezolizumab is a monoclonal antibody that binds to PD-L1 and blocks its interactions with both PD-1 and B7.1 receptors. This releases the PD-L1/PD-1 mediated inhibition of the immune response, including activation of the anti-tumor immune response without inducing antibody-dependent cellular cytotoxicity. In syngeneic mouse tumor models, blocking PD-L1 activity resulted in decreased tumor growth.

In mouse models of cancer, dual inhibition of the PD-1/PD-L1 and MAPK pathways suppresses tumor growth and improves tumor immunogenicity through increased antigen presentation and T cell infiltration and activation compared to targeted therapy alone.

12.3 Pharmacokinetics

Patients' exposure to atezolizumab increased dose proportionally over the dose range of 1 mg/kg to 20 mg/kg, including a dose of 1200 mg administered every 3 weeks. The clearance (CV%) was 0.20 L/day (29%), the volume of distribution at steady state was 6.9 L, and the terminal half-life was 27 days. Steady state was achieved after 6 to 9 weeks following multiple doses. The systemic accumulation ratio for every 2 weeks administration and every 3 weeks administration was 3.3- and 1.9- fold, respectively. Atezolizumab clearance was found to decrease over time, with a mean maximal reduction (CV%) from baseline value of approximately 17% (41%); however, the decrease in clearance was not considered clinically relevant.

Specific Populations

Age (21 to 89 years), body weight, sex, albumin levels, tumor burden, region or race, mild or moderate renal impairment [estimated glomerular filtration rate (eGFR) 30 to 89 mL/min/1.73 m²], mild hepatic impairment (bilirubin ≤ ULN and AST > ULN or bilirubin > 1 to 1.5 × ULN and any AST), moderate hepatic impairment (bilirubin >1.5 to 3x ULN and any AST), level of PD-L1 expression, or performance status had no clinically significant effect on the systemic exposure of atezolizumab. Across clinical trials with TECENTRIQ, median atezolizumab clearance in patients who tested positive for treatment-emergent anti-drug antibodies (ADA) was 22% (range: 18% to 49%) higher as compared to atezolizumab clearance in patients who tested negative for treatment-emergent ADA.

Drug Interaction Studies

The drug interaction potential of atezolizumab is unknown.

13 NONCLINICAL TOXICOLOGY

13.1 Carcinogenesis, Mutagenesis, Impairment of Fertility

No studies have been performed to test the potential of atezolizumab for carcinogenicity or genotoxicity.

Animal fertility studies have not been conducted with atezolizumab; however, an assessment of the male and female reproductive organs was included in a 26-week, repeat-dose toxicity study in cynomolgus monkeys. Weekly administration of atezolizumab to female monkeys at the highest dose tested caused an irregular menstrual cycle pattern and a lack of newly formed corpora lutea in the ovaries. This effect occurred at an estimated AUC approximately 6 times the AUC in patients receiving the recommended dose and was reversible. There was no effect on the male monkey reproductive organs.

13.2 Animal Toxicology and/or Pharmacology

In animal models, inhibition of PD-L1/PD-1 signaling increased the severity of some infections and enhanced inflammatory responses. *M. tuberculosis*-infected PD-1 knockout mice exhibit markedly decreased survival compared with wild-type controls, which correlated with increased bacterial proliferation and inflammatory responses in these animals. PD-L1 and PD-1 knockout mice and mice receiving PD-L1 blocking antibody have also shown decreased survival following infection with lymphocytic choriomeningitis virus.

14 CLINICAL STUDIES

14.1 Urothelial Carcinoma

Cisplatin-Ineligible Patients with Locally Advanced or Metastatic Urothelial Carcinoma

The efficacy of TECENTRIQ was investigated in IMvigor210 (Cohort 1) (NCT02951767), a multicenter, open-label, single-arm trial that included 119 patients with locally advanced or metastatic urothelial carcinoma who were ineligible for cisplatin-containing chemotherapy and were either previously untreated or had disease progression at least 12 months after neoadjuvant or adjuvant chemotherapy. Patients were considered cisplatin-ineligible if they met any one of the following criteria at study entry: impaired renal function [creatinine clearance (CLcr) of 30 to 59 mL/min], Eastern Cooperative Oncology Group (ECOG) performance status (PS) of 2, hearing loss of ≥ 25 decibels (dB) at two contiguous frequencies, or Grades 2-4 peripheral neuropathy. This study excluded patients who had: a history of autoimmune disease; active or corticosteroid-dependent brain metastases; administration of a live, attenuated vaccine within 28 days prior to enrollment; or administration of systemic immunostimulatory agents within 6 weeks or systemic immunosuppressive medications within 2 weeks prior to enrollment. Patients received TECENTRIQ 1200 mg as an intravenous infusion every 3 weeks until unacceptable toxicity or disease progression. Tumor response assessments were conducted every 9 weeks for the first 54 weeks and every 12 weeks thereafter. Major efficacy outcome measures included confirmed overall response rate (ORR) as assessed by independent review facility (IRF) using Response Evaluation Criteria in Solid Tumors (RECIST v1.1), duration of response (DoR) and overall survival (OS).

In this study, the median age was 73 years, 81% were male, and 91% were White. Thirty-five percent of patients had non-bladder urothelial carcinoma and 66% had visceral metastases. Eighty percent of patients had an ECOG PS of 0 or 1. Reasons for ineligibility for cisplatin-containing chemotherapy were: 70% had impaired renal function, 20% had an ECOG PS of 2, 14% had a hearing loss of ≥ 25 dB, and 6% had Grades 2-4 peripheral neuropathy at baseline. Twenty percent of patients had disease progression following prior platinum-containing neoadjuvant or adjuvant chemotherapy.

Tumor specimens were evaluated prospectively using the VENTANA PD-L1 (SP142) Assay at a central laboratory, and the results were used to define subgroups for pre-specified analyses. Of the 119 patients, 27% were classified as having PD-L1 expression of $\geq 5\%$ (defined as PD-L1 stained tumor-infiltrating immune cells [IC] covering $\geq 5\%$ of the tumor area). The remaining 73% of patients were classified as having PD-L1 expression of $< 5\%$ (PD-L1 stained tumor-infiltrating IC covering $< 5\%$ of the tumor area).

Among the 32 patients with PD-L1 expression of $\geq 5\%$, median age was 67 years, 81% were male, 19% female, and 88% were White. Twenty-eight percent of patients had non-bladder urothelial carcinoma and 56% had visceral metastases. Seventy-two percent of patients had an ECOG PS of 0 or 1. Reasons for ineligibility for cisplatin-containing chemotherapy were: 66% had impaired renal function, 28% had an ECOG PS of 2, 16% had a hearing loss ≥ 25 dB, and

9% had Grades 2-4 peripheral neuropathy at baseline. Thirty-one percent of patients had disease progression following prior platinum-containing neoadjuvant or adjuvant chemotherapy.

Confirmed ORR in all patients and the two PD-L1 subgroups are summarized in Table 22. The median follow-up time for this study was 14.4 months. In 24 patients with disease progression following neoadjuvant or adjuvant therapy, the ORR was 33% (95% CI: 16%, 55%).

Table 24: Efficacy Results in IMvigor210 (Cohort 1)

	All Patients	PD-L1 Expression Subgroups	
	N = 119	PD-L1 Expression of < 5% in ICs ¹ N = 87	PD-L1 Expression of ≥ 5% in ICs ¹ N = 32
Number of IRF-assessed Confirmed Responders	28	19	9
ORR % (95% CI)	23.5% (16.2, 32.2)	21.8% (13.7, 32)	28.1% (13.8, 46.8)
Complete Response	6.7%	6.9%	6.3%
Partial Response	16.8%	14.9%	21.9%
Median DoR, months (range)	NR (3.7, 16.6+)	NR (3.7, 16.6+)	NR (8.1, 15.6+)
NR = Not reached + Denotes a censored value ¹ PD-L1 expression in tumor-infiltrating immune cells (ICs)			

IMvigor130 (NCT02807636) is an ongoing multicenter, randomized study in previously untreated patients with metastatic urothelial carcinoma who are eligible for platinum-containing chemotherapy. The study contains three arms: TECENTRIQ monotherapy, TECENTRIQ with platinum-based chemotherapy (i.e., cisplatin or carboplatin with gemcitabine), and platinum-based chemotherapy alone (comparator). Both cisplatin-eligible and cisplatin-ineligible patients are included in the study. Tumor specimens were evaluated prospectively using the VENTANA PD-L1 (SP142) Assay at a central laboratory. The independent Data Monitoring Committee (iDMC) for the study conducted a review of early data and found that patients classified as having PD-L1 expression of <5% when treated with TECENTRIQ monotherapy had decreased survival compared to those who received platinum-based chemotherapy. The iDMC recommended closure of the monotherapy arm to further accrual of patients with low PD-L1 expression, however, no other changes were recommended for the study, including any change of therapy for patients who had already been randomized to and were receiving treatment in the monotherapy arm.

Previously Treated Locally Advanced or Metastatic Urothelial Carcinoma

The efficacy of TECENTRIQ was investigated in IMvigor210 (Cohort 2) (NCT02108652), a multicenter, open-label, single-arm trial that included 310 patients with locally advanced or metastatic urothelial carcinoma who had disease progression during or following a platinum-containing chemotherapy regimen or who had disease progression within 12 months of treatment with a platinum-containing neoadjuvant or adjuvant chemotherapy regimen. This study excluded patients who had: a history of autoimmune disease, active or corticosteroid-dependent brain metastases, administration of a live, attenuated vaccine within 28 days prior to enrollment, or administration of systemic immunostimulatory agents within 6 weeks or systemic

immunosuppressive medications within 2 weeks prior to enrollment. Patients received TECENTRIQ 1200 mg intravenously every 3 weeks until unacceptable toxicity or either radiographic or clinical progression. Tumor response assessments were conducted every 9 weeks for the first 54 weeks and every 12 weeks thereafter. Major efficacy outcome measures included confirmed ORR as assessed by IRF using RECIST v1.1 and DoR.

In this study, the median age was 66 years, 78% were male, 91% of patients were White. Twenty-six percent had non-bladder urothelial carcinoma and 78% of patients had visceral metastases. Sixty-two percent of patients had an ECOG PS of 1 and 35% of patients had a baseline CLcr < 60 mL/min. Nineteen percent of patients had disease progression following prior platinum-containing neoadjuvant or adjuvant chemotherapy. Forty-one percent of patients had received 2 or more prior systemic regimens in the metastatic setting. Seventy-three percent of patients received prior cisplatin, 26% had prior carboplatin, and 1% were treated with other platinum-based regimens.

Tumor specimens were evaluated prospectively using the VENTANA PD-L1 (SP142) Assay at a central laboratory and the results were used to define subgroups for pre-specified analyses. Of the 310 patients, 32% were classified as having PD-L1 expression of $\geq 5\%$. The remaining 68% of patients were classified as having PD-L1 expression of < 5%.

Confirmed ORR and median DOR in all patients and the two PD-L1 subgroups are summarized in Table 23. The median follow-up time for this study was 32.9 months. In 59 patients with disease progression following neoadjuvant or adjuvant therapy, the ORR was 22.0% (95% CI: 12.3%, 34.7%).

Table 25: Efficacy Results in IMvigor210 (Cohort 2)

	All Patients	PD-L1 Expression Subgroups	
	N = 310	PD-L1 Expression of < 5% in IC ¹ N = 210	PD-L1 Expression of $\geq 5\%$ in IC ¹ N = 100
Number of IRF-assessed Confirmed Responders	46	20	26
ORR % (95% CI)	14.8% (11.2, 19.3)	9.5% (5.9, 14.3)	26% (17.7, 35.7)
Complete Response	5.5%	2.4%	12.0%
Partial Response	9.4%	7.1%	14.0%
Median DOR, months (range)	27.7 (2.1+, 33.4+)	20.9 (2.1+, 33.4+)	29.7 (4.2, 31.2+)
+ Denotes a censored value			
¹ PD-L1 expression in tumor-infiltrating immune cells (IC)			

14.2 Non-Small Cell Lung Cancer

Metastatic Chemotherapy-Naïve NSCLC with High PD-L1 Expression

The efficacy of TECENTRIQ was evaluated in IMpower110 (NCT02409342), a multicenter, international, randomized, open-label trial in patients with stage IV NSCLC whose tumors express PD-L1 (PD-L1 stained $\geq 1\%$ of tumor cells [TC $\geq 1\%$] or PD-L1 stained tumor-infiltrating immune cells [IC] covering $\geq 1\%$ of the tumor area [IC $\geq 1\%$]), who had received no prior chemotherapy for metastatic disease. PD-L1 tumor status was determined based on

immunohistochemistry (IHC) testing using the VENTANA PD-L1 (SP142) Assay. The evaluation of efficacy is based on the subgroup of patients with high PD-L1 expression (TC \geq 50% or IC \geq 10%), excluding those with EGFR or ALK genomic tumor aberrations. The trial excluded patients with a history of autoimmune disease, administration of a live attenuated vaccine within 28 days prior to randomization, active or untreated CNS metastases, administration of systemic immunostimulatory agents within 4 weeks or systemic immunosuppressive medications within 2 weeks prior to randomization.

Randomization was stratified by sex, ECOG performance status, histology (non-squamous vs. squamous) and PD-L1 expression (TC \geq 1% and any IC vs. TC $<$ 1% and IC \geq 1%). Patients were randomized (1:1) to receive one of the following treatment arms:

- Arm A: TECENTRIQ 1200 mg every 3 weeks until disease progression or unacceptable toxicity
- Arm B: Platinum-based chemotherapy

Arm B platinum-based chemotherapy regimens for non-squamous NSCLC consisted of cisplatin (75 mg/m²) and pemetrexed (500 mg/m²) OR carboplatin (AUC 6 mg/mL/min) and pemetrexed (500 mg/m²) on Day 1 of each 21-day cycle for a maximum of 4 or 6 cycles followed by pemetrexed 500 mg/m² until disease progression or unacceptable toxicity.

Arm B platinum-based chemotherapy regimens for squamous NSCLC consisted of cisplatin (75 mg/m²) on Day 1 with gemcitabine (1250 mg/m²) on Days 1 and 8 of each 21-day cycle OR carboplatin (AUC 5 mg/mL/min) on Day 1 with gemcitabine (1000 mg/m²) on Days 1 and 8 of each 21-day cycle for a maximum of 4 or 6 cycles followed by best supportive care until disease progression or unacceptable toxicity.

Administration of TECENTRIQ was permitted beyond RECIST-defined disease progression. Tumor assessments were conducted every 6 weeks for the first 48 weeks following Cycle 1, Day 1 and then every 9 weeks thereafter. Tumor specimens were evaluated prospectively using the VENTANA PD-L1 (SP142) Assay at a central laboratory and the results were used to define subgroups for pre-specified analyses.

The major efficacy outcome measure was overall survival (OS) sequentially tested in the following subgroups of patients, excluding those with EGFR or ALK genomic tumor aberrations: TC \geq 50% or IC \geq 10%; TC \geq 5% or IC \geq 5%; and TC \geq 1% or IC \geq 1%.

Among the 205 chemotherapy-naïve patients with stage IV NSCLC with high PD-L1 expression (TC \geq 50% or IC \geq 10%) excluding those with EGFR or ALK genomic tumor aberrations, the median age was 65.0 years (range: 33 to 87), and 70% of patients were male. The majority of patients were White (82%) and Asian (17%). Baseline ECOG performance status was 0 (36%) or 1 (64%); 88% were current or previous smokers; and 76% of patients had non-squamous disease while 24% of patients had squamous disease.

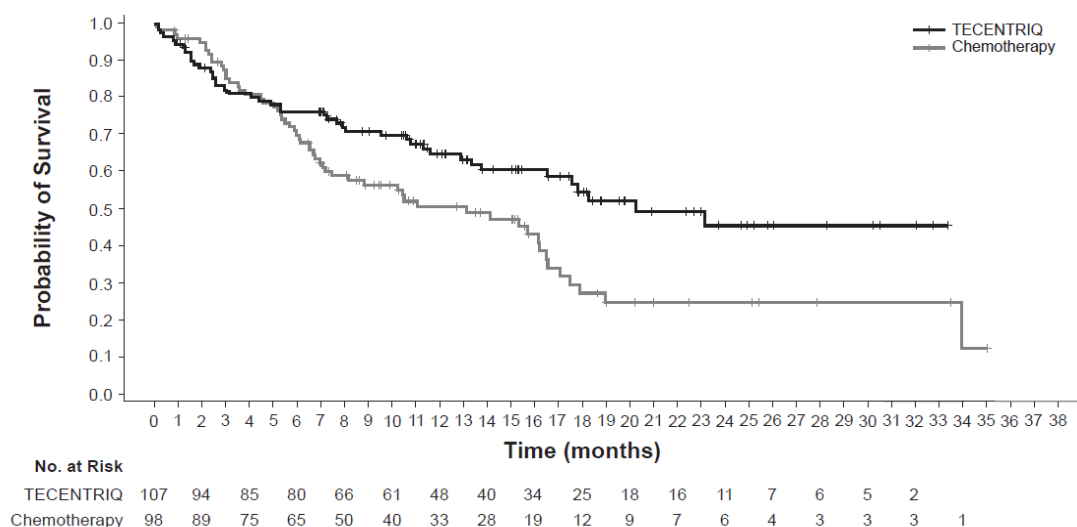
The trial demonstrated a statistically significant improvement in OS for patients with high PD-L1 expression (TC \geq 50% or IC \geq 10%) at the time of the OS interim analysis. There was no statistically significant difference in OS for the other two PD-L1 subgroups (TC \geq 5% or IC \geq 5%; and TC \geq 1% or IC \geq 1%) at the interim or final analyses. Efficacy results for patients with NSCLC with high PD-L1 expression are presented in Table 24 and Figure 1.

Table 26: Efficacy Results from IMpower110 in Patients with NSCLC with High PD-L1 Expression (TC ≥ 50% or IC ≥ 10%) and without EGFR or ALK Genomic Tumor Aberrations

	Arm A: TECENTRIQ N = 107	Arm B: Platinum-Based Chemotherapy N = 98
Overall Survival¹		
Deaths (%)	44 (41%)	57 (58%)
Median, months	20.2	13.1
(95% CI)	(16.5, NE)	(7.4, 16.5)
Hazard ratio ² (95% CI)	0.59 (0.40, 0.89)	
p-value ³	0.0106 ⁴	

¹Based on OS interim analysis. The median survival follow-up time in patients was 15.7 months.
²Stratified by sex and ECOG performance status
³Based on the stratified log-rank test compared to Arm A
⁴Compared to the allocated alpha of 0.0413 (two-sided) for this interim analysis.
CI=confidence interval; NE=not estimable

Figure 1: Kaplan-Meier Plot of Overall Survival in IMpower110 in Patients with NSCLC with High PD-L1 Expression (TC ≥ 50% or IC ≥ 10%) and Without EGFR or ALK Genomic Tumor Aberrations



Investigator-assessed PFS showed a HR of 0.63 (95% CI: 0.45, 0.88), with median PFS of 8.1 months (95% CI: 6.8, 11.0) in the TECENTRIQ arm and 5 months (95% CI: 4.2, 5.7) in the platinum-based chemotherapy arm. The investigator-assessed confirmed ORR was 38% (95% CI: 29%, 48%) in the TECENTRIQ arm and 29% (95% CI: 20%, 39%) in the platinum-based chemotherapy arm.

Metastatic Chemotherapy-Naive Non-Squamous NSCLC

IMpower150

The efficacy of TECENTRIQ with bevacizumab, paclitaxel, and carboplatin was evaluated in IMpower150 (NCT02366143), a multicenter, international, randomized (1:1:1), open-label trial in patients with metastatic non-squamous NSCLC. Patients with stage IV non-squamous NSCLC who had received no prior chemotherapy for metastatic disease but could have received prior EGFR or ALK kinase inhibitor if appropriate, regardless of PD-L1 or T-effector gene (tGE)

status and ECOG performance status 0 or 1 were eligible. The trial excluded patients with a history of autoimmune disease, administration of a live attenuated vaccine within 28 days prior to randomization, active or untreated CNS metastases, administration of systemic immunostimulatory agents within 4 weeks or systemic immunosuppressive medications within 2 weeks prior to randomization, or clear tumor infiltration into the thoracic great vessels or clear cavitation of pulmonary lesions as seen on imaging. Randomization was stratified by sex, presence of liver metastases, and PD-L1 expression status on tumor cells (TC) and tumor-infiltrating immune cells (IC) as follows: TC3 and any IC vs. TC0/1/2 and IC2/3 vs. TC0/1/2 and IC0/1. Patients were randomized to one of the following three treatment arms.

- Arm A: TECENTRIQ 1200 mg, paclitaxel 175 mg/m² or 200 mg/m² and carboplatin AUC 6 mg/mL/min on Day 1 of each 21-day cycle for a maximum of 4 or 6 cycles
- Arm B: TECENTRIQ 1200 mg, bevacizumab 15 mg/kg, paclitaxel 175 mg/m² or 200 mg/m², and carboplatin AUC 6 mg/mL/min on Day 1 of each 21-day cycle for a maximum of 4 or 6 cycles
- Arm C: bevacizumab 15 mg/kg, paclitaxel 175 mg/m² or 200 mg/m², and carboplatin AUC 6 mg/mL/min on Day 1 of each 21-day cycle for a maximum of 4 or 6 cycles

Patients who had not experienced disease progression following the completion or cessation of platinum-based chemotherapy, received:

- Arm A: TECENTRIQ 1200 mg intravenously on Day 1 of each 21-day cycle until disease progression or unacceptable toxicity
- Arm B: TECENTRIQ 1200 mg and bevacizumab 15 mg/kg intravenously on Day 1 of each 21-day cycle until disease progression or unacceptable toxicity
- Arm C: bevacizumab 15 mg/kg intravenously on Day 1 of each 21-day cycle until disease progression or unacceptable toxicity

Tumor assessments were conducted every 6 weeks for the first 48 weeks following Cycle 1, Day 1 and then every 9 weeks thereafter. Tumor specimens were evaluated prior to randomization for PD-L1 tumor expression using the VENTANA PD-L1 (SP142) assay at a central laboratory. Tumor tissue was collected at baseline for expression of tGE signature and evaluation was performed using a clinical trial assay in a central laboratory prior to the analysis of efficacy outcome measures.

Major efficacy outcome measures for comparison of Arms B and C were progression free survival (PFS) by RECIST v1.1 in the tGE-WT (patients with high expression of T-effector gene signature [tGE], excluding those with EGFR- and ALK-positive NSCLC [WT]) and in the ITT-WT subpopulations and overall survival (OS) in the ITT-WT subpopulation. Additional efficacy outcome measures for comparison of Arms B and C or Arms A and C were PFS and OS in the ITT population, OS in the tGE-WT subpopulation, and ORR/DoR in the tGE-WT and ITT-WT subpopulations.

A total of 1202 patients were enrolled across the three arms of whom 1045 were in the ITT-WT subpopulation and 447 were in the tGE-WT subpopulation. The demographic information is limited to the 800 patients enrolled in Arms B and C where efficacy has been demonstrated. The median age was 63 years (range: 31 to 90), and 60% of patients were male. The majority of patients were White (82%), 13% of patients were Asian, 10% were Hispanic, and 2% of patients were Black. Clinical sites in Asia (enrolling 13% of the study population) received paclitaxel at a dose of 175 mg/m² while the remaining 87% received paclitaxel at a dose of 200 mg/m². Approximately 14% of patients had liver metastases at baseline, and most patients were current or previous smokers (80%). Baseline ECOG performance status was 0 (43%) or 1 (57%). PD-L1 was TC3 and any IC in 12%, TC0/1/2 and IC2/3 in 13%, and TC0/1/2 and IC0/1 in 75%. The

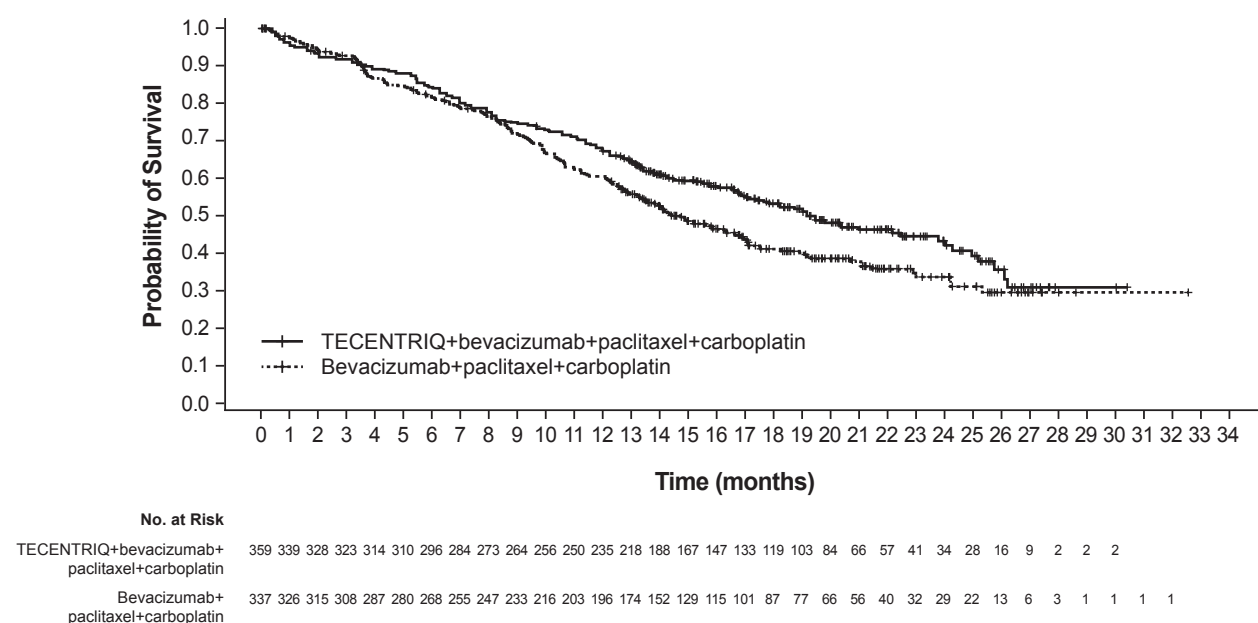
demographics for the 696 patients in the ITT-WT subpopulation were similar to the ITT population except for the absence of patients with EGFR- or ALK-positive NSCLC.

The trial demonstrated a statistically significant improvement in PFS between Arms B and C in both the tGE-WT and ITT-WT subpopulations, but did not demonstrate a significant difference for either subpopulation between Arms A and C based on the final PFS analyses. In the interim analysis of OS, a statistically significant improvement was observed for Arm B compared to Arm C, but not for Arm A compared to Arm C. Efficacy results for the ITT-WT subpopulation are presented in Table 25 and Figure 2.

Table 27: Efficacy Results in ITT-WT Population in IMpower150

	Arm C: Bevacizumab, Paclitaxel and Carboplatin N = 337	Arm B: TECENTRIQ with Bevacizumab, Paclitaxel, and Carboplatin N = 359	Arm A: TECENTRIQ with Paclitaxel, and Carboplatin N = 349
Overall Survival¹			
Deaths (%)	197 (59%)	179 (50%)	179 (51%)
Median, months	14.7	19.2	19.4
(95% CI)	(13.3, 16.9)	(17.0, 23.8)	(15.7, 21.3)
Hazard ratio ² (95% CI)	---	0.78 (0.64, 0.96)	0.84 (0.72, 1.08)
p-value ³	---	0.016 ⁴	0.204 ⁵
Progression-Free Survival⁶			
Number of events (%)	247 (73%)	247 (69%)	245 (70%)
Median, months	7.0	8.5	6.7
(95% CI)	(6.3, 7.9)	(7.3, 9.7)	(5.6, 6.9)
Hazard ratio ² (95% CI)	---	0.71 (0.59, 0.85)	0.94 (0.79, 1.13)
p-value ³	---	0.0002 ⁷	0.5219
Objective Response Rate⁶			
Number of responders (%)	142 (42%)	196 (55%)	150 (43%)
(95% CI)	(37, 48)	(49, 60)	(38, 48)
Complete Response	3 (1%)	14 (4%)	9 (3%)
Partial Response	139 (41%)	182 (51%)	141 (40%)
Duration of Response⁶	n = 142	n = 196	n = 150
Median, months	6.5	10.8	9.5
(95% CI)	(5.6, 7.6)	(8.4, 13.9)	(7.0, 13.0)
¹ Based on OS interim analysis . ² Stratified by sex, presence of liver metastases, and PD-L1 expression status on TC and IC ³ Based on the stratified log-rank test compared to Arm C ⁴ Compared to the allocated $\alpha=0.0174$ (two sided) for this interim analysis. ⁵ Compared to the allocated $\alpha=0.0128$ (two sided) for this interim analysis. ⁶ As determined by independent review facility (IRF) per RECIST v1.1 (Response Evaluation Criteria in Solid Tumors v1.1) ⁷ Compared to the allocated $\alpha=0.006$ (two sided) for the final PFS analysis. CI=confidence interval			

Figure 2: Kaplan-Meier Curves for Overall Survival in ITT-WT Population in IMpower150



Exploratory analyses showed that the subset of patients in the four drug regimen arm who were ADA positive by week 4 (30%) appeared to have similar efficacy (effect on overall survival) as compared to patients who tested negative for treatment-emergent ADA by week 4 (70%) [see *Adverse Reactions (6.2), Clinical Pharmacology (12.3)*]. In an exploratory analysis, propensity score matching was conducted to compare ADA positive patients in the TECENTRIQ, bevacizumab, paclitaxel, and carboplatin arm with a matched population in the bevacizumab, paclitaxel, and carboplatin arm. Similarly ADA negative patients in the TECENTRIQ, bevacizumab, paclitaxel, and carboplatin arm were compared with a matched population in the bevacizumab, paclitaxel, and carboplatin arm. Propensity score matching factors were: baseline sum of longest tumor size (BSLD), baseline ECOG, baseline albumin, baseline LDH, sex, tobacco history, metastatic site, TC level, and IC level. The hazard ratio comparing the ADA-positive subgroup with its matched control was 0.69 (95% CI: 0.44, 1.07). The hazard ratio comparing the ADA-negative subgroup with its matched control was 0.64 (95% CI: 0.46, 0.90).

IMpower130

The efficacy of TECENTRIQ with paclitaxel protein-bound and carboplatin was evaluated in IMpower130 (NCT02367781), a multicenter, randomized (2:1), open-label trial in patients with stage IV non-squamous NSCLC. Patients with Stage IV non-squamous NSCLC who had received no prior chemotherapy for metastatic disease, but could have received prior EGFR or ALK kinase inhibitor, if appropriate, were eligible. The trial excluded patients with history of autoimmune disease, administration of live attenuated vaccine within 28 days prior to randomization, administration of immunostimulatory agents within 4 weeks or systemic immunosuppressive medications within 2 weeks prior to randomization, and active or untreated CNS metastases. Randomization was stratified by sex, presence of liver metastases, and PD-L1 tumor expression according to the VENTANA PD-L1 (SP142) assay as follows: TC3 and any IC vs. TC0/1/2 and IC2/3 vs. TC0/1/2 and IC0/1. Patients were randomized to one of the following treatment regimens:

- TECENTRIQ 1200 mg on Day 1, paclitaxel protein-bound 100 mg/m² on Days 1, 8, and 15, and carboplatin AUC 6 mg/mL/min on Day 1 of each 21-day cycle for a maximum of 4 or 6

cycles followed by TECENTRIQ 1200 mg once every 3 weeks until disease progression or unacceptable toxicity, or

- Paclitaxel protein-bound 100 mg/m² on Days 1, 8 and 15 and carboplatin AUC 6 mg/mL/min on Day 1 of each 21-day cycle for a maximum of 4 or 6 cycles followed by best supportive care or pemetrexed.

Tumor assessments were conducted every 6 weeks for the first 48 weeks, then every 9 weeks thereafter. Major efficacy outcome measures were PFS by RECIST v1.1 and OS in the subpopulation of patients evaluated for and documented to have no EGFR or ALK genomic tumor aberrations (ITT-WT).

A total of 724 patients were enrolled; of these, 681 (94%) were in the ITT-WT population. The median age was 64 years (range: 18 to 86) and 59% were male. The majority of patients were white (90%), 2% of patients were Asian, 5% were Hispanic, and 4% were Black. Baseline ECOG performance status was 0 (41%) or 1 (58%). Most patients were current or previous smokers (90%). PD-L1 tumor expression was TC0/1/2 and IC0/1 in 73%; TC3 and any IC in 14%; and TC0/1/2 and IC2/3 in 13%.

Efficacy results for the ITT-WT population are presented in Table 26 and Figure 3.

Table 28: Efficacy Results from IMpower130

	TECENTRIQ with Paclitaxel Protein-Bound and Carboplatin	Paclitaxel Protein-Bound and Carboplatin
Overall Survival¹	n=453	n=228
Deaths (%)	228 (50%)	131 (57%)
Median, months	18.6	13.9
(95% CI)	(15.7, 21.1)	(12.0, 18.7)
Hazard ratio ² (95% CI)	0.80 (0.64, 0.99)	
p-value ³	0.0384 ⁴	
Progression-Free Survival⁶	n=453	n=228
Number of events (%)	330 (73%)	177 (78%)
Median, months	7.2	6.5
(95% CI)	(6.7, 8.3)	(5.6, 7.4)
Hazard ratio ² (95% CI)	0.75 (0.63, 0.91)	
p-value ³	0.0024 ⁵	
Overall Response Rate^{6,7}	n=453	n=228
Number of responders (%)	207 (46%)	74 (32%)
(95% CI)	(41, 50)	(26, 39)
Complete Response	22 (5%)	2 (1%)
Partial Response	185 (41%)	72 (32%)
Duration of Response^{6,7}	n=207	n=74
Median, months	10.8	7.8
(95% CI)	(9.0, 14.4)	(6.8, 10.9)
¹ Based on OS interim analysis		
² Stratified by sex and PD-L1 tumor expression on tumor cells (TC) and tumor infiltrating cells (IC)		
³ Based on the stratified log-rank test		
⁴ Compared to the allocated $\alpha=0.0428$ (two sided) for this interim analysis		

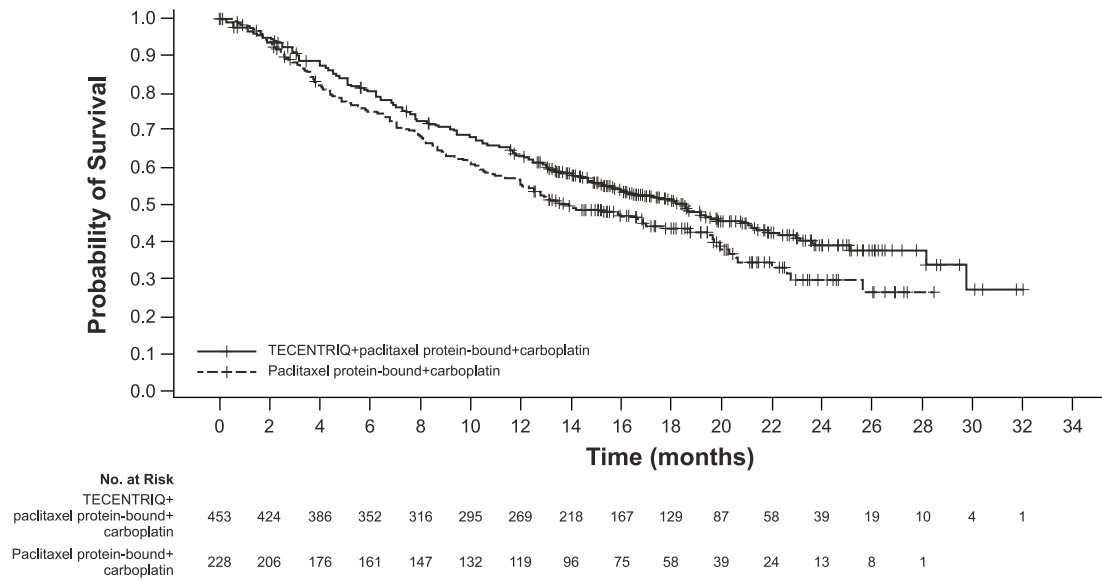
⁵Compared to the allocated $\alpha=0.006$ (two sided) for the final PFS analysis

⁶As determined by independent review facility (IRF) per RECIST v1.1 (Response Evaluation Criteria in Solid Tumors v1.1)

⁷Confirmed response

CI=confidence interval

Figure 3: Kaplan-Meier Curves for Overall Survival in IMpower130



Previously Treated Metastatic NSCLC

The efficacy of TECENTRIQ was evaluated in a multicenter, international, randomized (1:1), open-label study (OAK; NCT02008227) conducted in patients with locally advanced or metastatic NSCLC whose disease progressed during or following a platinum-containing regimen. Patients with a history of autoimmune disease, symptomatic or corticosteroid-dependent brain metastases, or requiring systemic immunosuppression within 2 weeks prior to enrollment were ineligible. Randomization was stratified by PD-L1 expression tumor-infiltrating immune cells (IC), the number of prior chemotherapy regimens (1 vs. 2), and histology (squamous vs. non-squamous).

Patients were randomized to receive TECENTRIQ 1200 mg intravenously every 3 weeks until unacceptable toxicity, radiographic progression, or clinical progression or docetaxel 75 mg/m² intravenously every 3 weeks until unacceptable toxicity or disease progression. Tumor assessments were conducted every 6 weeks for the first 36 weeks and every 9 weeks thereafter. Major efficacy outcome measure was overall survival (OS) in the first 850 randomized patients and OS in the subgroup of patients with PD-L1-expressing tumors (defined as $\geq 1\%$ PD-L1 expression on tumor cells [TC] or immune cells [IC]). Additional efficacy outcome measures were OS in all randomized patients (n = 1225), OS in subgroups based on PD-L1 expression, overall response rate (ORR), and progression free survival as assessed by the investigator per RECIST v.1.1.

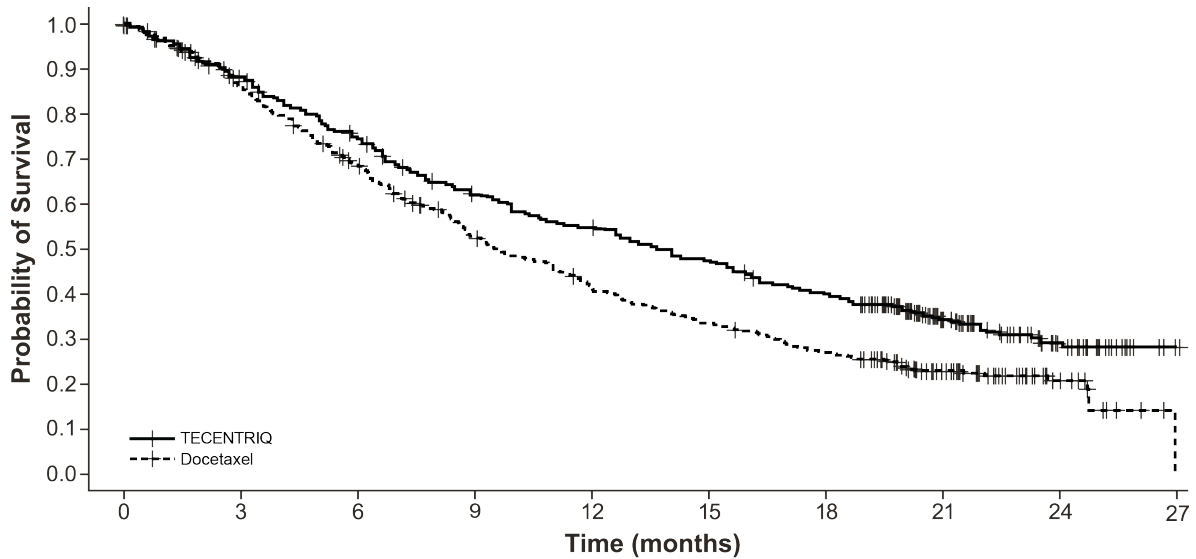
Among the first 850 randomized patients, the median age was 64 years (33 to 85 years) and 47% were ≥ 65 years old; 61% were male; 70% were White and 21% were Asian; 15% were current smokers and 67% were former smokers; and 37% had baseline ECOG PS of 0 and 63% had a baseline ECOG PS of 1. Nearly all (94%) had metastatic disease, 74% had non-squamous histology, 75% had received only one prior platinum-based chemotherapy regimen, and 55% of patients had PD-L1-expressing tumors.

Efficacy results are presented in Table 27 and Figure 4.

Table 29: Efficacy Results in OAK

	TECENTRIQ	Docetaxel
Overall Survival in first 850 patients		
Number of patients	N=425	N=425
Deaths (%)	271 (64%)	298 (70%)
Median, months	13.8	9.6
(95% CI)	(11.8, 15.7)	(8.6, 11.2)
Hazard ratio ¹ (95% CI)	0.74 (0.63, 0.87)	
p-value ²	0.0004 ³	
Progression-Free Survival		
Number of Patients	N=425	N=425
Events (%)	380 (89%)	375 (88%)
Progression (%)	332 (78%)	290 (68%)
Deaths (%)	48 (11%)	85 (20%)
Median, months	2.8	4.0
(95% CI)	(2.6, 3.0)	(3.3, 4.2)
Hazard ratio ¹ (95% CI)	0.95 (0.82, 1.10)	
Overall Response Rate ⁴		
Number of Patients	N=425	N=425
ORR, n (%)	58 (14%)	57 (13%)
(95% CI)	(11%, 17%)	(10%, 17%)
Complete Response	6 (1%)	1 (0.2%)
Partial Response	52 (12%)	56 (13%)
Duration of Response³		
	N=58	N=57
Median, months	16.3	6.2
(95% CI)	(10.0, NE)	(4.9, 7.6)
Overall Survival in all 1225 patients		
Number of patients	N=613	N=612
Deaths (%)	384 (63%)	409 (67%)
Median, months	13.3	9.8
(95% CI)	(11.3, 14.9)	(8.9, 11.3)
Hazard ratio ¹ (95% CI)	0.79 (0.69, 0.91)	
p-value ²	0.0013 ⁵	
¹ Stratified by PD-L1 expression in tumor infiltrating immune cells, the number of prior chemotherapy regimens, and histology ² Based on the stratified log-rank test ³ Compared to the pre-specified allocated α of 0.03 for this analysis ⁴ Per RECIST v1.1 (Response Evaluation Criteria in Solid Tumors v1.1) ⁵ Compared to the allocated α of 0.0177 for this interim analysis based on 86% information using O'Brien-Fleming boundary CI=confidence interval; NE=not estimable		

Figure 4: Kaplan-Meier Curves of Overall Survival in the First 850 Patients Randomized in OAK



No. Patients at Risk	0	3	6	9	12	15	18	21	24	27																		
TECENTRIQ	425	407	382	363	342	326	305	279	260	248	234	223	218	205	198	188	175	163	157	141	116	74	54	41	28	15	4	1
Docetaxel	425	390	365	336	311	286	263	236	219	195	179	168	151	140	132	123	116	104	98	90	70	51	37	28	16	6	3	

Tumor specimens were evaluated prospectively using the VENTANA PD-L1 (SP142) Assay at a central laboratory and the results were used to define the PD-L1 expression subgroups for pre-specified analyses. Of the 850 patients, 16% were classified as having high PD-L1 expression, defined as having PD-L1 expression on $\geq 50\%$ of TC or $\geq 10\%$ of IC. In an exploratory efficacy subgroup analysis of OS based on PD-L1 expression, the hazard ratio was 0.41 (95% CI: 0.27, 0.64) in the high PD-L1 expression subgroup and 0.82 (95% CI: 0.68, 0.98) in patients who did not have high PD-L1 expression.

Exploratory analyses showed that the subset of patients who were ADA positive by week 4 (21%) appeared to have less efficacy (effect on overall survival) as compared to patients who tested negative for treatment-emergent ADA by week 4 (79%) [see *Adverse Reactions (6.2)*, *Clinical Pharmacology (12.3)*]. ADA positive patients by week 4 appeared to have similar OS compared to docetaxel-treated patients. In an exploratory analysis, propensity score matching was conducted to compare ADA positive patients in the atezolizumab arm with a matched population in the docetaxel arm and ADA negative patients in the atezolizumab arm with a matched population in the docetaxel arm. Propensity score matching factors were: baseline sum of longest tumor size (BSLD), baseline ECOG, histology (squamous vs. non-squamous), baseline albumin, baseline LDH, gender, tobacco history, metastases status (advanced or local), metastatic site, TC level, and IC level. The hazard ratio comparing the ADA positive subgroup with its matched control was 0.89 (95% CI: 0.61, 1.3). The hazard ratio comparing the ADA negative subgroup with its matched control was 0.68 (95% CI: 0.55, 0.83).

14.3 Locally Advanced or Metastatic Triple-Negative Breast Cancer

The efficacy of TECENTRIQ in combination with paclitaxel protein-bound was investigated in IMpassion130 (NCT02425891), a multicenter, international, double-blinded, placebo-controlled, randomized (1:1) trial that included 902 unresectable locally advanced or metastatic triple-negative breast cancer patients that had not received prior chemotherapy for metastatic disease. The trial excluded patients with a history of autoimmune disease, administration of a live attenuated vaccine within 4 weeks prior to randomization, administration of systemic immunostimulatory agents within 4 weeks or systemic immunosuppressive medications within 2 weeks prior to randomization; or untreated or corticosteroid-dependent brain metastases.

Randomization was stratified by presence of liver metastases, prior taxane treatment, and by PD-L1 expression status in tumor infiltrating immune cells (IC) (PD-L1 stained tumor-infiltrating immune cells [IC] <1% of tumor area vs. \geq 1% of the tumor area) by the VENTANA PD-L1 (SP142) Assay. Of the 902 patients in the intent to treat population (ITT), 41% (369 patients) were classified as PD-L1 expression \geq 1%. Patients were randomized to receive TECENTRIQ 840 mg or placebo intravenously on Days 1 and 15 of every 28-day cycle with paclitaxel protein-bound 100 mg/m² intravenously on Days 1, 8 and 15 of every 28-day cycle. Patients received treatment until radiographic disease progression per RECIST v1.1, or unacceptable toxicity. Tumor assessments were performed every 8 weeks (\pm 1 week) for the first 12 months after Cycle 1, day 1 and every 12 weeks (\pm 1 week) thereafter. Major efficacy outcomes were investigator-assessed progression free survival (PFS) (per RECIST v1.1) and overall survival (OS) in the ITT population and PD-L1 expressing patient population.

In IMpassion130, the median age was 55 years (range: 20-86). Overall, most patients were women (99.6%) and the majority of patients were white (68%), Asian (18%), Black or African American (7%), and American Indian or Alaskan Native (4.4%). The demographic and baseline disease characteristics of the study population were well balanced between the treatment arms. Baseline ECOG performance status was 0 (58%) or 1 (41%). Overall, 41% of enrolled patients had PD-L1 expression \geq 1%, 27% had liver metastases and 7% brain metastases at baseline. Approximately half the patients had received a taxane (51%) or anthracycline (54%) in the (neo)adjuvant setting. Patient demographics and baseline tumor disease in the PD-L1 expressing population were generally representative of the broader study population.

Tumor specimens (archival or fresh) were evaluated prospectively using the VENTANA PD-L1 (SP142) Assay at a central laboratory and the results were used as a stratification factor for randomization and to define the PD-L1 expression subgroups for pre-specified analyses. .

The efficacy results of IMpassion130 for the patient population with PD-L1 expression \geq 1% are presented in Table 28 and Figure 5.

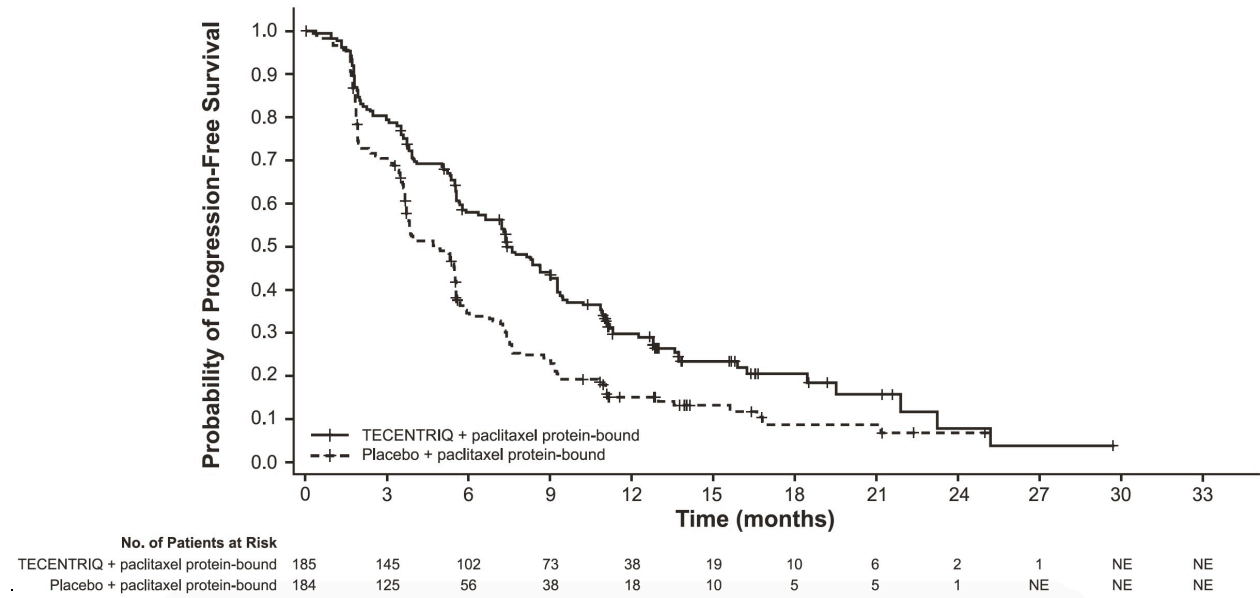
Table 30: Efficacy Results from IMpassion130 in Patients with PD-L1 Expression \geq 1%

	PD-L1 Expression \geq 1% ¹	
	TECENTRIQ in combination with paclitaxel protein-bound	Placebo in combination with paclitaxel protein-bound
Overall Survival ²	n=185	n=184
Deaths (%)	120 (65%)	139 (76%)
Median, months (95% CI)	25.4 (19.6, 30.7)	17.9 (13.6, 20.3)
Hazard ratio (95% CI)	0.67 (0.53, 0.86)	
Progression-Free Survival ^{3,4}	(n=185)	(n=184)
Events (%)	136 (74)	151 (82)
Median, months (95% CI)	7.4 (6.6, 9.2)	4.8 (3.8, 5.5)
Stratified Hazard ratio (95% CI) ⁵	0.60 (0.48, 0.77)	
p-value	<0.0001	
Objective Response Rate ^{3,4,6,7}	n=185	n=183
Number of responders (%)	98 (53)	60 (33)
(95% CI)	(45.5, 60.3)	(26.0, 40.1)
Complete Response (%)	17 (9)	1 (<1)
Partial Response (%)	81 (44)	59 (32)
Duration of Response ^{3,4,7}	n=98	n=60

Median, months (95% CI)	9.2 (7.5, 11.9)	6.2 (5.5, 8.8)
----------------------------	--------------------	-------------------

¹ PD-L1 expression in tumor-infiltrating immune cells (IC)
² OS in the PD-L1 expression $\geq 1\%$ population was a major efficacy endpoint, but there remained no alpha to evaluate this endpoint. These results should be considered not statistically significant.
³ As determined by investigator assessment
⁴ per RECIST v1.1 (Response Evaluation Criteria in Solid Tumors v1.1)
⁵ Stratified by presence of liver metastases, and by prior taxane treatment
⁶ Patients with measurable disease at baseline
⁷ Confirmed responses
PFS=Progression-Free Survival; CI=Confidence Interval; ORR=Objective Response Rate; DOR=Duration of Response; NE=Not Estimable

Figure 5: Kaplan-Meier Plot of Progression-Free-Survival in IMpassion130 in Patients with PD-L1 Expression $\geq 1\%$



14.4 Lack of Efficacy in Combination with Paclitaxel in Locally Advanced or Metastatic Triple-Negative Breast Cancer

The efficacy of TECENTRIQ in combination with paclitaxel in patients with unresectable locally advanced or metastatic triple-negative breast cancer has not been demonstrated. IMpassion131 (NCT03125902) was a multicenter, international, double-blinded, placebo-controlled, randomized (2:1) trial that included 651 patients with unresectable locally advanced or metastatic triple-negative breast cancer that had not received prior chemotherapy for metastatic disease. Of these, 45% (292) were classified as PD-L1 expression $\geq 1\%$.

Patients were randomized to receive TECENTRIQ 840 mg or placebo intravenously on Days 1 and 15 of every 28-day cycle with paclitaxel 90 mg/m² intravenously on Days 1, 8 and 15 of every 28-day cycle. Patients received treatment until radiographic disease progression or unacceptable toxicity. Randomization was stratified by presence of liver metastases, prior taxane treatment, and by PD-L1 expression status in tumor infiltrating immune cells (IC) (PD-L1 stained tumor-infiltrating immune cells [IC] $<1\%$ of tumor area vs. $\geq 1\%$ of the tumor area) determined by the VENTANA PD-L1 (SP142) Assay.

The major efficacy endpoint of investigator assessed progression free survival (via RECIST v1.1) in the PD-L1 expressing population after 61% of patients experienced a PFS event showed a non-statistically significant HR of 0.82 (95% CI: 0.60, 1.12). The median PFS in the

TECENTRIQ with paclitaxel arm was 6.0 months (95% CI: 5.6, 7.4), and the median PFS in the placebo with paclitaxel arm was 5.7 months (95% CI: 5.4, 7.2).

Overall survival in the PD-L1 expressing population with 42% deaths in the same population showed a HR of 1.11 (95% CI: 0.76, 1.64). The median survival for TECENTRIQ in combination with paclitaxel was 22.1 months (95% CI: 19.2, 30.5) and the median survival for placebo with paclitaxel was 28.3 months (95% CI: 19.1, NR).

14.5 Small Cell Lung Cancer

The efficacy of TECENTRIQ with carboplatin and etoposide was investigated in IMpower133 (NCT02763579), a randomized (1:1), multicenter, double-blind, placebo-controlled trial in 403 patients with ES-SCLC. IMpower133 enrolled patients with ES-SCLC who had received no prior chemotherapy for extensive stage disease and ECOG performance status 0 or 1. The trial excluded patients with active or untreated CNS metastases, history of autoimmune disease, administration of a live, attenuated vaccine within 4 weeks prior to randomization, or administration of systemic immunosuppressive medications within 1 week prior to randomization. Randomization was stratified by sex, ECOG performance status, and presence of brain metastases. Patients were randomized to receive one of the following two treatment arms:

- TECENTRIQ 1200 mg and carboplatin AUC 5 mg/mL/min on Day 1 and etoposide 100 mg/m² intravenously on Days 1, 2 and 3 of each 21-day cycle for a maximum of 4 cycles followed by TECENTRIQ 1200 mg once every 3 weeks until disease progression or unacceptable toxicity, or
- placebo and carboplatin AUC 5 mg/mL/min on Day 1 and etoposide 100 mg/m² intravenously on Days 1, 2, and 3 of each 21-day cycle for a maximum of 4 cycles followed by placebo once every 3 weeks until disease progression or unacceptable toxicity.

Administration of TECENTRIQ was permitted beyond RECIST-defined disease progression. Tumor assessments were conducted every 6 weeks for the first 48 weeks following Cycle 1, Day 1 and then every 9 weeks thereafter. Patients treated beyond disease progression had tumor assessment conducted every 6 weeks until treatment discontinuation.

Major efficacy outcome measures were OS and PFS as assessed by investigator per RECIST v1.1 in the intent-to-treat population. Additional efficacy outcome measures included ORR and DoR as assessed by investigator per RECIST v1.1.

A total of 403 patients were randomized, including 201 to the TECENTRIQ arm and 202 to the chemotherapy alone arm. The median age was 64 years (range 26 to 90) and 65% were male. The majority of patients were White (80%); 17% were Asian, 4% were Hispanic and 1% were Black. Baseline ECOG performance status was 0 (35%) or 1 (65%); 9% of patients had a history of brain metastases, and 97% were current or previous smokers.

Efficacy results are presented in Table 29 and Figure 6.

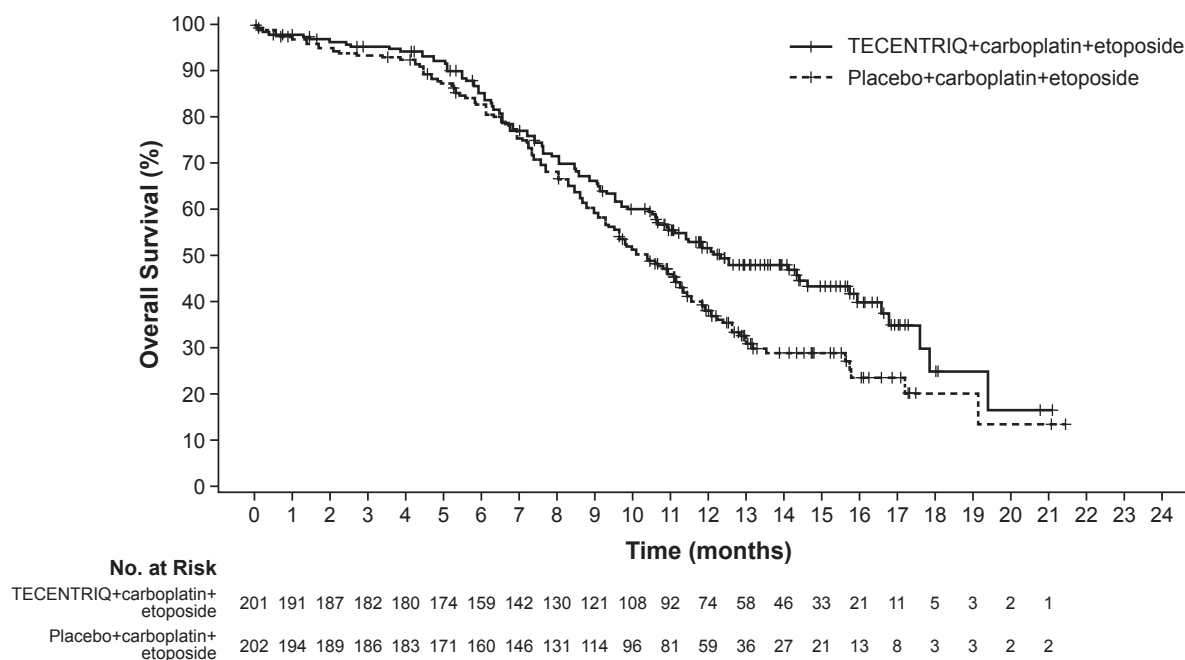
Table 31: Efficacy Results from IMpower133

	TECENTRIQ with Carboplatin and Etoposide	Placebo with Carboplatin and Etoposide
Overall Survival	N=201	N=202
Deaths (%)	104 (52%)	134 (66%)
Median, months (95% CI)	12.3 (10.8, 15.9)	10.3 (9.3, 11.3)
Hazard ratio ³ (95% CI)	0.70 (0.54, 0.91)	
p-value ^{4,5}	0.0069	
Progression-Free Survival^{1,2}	N=201	N=202
Number of events (%)	171 (85%)	189 (94%)

Median, months (95% CI)	5.2 (4.4, 5.6)	4.3 (4.2, 4.5)
Hazard ratio ³ (95% CI)	0.77 (0.62, 0.96)	
p-value ^{4,6}	0.0170	
Objective Response Rate ^{1,2,7}	N=201	N=202
Number of responders (%) (95% CI)	121 (60%) (53, 67)	130 (64%) (57, 71)
Complete Response (%)	5 (2%)	2 (1%)
Partial Response (%)	116 (58%)	128 (63%)
Duration of Response ^{1,2,7}	N=121	N=130
Median, months (95% CI)	4.2 (4.1, 4.5)	3.9 (3.1, 4.2)

¹As determined by investigator assessment
²per RECIST v1.1 (Response Evaluation Criteria in Solid Tumors v1.1)
³Stratified by sex and ECOG performance status
⁴Based on the stratified log-rank test
⁵Compared to the allocated α of 0.0193 for this interim analysis based on 78% information using O'Brien-Fleming boundary
⁶Compared to the allocated α of 0.05 for this analysis.
⁷Confirmed response
CI=confidence interval

Figure 6: Kaplan-Meier Plot of Overall Survival in IMpower133



14.6 Hepatocellular Carcinoma

The efficacy of TECENTRIQ in combination with bevacizumab was investigated in IMbrave150 (NCT03434379), a multicenter, international, open-label, randomized trial in patients with locally advanced unresectable and/or metastatic hepatocellular carcinoma who have not received prior systemic therapy. Randomization was stratified by geographic region (Asia excluding Japan vs. rest of world), macrovascular invasion and/or extrahepatic spread (presence vs. absence), baseline AFP (<400 vs. \geq 400 ng/mL), and by ECOG performance status (0 vs. 1).

A total of 501 patients were randomized (2:1) to receive either TECENTRIQ as an intravenous infusion of 1200 mg, followed by 15 mg/kg bevacizumab, on the same day every 3 weeks or sorafenib 400 mg given orally twice daily, until disease progression or unacceptable toxicity. Patients could discontinue either TECENTRIQ or bevacizumab (e.g., due to adverse events) and continue on single-agent therapy until disease progression or unacceptable toxicity associated with the single-agent.

The study enrolled patients who were ECOG performance score 0 or 1 and who had not received prior systemic treatment. Patients were required to be evaluated for the presence of varices within 6 months prior to treatment, and were excluded if they had variceal bleeding within 6 months prior to treatment, untreated or incompletely treated varices with bleeding, or high risk of bleeding. Patients with Child-Pugh B or C cirrhosis, moderate or severe ascites; history of hepatic encephalopathy; a history of autoimmune disease; administration of a live, attenuated vaccine within 4 weeks prior to randomization; administration of systemic immunostimulatory agents within 4 weeks or systemic immunosuppressive medications within 2 weeks prior to randomization; or untreated or corticosteroid-dependent brain metastases were excluded. Tumor assessments were performed every 6 weeks for the first 54 weeks and every 9 weeks thereafter.

The demographics and baseline disease characteristics of the study population were balanced between the treatment arms. The median age was 65 years (range: 26 to 88) and 83% of patients were male. The majority of patients were Asian (57%) or White (35%); 40% were from Asia (excluding Japan). Approximately 75% of patients presented with macrovascular invasion and/or extrahepatic spread and 37% had a baseline AFP \geq 400 ng/mL. Baseline ECOG performance status was 0 (62%) or 1 (38%). HCC risk factors were Hepatitis B in 48% of patients, Hepatitis C in 22%, and 31% of patients had non-viral liver disease. The majority of patients had BCLC stage C (82%) disease at baseline, while 16% had stage B, and 3% had stage A.

The major efficacy outcome measures were overall survival (OS) and independent review facility (IRF)-assessed progression free survival (PFS) per RECIST v1.1. Additional efficacy outcome measures were IRF-assessed overall response rate (ORR) per RECIST and mRECIST.

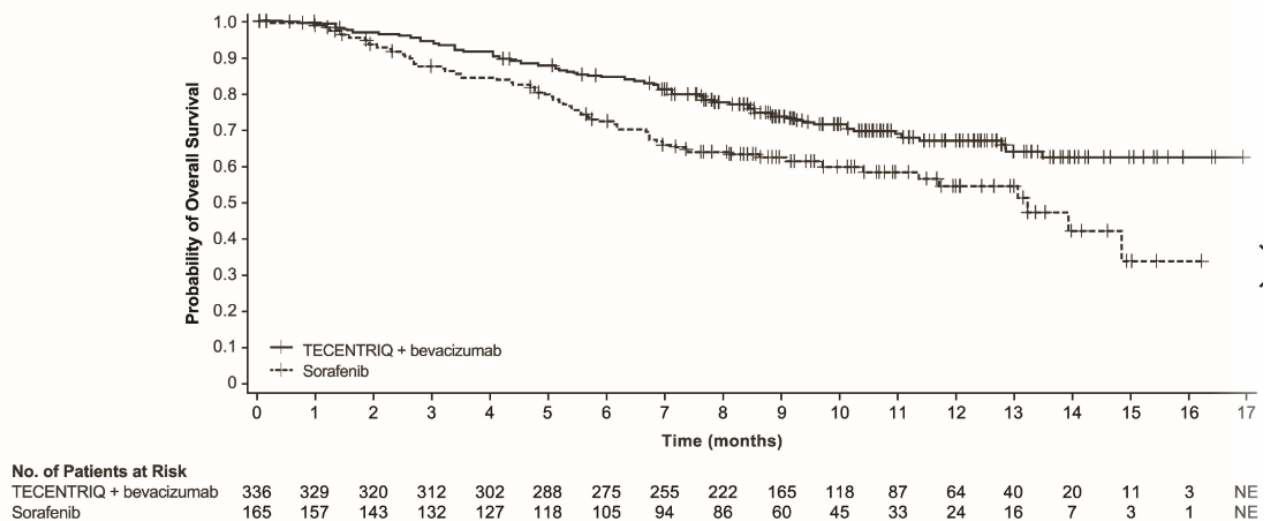
Efficacy results are presented in Table 30 and Figure 7.

Table 32: Efficacy Results from IMbrave150

	TECENTRIQ in combination with Bevacizumab (N= 336)	Sorafenib (N=165)
Overall Survival		
Number of deaths (%)	96 (29)	65 (39)
Median OS in months (95% CI)	NE (NE, NE)	13.2 (10.4, NE)
Hazard ratio ¹ (95% CI)	0.58 (0.42, 0.79)	
p-value ²	0.0006 ²	
Progression-Free Survival³		
Number of events(%)	197 (59)	109 (66)
Median PFS in months (95% CI)	6.8 (5.8, 8.3)	4.3 (4.0, 5.6)
Hazard ratio ¹ (95% CI)	0.59 (0.47, 0.76)	
p-value	<0.0001	
Overall Response Rate^{3,5}(ORR), RECIST 1.1		
Number of responders (%)	93 (28)	19 (12)
(95% CI)	(23, 33)	(7,17)
p-value ⁴	<0.0001	
Complete responses, n (%)	22 (7)	0
Partial responses, n (%)	71 (21)	19 (12)
Duration of Response^{3,5} (DOR) RECIST 1.1		

	(n=93)	(n=19)
Median DOR in months (95% CI)	NE (NE, NE)	6.3 (4.7, NE)
Range (months)	(1.3+, 13.4+)	(1.4+, 9.1+)
Overall Response Rate^{3,5} (ORR), HCC mRECIST		
Number of responders (%) (95% CI)	112 (33) (28, 39)	21 (13) (8, 19)
p-value ⁴	<0.0001	
Complete responses, n (%)	37 (11)	3 (1.8)
Partial responses, n (%)	75 (22)	18 (11)
Duration of Response^{3,5} (DOR) HCC mRECIST		
	(n=112)	(n=21)
Median DOR in months (95% CI)	NE (NE, NE)	6.3 (4.9, NE)
Range (months)	(1.3+, 13.4+)	(1.4+, 9.1+)
¹ Stratified by geographic region (Asia excluding Japan vs. rest of world), macrovascular invasion and/or extrahepatic spread (presence vs. absence), and baseline AFP (<400 vs. ≥400 ng/mL) ² Based on two-sided stratified log-rank test; as compared to significance level 0.004 (2-sided) based on 161/312=52% information using the OBF method ³ Per independent radiology review ⁴ Based on two-sided Cochran-Mantel-Haenszel test ⁵ Confirmed responses + Denotes a censored value CI=confidence interval; HCC mRECIST= Modified RECIST Assessment for Hepatocellular Carcinoma; NE=not estimable; N/A=not applicable; RECIST 1.1= Response Evaluation Criteria in Solid Tumors v1.1		

Figure 7: Kaplan-Meier Plot of Overall Survival in IMbrave150



Exploratory analyses showed that the subset of patients (20%) who were ADA-positive by week 6 appeared to have reduced efficacy (effect on OS) as compared to patients (80%) who tested negative for treatment-emergent ADA by week 6 [see *Adverse Reactions (6.2)*, *Clinical Pharmacology (12.3)*]. ADA-positive patients by week 6 appeared to have similar overall survival compared to sorafenib-treated patients. In an exploratory analysis, inverse probability weighting was conducted to compare ADA-positive patients and ADA-negative patients in the TECENTRIQ and bevacizumab arm to the sorafenib arm. Inverse probability weighting factors were: baseline sum of longest tumor size (BSLD), baseline ECOG, baseline albumin, baseline LDH, sex, age, race, geographic region, weight, neutrophil-to-lymphocyte ratio, AFP (<400 ng/mL vs ≥400 ng/mL), number of metastatic sites, MVI and/or EHS present at study entry, etiology (HBV vs. HCV vs. non-viral) and Child-Pugh Score (A5 VS. A6). The OS hazard ratio

comparing the ADA-positive subgroup of the TECENTRIQ and bevacizumab arm to sorafenib was 0.93 (95% CI: 0.57, 1.53). The OS hazard ratio comparing the ADA-negative subgroup to sorafenib was 0.39 (95% CI: 0.26, 0.60).

14.7 Melanoma

The efficacy of TECENTRIQ in combination with cobimetinib and vemurafenib was evaluated in a double-blind, randomized (1:1), placebo-controlled, multicenter trial (IMspire150; NCT02908672) conducted in 514 patients. Randomization was stratified by geographic location (North America vs. Europe vs. Australia, New Zealand, and others) and baseline lactate dehydrogenase (LDH) [less than or equal to upper limit of normal (ULN) vs. greater than ULN]. Eligible patients were required to have previously untreated unresectable or metastatic BRAF V600 mutation-positive melanoma as detected by a locally available test and centrally confirmed with the FoundationOne™ assay. Patients were excluded if they had history of autoimmune disease; administration of a live, attenuated vaccine within 28 days prior to randomization; administration of systemic immunostimulatory agents within 4 weeks or systemic immunosuppressive medications within 2 weeks prior to randomization; and active or untreated CNS metastases.

TECENTRIQ was initiated after patients received a 28-day treatment cycle of cobimetinib 60 mg orally once daily (21 days on / 7 days off) and vemurafenib 960 mg orally twice daily Days 1-21 and 720 mg orally twice daily Days 22-28. Patients received TECENTRIQ 840 mg intravenous infusion over 60 minutes every 2 weeks in combination with cobimetinib 60 mg orally once daily and vemurafenib 720 mg orally twice daily, or placebo in combination with cobimetinib 60 mg orally once daily and vemurafenib 960 mg orally twice daily. Treatment continued until disease progression or unacceptable toxicity. There was no crossover at the time of disease progression. Tumor assessments were performed every 8 weeks (\pm 1 week) for the first 24 months and every 12 weeks (\pm 1 week) thereafter.

The major efficacy outcome measure was investigator-assessed progression-free survival (PFS) per RECIST v1.1. Additional efficacy outcomes included PFS assessed by an independent central review, investigator-assessed ORR, OS, and DOR.

The median age of the study population was 54 years (range: 22-88), 58% of patients were male, 95% were White, a baseline ECOG performance status of 0 (77%) or 1 (23%), 33% had elevated LDH, 94% had metastatic disease, 60% were Stage IV (M1C), 56% had less than three metastatic sites at baseline, 3% had prior treatment for brain metastases, 30% had liver metastases at baseline, and 14% had received prior adjuvant systemic therapy. Based on central testing, 74% were identified as having a V600E mutation, 11% as having V600K mutation, and 1% as having V600D or V600R mutations.

Efficacy results are summarized in Table 31 and Figure 8. Patients had a median survival follow up time of 18.9 months.

Table 33 Efficacy Results from IMspire150

	Tecentriq + Cobimetinib + Vemurafenib N=256	Placebo + Cobimetinib + Vemurafenib N=258
Progression-Free Survival¹		
Number of events (%)	148 (58)	179 (69)
Median, months	15.1	10.6
(95% CI)	(11.4, 18.4)	(9.3, 12.7)
Hazard ratio ² (95% CI)	0.78 (0.63, 0.97)	

	Tecentriq + Cobimetinib + Vemurafenib N=256	Placebo + Cobimetinib + Vemurafenib N=258
p-value ³		0.0249
Overall Response Rate^{1,4}		
Number of responders (%)	170 (66)	168 (65)
(95% CI)	(60, 72)	(59, 71)
Complete responses, n (%)	41 (16)	46 (18)
Partial response, n (%)	129 (50)	122 (47)
Duration of Response^{1,4}		
	n=170	n=168
Median, months	20.4	12.5
(95% CI)	(15.1, NE)	(10.7, 16.6)

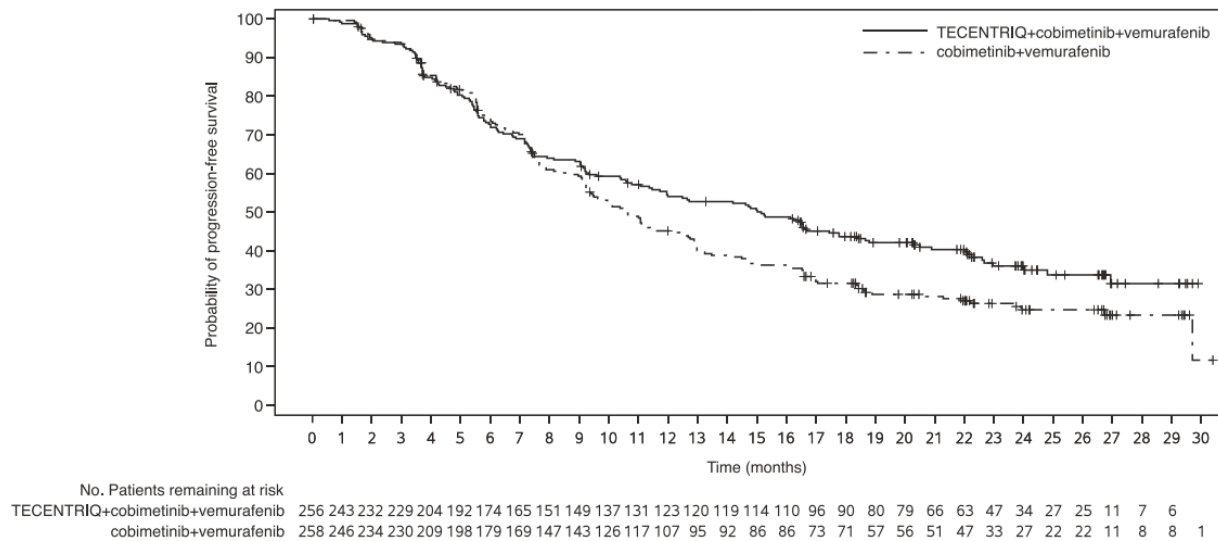
¹ As determined by investigator assessment with Response Evaluation Criteria in Solid Tumors v1.1.; CI=confidence interval;

² Stratified by baseline LDH

³Based on the stratified log-rank test

⁴Confirmed Responses

Figure 8: Kaplan-Meier Plot for Progression-Free Survival in IMspire150



At a pre-specified analysis at the time of the primary analysis of PFS, the OS data were not mature. The median OS was 28.8 months with 93 (36%) deaths in the TECENTRIQ plus cobimetinib and vemurafenib arm, and 25.1 months with 112 (43%) deaths in the placebo plus cobimetinib and vemurafenib arm. The hazard ratio for OS was 0.85 (95% CI: 0.64, 1.11) and the p-value was 0.2310.

16 HOW SUPPLIED/STORAGE AND HANDLING

TECENTRIQ injection is a sterile, preservative-free, and colorless to slightly yellow solution for intravenous infusion supplied as a carton containing one 840 mg/14 mL single-dose vial (NDC 50242-918-01) or 1,200 mg/20 mL single-dose vial (NDC 50242-917-01).

Store vials under refrigeration at 2°C to 8°C (36°F to 46°F) in original carton to protect from light. Do not freeze. Do not shake.

17 PATIENT COUNSELING INFORMATION

Advise the patient to read the FDA-approved patient labeling (Medication Guide).

Immune-Mediated Adverse Reactions

Inform patients of the risk of immune-mediated adverse reactions that may require corticosteroid treatment and interruption or discontinuation of TECENTRIQ, including:

- Pneumonitis: Advise patients to contact their healthcare provider immediately for any new or worsening cough, chest pain, or shortness of breath [see *Warnings and Precautions (5.1)*].
- Colitis: Advise patients to contact their healthcare provider immediately for diarrhea, blood or mucus in stools, or severe abdominal pain [see *Warnings and Precautions (5.1)*].
- Hepatitis: Advise patients to contact their healthcare provider immediately for jaundice, severe nausea or vomiting, pain on the right side of abdomen, lethargy, or easy bruising or bleeding [see *Warnings and Precautions (5.1)*].
- Endocrinopathies: Advise patients to contact their healthcare provider immediately for signs or symptoms of hypophysitis, hyperthyroidism, hypothyroidism, adrenal insufficiency, or type 1 diabetes mellitus, including diabetic ketoacidosis [see *Warnings and Precautions (5.1)*].
- Nephritis: Advise patients to contact their healthcare provider immediately for pelvic pain, frequent urination, or unusual swelling. [see *Warnings and Precautions (5.1)*].
- Dermatologic Adverse Reactions: Advise patients to contact their healthcare provider immediately for generalized rash, skin eruption, or painful skin and mucous membrane lesions [see *Warnings and Precautions (5.1)*].
- Other Immune-Mediated Adverse Reactions: Advise patients to contact their healthcare provider immediately for signs or symptoms of other potential immune-mediated adverse reactions [see *Warnings and Precautions (5.1)*].

Infusion-Related Reactions

Advise patients to contact their healthcare provider immediately for signs or symptoms of infusion-related reactions [see *Warnings and Precautions (5.2)*].

Complications of Allogeneic HSCT after PD-1/PD-L1 inhibitors

Follow patients closely for evidence of transplant-related complications and intervene promptly. Consider the benefits versus risks of treatment with a PD-1/PD-L1 blocking antibody prior to or after an allogeneic HSCT [see *Warnings and Precautions (5.3)*].

Embryo-Fetal Toxicity

Advise females of reproductive potential that TECENTRIQ can cause harm to a fetus and to inform their healthcare provider of a known or suspected pregnancy [see *Warnings and Precautions (5.5)*, *Use in Specific Populations (8.1, 8.3)*].

Advise females of reproductive potential to use effective contraception during treatment and for at least 5 months after the last dose of TECENTRIQ [see *Use in Specific Populations (8.3)*].

Lactation

Advise female patients not to breastfeed while taking TECENTRIQ and for at least 5 months after the last dose [see *Use in Specific Populations (8.2)*].

Manufactured by:
Genentech, Inc.
A Member of the Roche Group
1 DNA Way
South San Francisco, CA 94080-4990

U.S. License No. 1048

TECENTRIQ is a registered trademark of Genentech, Inc.

©2021 Genentech, Inc.

MEDICATION GUIDE
TECENTRIQ® (te-SEN-trik)
(atezolizumab)
Injection

What is the most important information I should know about TECENTRIQ?

TECENTRIQ is a medicine that may treat certain cancers by working with your immune system. TECENTRIQ can cause your immune system to attack normal organs and tissues in any area of your body and can affect the way they work. These problems can sometimes become severe or life-threatening and can lead to death. You can have more than one of these problems at the same time. These problems may happen anytime during your treatment or even after your treatment has ended.

Call or see your healthcare provider right away if you develop any new or worse signs or symptoms, including:

Lung problems.

- cough
- shortness of breath
- chest pain

Intestinal problems.

- diarrhea (loose stools) or more frequent bowel movements than usual
- stools that are black, tarry, sticky, or have blood or mucus
- severe stomach-area (abdomen) pain or tenderness

Liver problems.

- yellowing of your skin or the whites of your eyes
- severe nausea or vomiting
- pain on the right side of your stomach area (abdomen)
- dark urine (tea colored)
- bleeding or bruising more easily than normal

Hormone gland problems.

- headaches that will not go away or unusual headaches
- eye sensitivity to light
- eye problems
- rapid heart beat
- increased sweating
- extreme tiredness
- weight gain or weight loss
- feeling more hungry or thirsty than usual
- urinating more often than usual
- hair loss
- feeling cold
- constipation
- your voice gets deeper
- dizziness or fainting
- changes in mood or behavior, such as decreased sex drive, irritability, or forgetfulness

Kidney problems.

- decrease in your amount of urine
- blood in your urine
- swelling of your ankles
- loss of appetite

Skin problems.

- rash
- itching
- skin blistering or peeling
- painful sores or ulcers in mouth or nose, throat, or genital area
- fever or flu-like symptoms
- swollen lymph nodes

Problems can also happen in other organs.

These are not all of the signs and symptoms of immune system problems that can happen with TECENTRIQ. Call or see your healthcare provider right away for any new or worse signs or symptoms, including:

- chest pain, irregular heartbeat, shortness of breath, or swelling of ankles
- confusion, sleepiness, memory problems, changes in mood or behavior, stiff neck, balance problems, tingling or numbness of the arms or legs
- double vision, blurry vision, sensitivity to light, eye pain, changes in eye sight
- persistent or severe muscle pain or weakness, muscle cramps
- low red blood cells, bruising

Infusion reactions that can sometimes be severe or life-threatening. Signs and symptoms of infusion reactions may include:

- chills or shaking
- itching or rash
- flushing
- shortness of breath or wheezing
- dizziness
- feeling like passing out
- fever
- back or neck pain

Complications, including graft-versus-host disease (GVHD), in people who have received a bone marrow (stem cell) transplant that uses donor stem cells (allogeneic). These complications can be serious and can lead to death.

These complications may happen if you underwent transplantation either before or after being treated with TECENTRIQ. Your healthcare provider will monitor you for these complications.

Getting medical treatment right away may help keep these problems from becoming more serious.

Your healthcare provider will check you for these problems during your treatment with TECENTRIQ. Your healthcare provider may treat you with corticosteroid or hormone replacement medicines. Your healthcare provider may also need to delay or completely stop treatment with TECENTRIQ if you have severe side effects.

What is TECENTRIQ?

TECENTRIQ is a prescription medicine used to treat adults with:

- **a type of bladder and urinary tract cancer called urothelial carcinoma.** TECENTRIQ may be used when your bladder cancer has spread or cannot be removed by surgery, **and if you have any one of the following conditions:**
 - you are not able to take chemotherapy that contains a medicine called cisplatin, and your cancer tests positive for “PD-L1”, **or**
 - you are not able to take chemotherapy that contains any platinum regardless of “PD-L1” status, **or**
 - you have tried chemotherapy that contains platinum, and it did not work or is no longer working.
- **a type of lung cancer called non-small cell lung cancer (NSCLC).**
 - **TECENTRIQ may be used alone as your first treatment when your lung cancer:**
 - has spread or grown, **and**
 - your cancer tests positive for “high PD-L1”, **and**
 - your tumor does not have an abnormal “EGFR” or “ALK” gene.
 - **TECENTRIQ may be used with the medicines bevacizumab, paclitaxel, and carboplatin as your first treatment when your lung cancer:**
 - has spread or grown, **and**
 - is a type called “non-squamous NSCLC”, **and**
 - your tumor does not have an abnormal “EGFR” or “ALK” gene.
 - **TECENTRIQ may be used with the medicines paclitaxel protein-bound and carboplatin as your first treatment when your lung cancer:**
 - has spread or grown, **and**
 - is a type called “non-squamous NSCLC”, **and**
 - your tumor does not have an abnormal “EGFR” or “ALK” gene.
 - **TECENTRIQ may also be used alone when your lung cancer:**
 - has spread or grown, **and**
 - you have tried chemotherapy that contains platinum, and it did not work or is no longer working.
 - if your tumor has an abnormal “EGFR” or “ALK” gene, you should have also tried an FDA-approved therapy for tumors with these abnormal genes, and it did not work or is no longer working.
- **a type of breast cancer called triple-negative breast cancer (TNBC).** TECENTRIQ may be used with the medicine paclitaxel protein-bound when your breast cancer:
 - has spread or cannot be removed by surgery, **and**
 - your cancer tests positive for “PD-L1”.

TECENTRIQ is not for use with the medicine paclitaxel (a different medicine than paclitaxel protein-bound) in TNBC when your breast cancer has spread or cannot be removed by surgery.
- **a type of lung cancer called small cell lung cancer (SCLC).** TECENTRIQ may be used with the chemotherapy medicines carboplatin and etoposide as your first treatment when your lung cancer
 - is a type called “extensive-stage SCLC,” which means that it has spread or grown.
- **a type of liver cancer called hepatocellular carcinoma (HCC).** TECENTRIQ may be used with the medicine bevacizumab when your liver cancer:
 - has spread or cannot be removed by surgery, **and**
 - you have not received other medicines by mouth or injection through your vein (IV) to treat your cancer.
- **a type of skin cancer called melanoma.** TECENTRIQ may be used with the medicines cobimetinib and vemurafenib when your melanoma:
 - has spread to other parts of the body or cannot be removed by surgery, **and**
 - has a certain type of abnormal “BRAF” gene. Your healthcare provider will perform a test to make sure this TECENTRIQ combination is right for you.

It is not known if TECENTRIQ is safe and effective in children.

Before receiving TECENTRIQ, tell your healthcare provider about all of your medical conditions, including if you:

- have immune system problems such as Crohn’s disease, ulcerative colitis, or lupus
- have received an organ transplant
- have received or plan to receive a stem cell transplant that uses donor stem cells (allogeneic)
- have received radiation treatment to your chest area
- have a condition that affects your nervous system, such as myasthenia gravis or Guillain-Barré syndrome
- are pregnant or plan to become pregnant. TECENTRIQ can harm your unborn baby. Tell your healthcare provider right away if you become pregnant or think you may be pregnant during treatment with TECENTRIQ.

Females who are able to become pregnant:

- Your healthcare provider should do a pregnancy test before you start treatment with TECENTRIQ.
- You should use an effective method of birth control during your treatment and for at least 5 months after the last dose of TECENTRIQ.
- are breastfeeding or plan to breastfeed. It is not known if TECENTRIQ passes into your breast milk. Do not breastfeed during treatment and for at least 5 months after the last dose of TECENTRIQ.

Tell your healthcare provider about all the medicines you take, including prescription and over-the-counter medicines, vitamins, and herbal supplements.

How will I receive TECENTRIQ?

- Your healthcare provider will give you TECENTRIQ into your vein through an intravenous (IV) line over 30 to 60 minutes.
- TECENTRIQ is usually given every 2, 3, or 4 weeks.
- Your healthcare provider will decide how many treatments you need.
- Your healthcare provider will test your blood to check you for certain side effects.
- For treatment of a type of skin cancer called melanoma, your healthcare provider will also prescribe you cobimetinib and vemurafenib. Take cobimetinib and vemurafenib exactly as your healthcare provider tells you.
- If you miss any appointments, call your healthcare provider as soon as possible to reschedule your appointment

What are the possible side effects of TECENTRIQ?

TECENTRIQ can cause serious side effects, including:

- See “What is the most important information I should know about TECENTRIQ?”

The most common side effects of TECENTRIQ when used alone include:

- feeling tired or weak
- nausea
- cough
- shortness of breath
- decreased appetite

The most common side effects of TECENTRIQ when used in lung cancer with other anti-cancer medicines include:

- feeling tired or weak
- nausea
- hair loss
- constipation
- diarrhea
- decreased appetite

The most common side effects of TECENTRIQ when used in triple-negative breast cancer with paclitaxel protein-bound include:

- decrease in hemoglobin (anemia)
- decreased white blood cells
- hair loss
- tingling or numbness in hands or feet
- feeling tired
- nausea
- diarrhea
- constipation
- cough
- headache
- vomiting
- decreased appetite

The most common side effects of TECENTRIQ when used in hepatocellular carcinoma with bevacizumab include:

- high blood pressure
- feeling tired or weak
- too much protein in the urine

The most common side effects of TECENTRIQ when used in melanoma with cobimetinib and vemurafenib include:

- skin rash
- joint, muscle, or bone pain
- feeling tired or weak
- liver injury
- fever
- nausea
- itching
- swelling of legs or arms
- mouth swelling (sometimes with sores)
- low thyroid hormone levels
- sunburn or sun sensitivity

TECENTRIQ may cause fertility problems in females, which may affect the ability to have children. Talk to your healthcare provider if you have concerns about fertility.

These are not all the possible side effects of TECENTRIQ.

Call your doctor for medical advice about side effects. You may report side effects to FDA at 1-800-FDA-1088.

General information about the safe and effective use of TECENTRIQ.

Medicines are sometimes prescribed for purposes other than those listed in a Medication Guide. You can ask your pharmacist or healthcare provider for information about TECENTRIQ that is written for health professionals.

What are the ingredients in TECENTRIQ?

Active ingredient: atezolizumab

Inactive ingredients: glacial acetic acid, L-histidine, polysorbate 20 and sucrose

Manufactured by: **Genentech, Inc.**, A Member of the Roche Group, 1 DNA Way, South San Francisco, CA 94080-4990 USA

U.S. License No. 1048 TECENTRIQ is a registered trademark of Genentech, Inc.

For more information, call 1-844-832-3687 or go to www.TECENTRIQ.com.

This Medication Guide has been approved by the U.S. Food and Drug Administration.

Revised: 12/2020